



South Hills, Mon Valley and Allegheny County: How is our Health! (District 6 and 9)

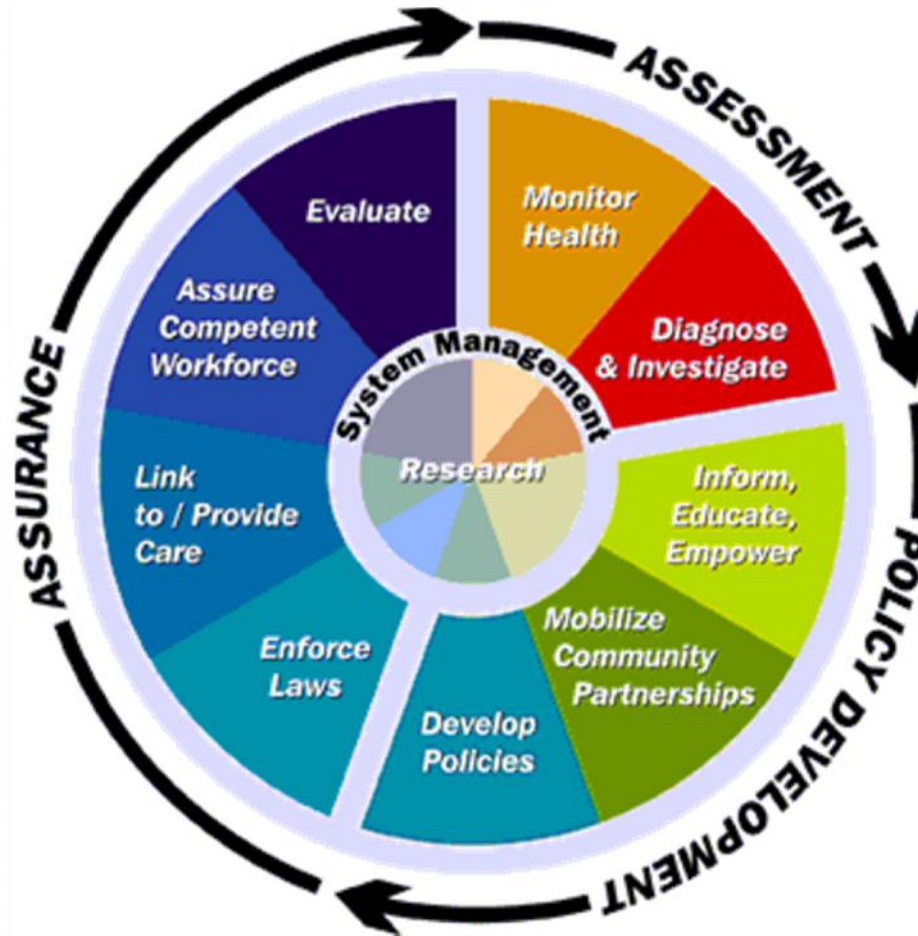
Karen Hacker, MD MPH
Director

Allegheny County Health Department





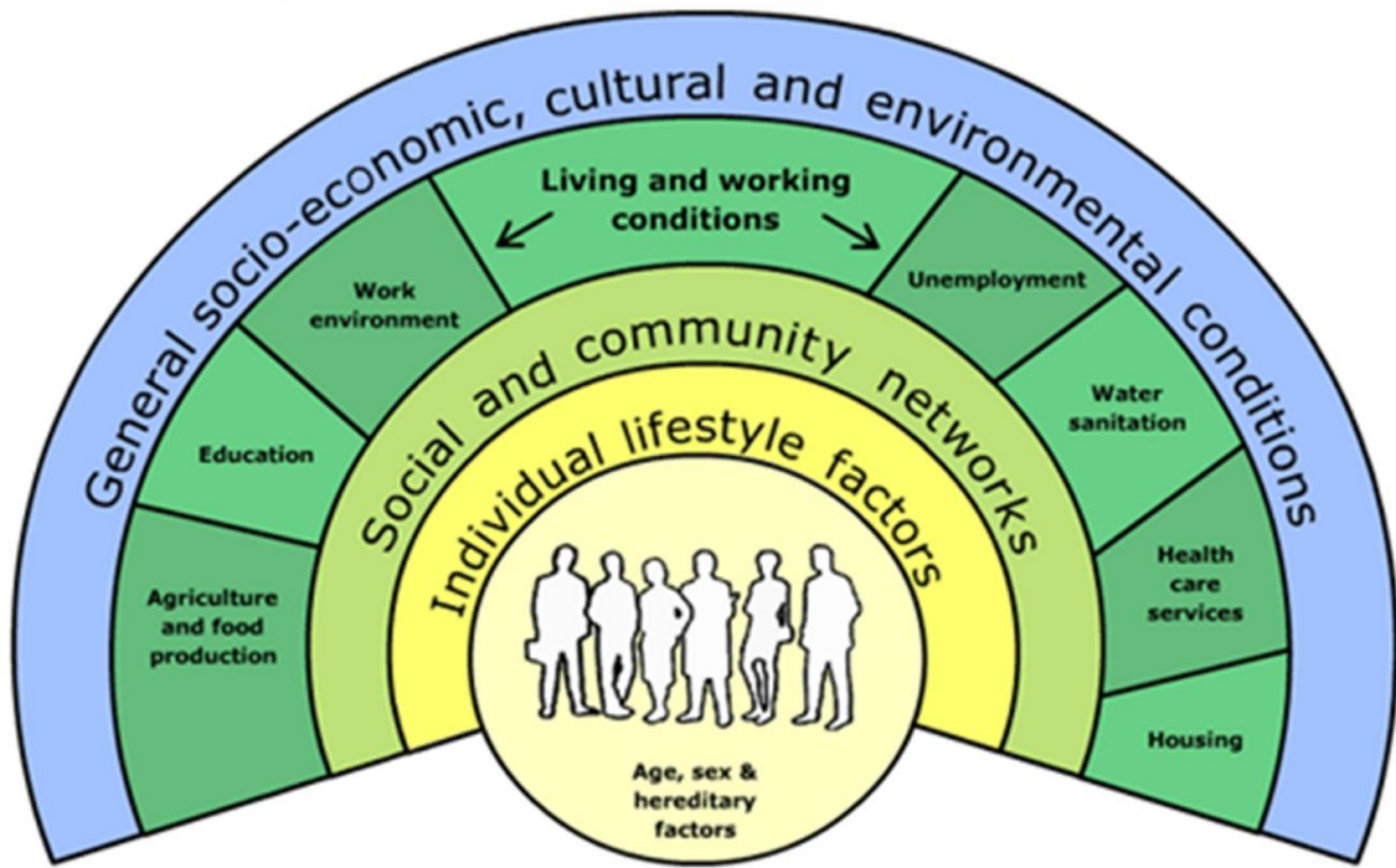
Public Health Core Functions



Source: Public Health Functions Project (1994)/
The Future of Public Health (IOM, 1988)



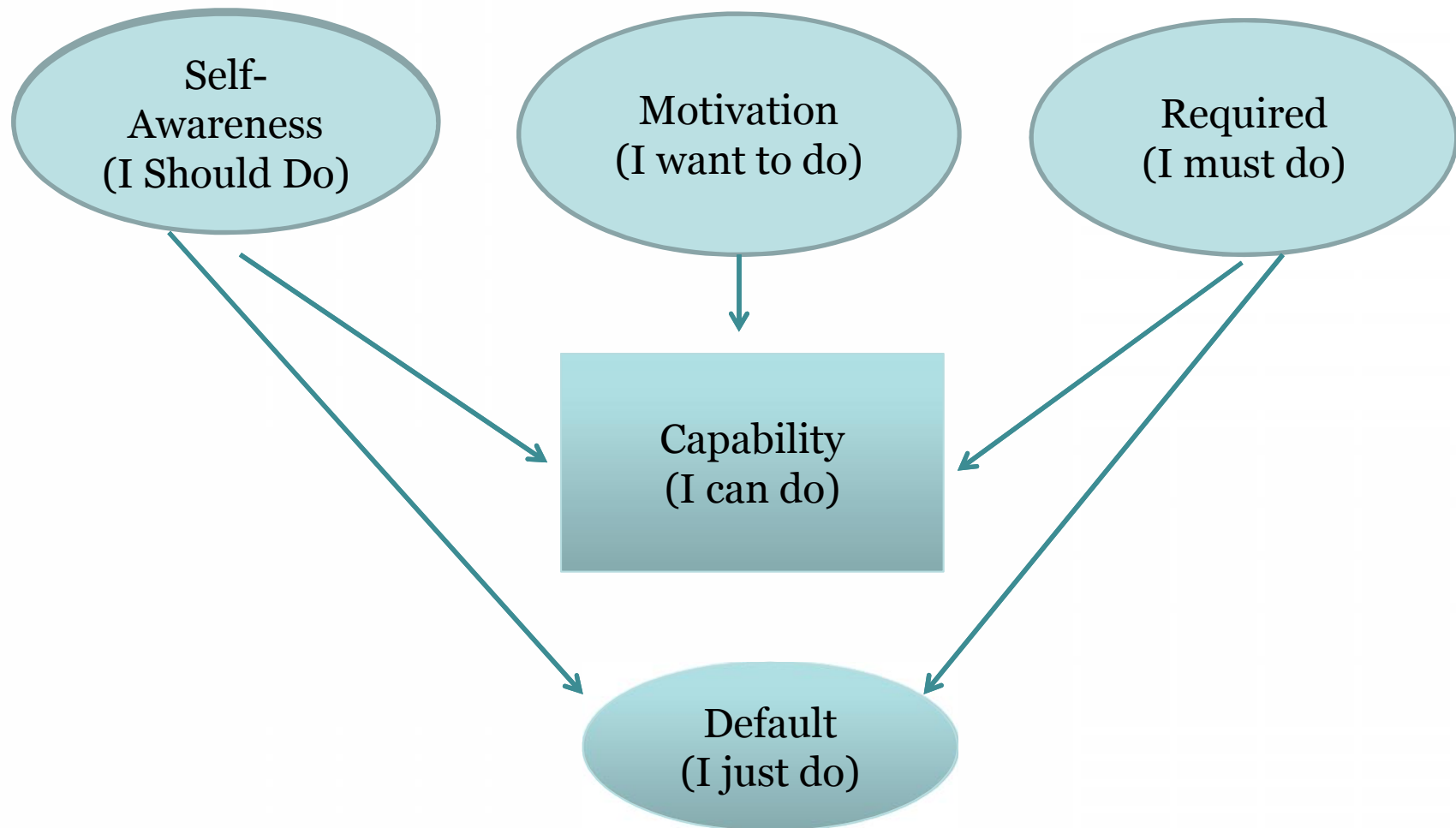
Social Determinants of Health



Source: Dahlgren & Whitehead 1991 Policies and strategies to promote social equity in health.



Making Healthy Choices Default Choices



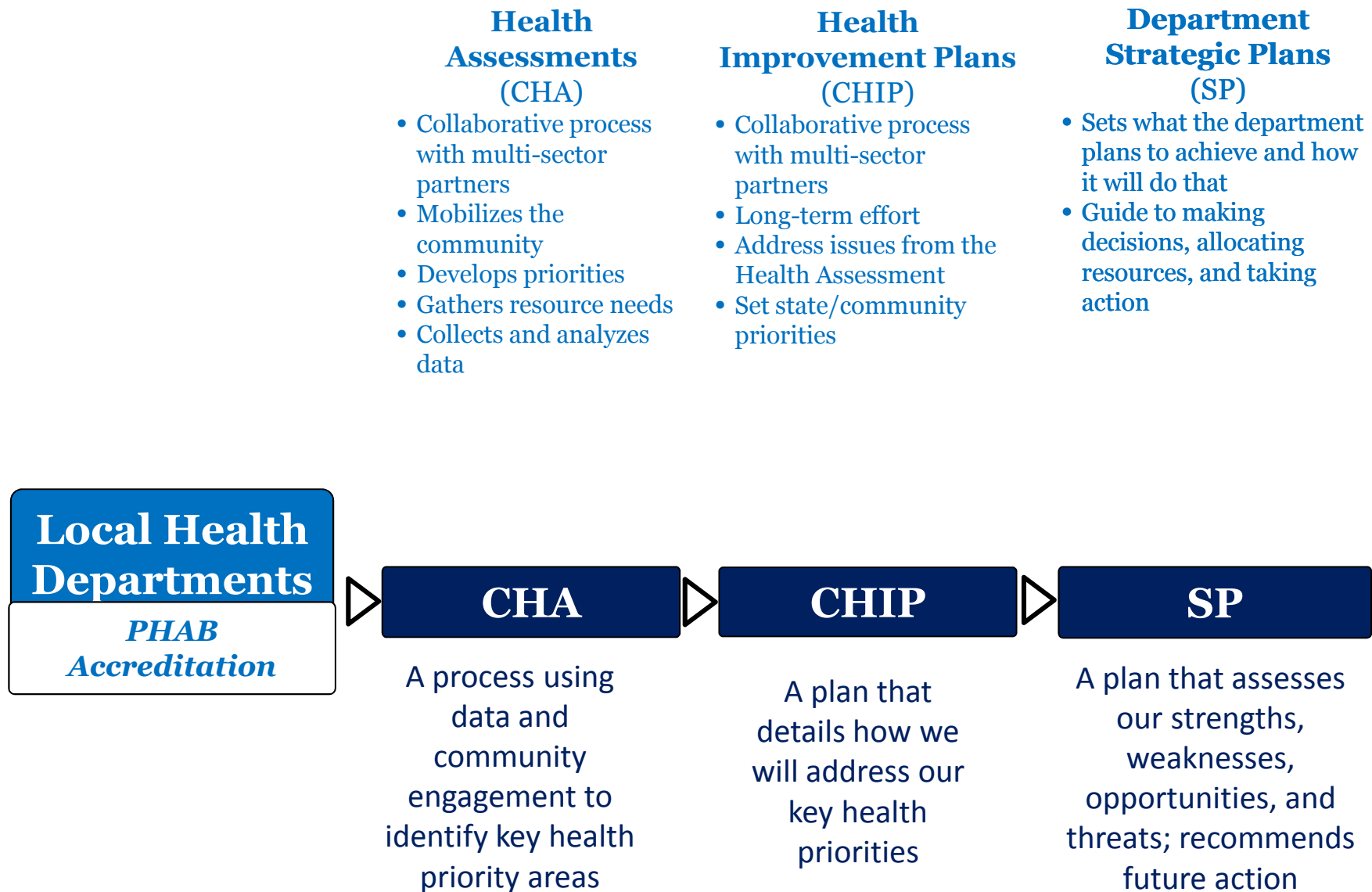


Public Health Accreditation

Goal

The goal of the national public health department accreditation program is to improve and protect the health of the public by advancing the quality and performance of state, local, tribal and territorial public health departments.

Local Health Department Planning Processes





Data Collection and Planning Process

Identify Potential Health Indicators

- Use survey to select health indicators for assessment
- Engage consultants

Convene Advisory Council

- Garner feedback from stakeholders in nonprofit, corporate, and government sectors

Data

- Collect data
- Produce report
- PowerPoint for presentations

Community Meetings

- 14 community meetings within county council districts
- Elicit feedback from public for health prioritization

Advisory Council Prioritization Process

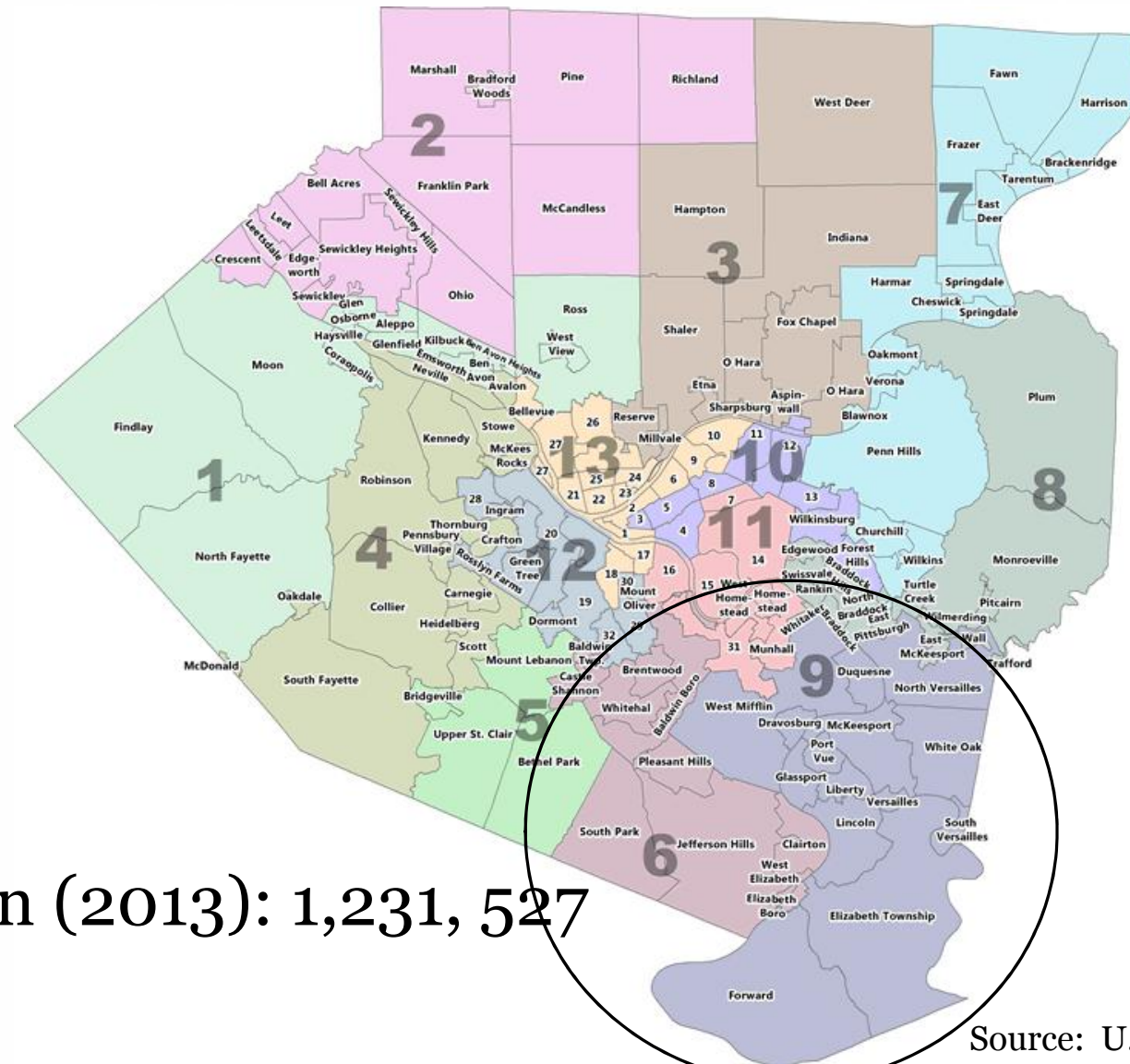
- Review data
- Prioritize health issues

CHIP Planning

- Priority groups meet
- Planning
- Commitment



Allegheny County



Population (2013): 1,231, 527

Source: U.S. Census Bureau



Online Health Indicator Survey



Health indicator rankings identified by Allegheny County residents

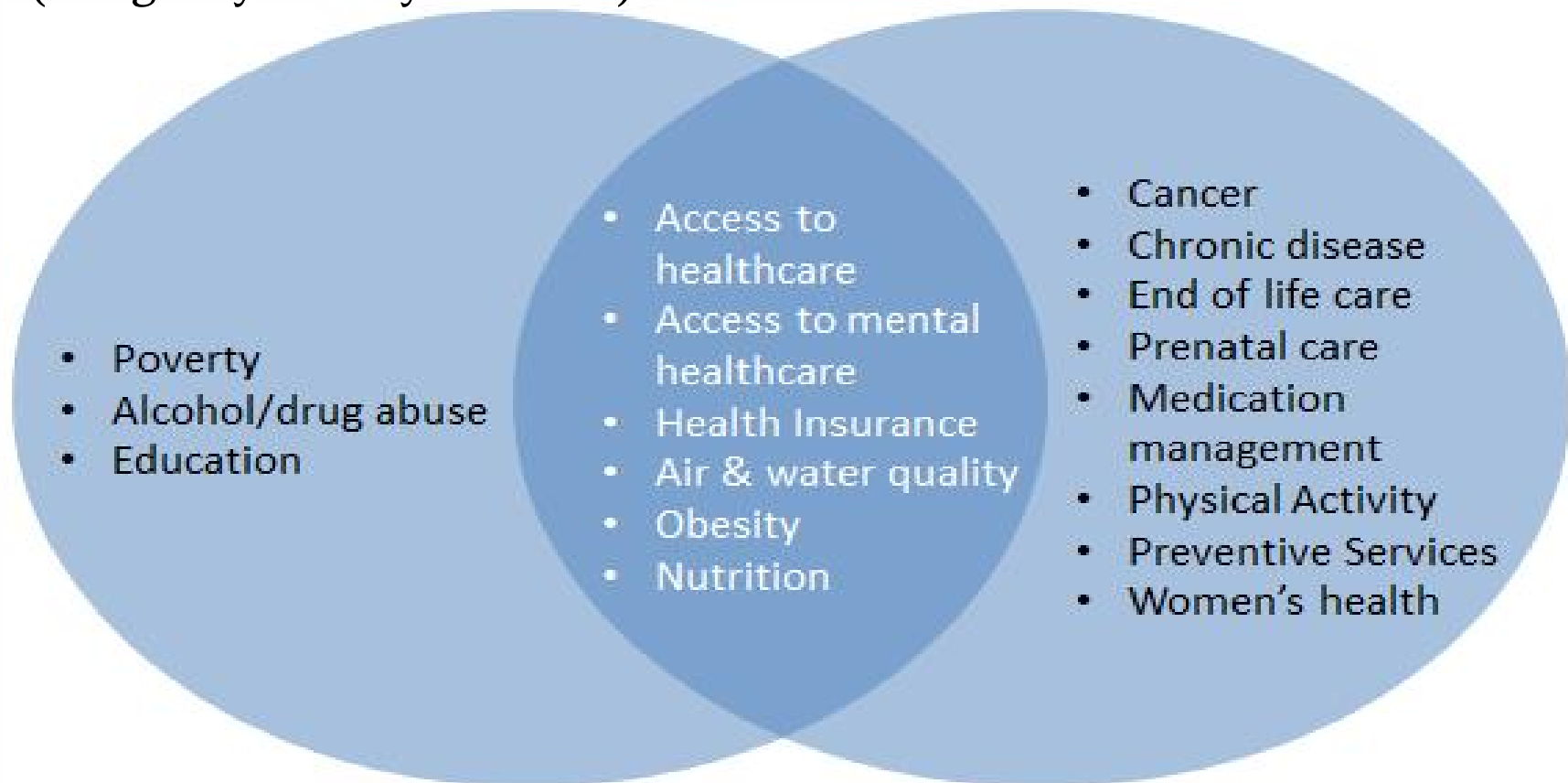
Ranking	Health Indicator
1	Air pollution
2	Access to mental health providers
3	Access to health care providers
4	Poverty
5	Abuse of alcohol or drugs
6	Education
7	Obesity
8	Availability of healthy food
9	Health insurance
10	River water / recreational water quality
11	Unemployment
12	Cancer
13	Smoking
14	Homelessness
15	Violent crime rates
16	Physical inactivity
17	Food safety
18	Diabetes
19	Antibiotic resistance
20	Childhood immunizations
21	Regular preventive care/ physical exams
22	Asthma



Community Health Concerns

Health Indicators Survey
(Allegheny County residents)

Community Needs Health Assessment
(Not-for-profit hospitals)



Sources: Allegheny County Health Department Health Indicator Survey, 2014
Non-Profit Hospital Community Needs Health Assessment



Review of ACHD Data

Criteria Used:

- Worse than statewide or national rates
- Worsening or unimproved rates
- Represents health inequalities or significantly contributes to premature mortality



Health Rankings

In 2014, Pennsylvania was ranked 28th for overall health among the 50 United States.

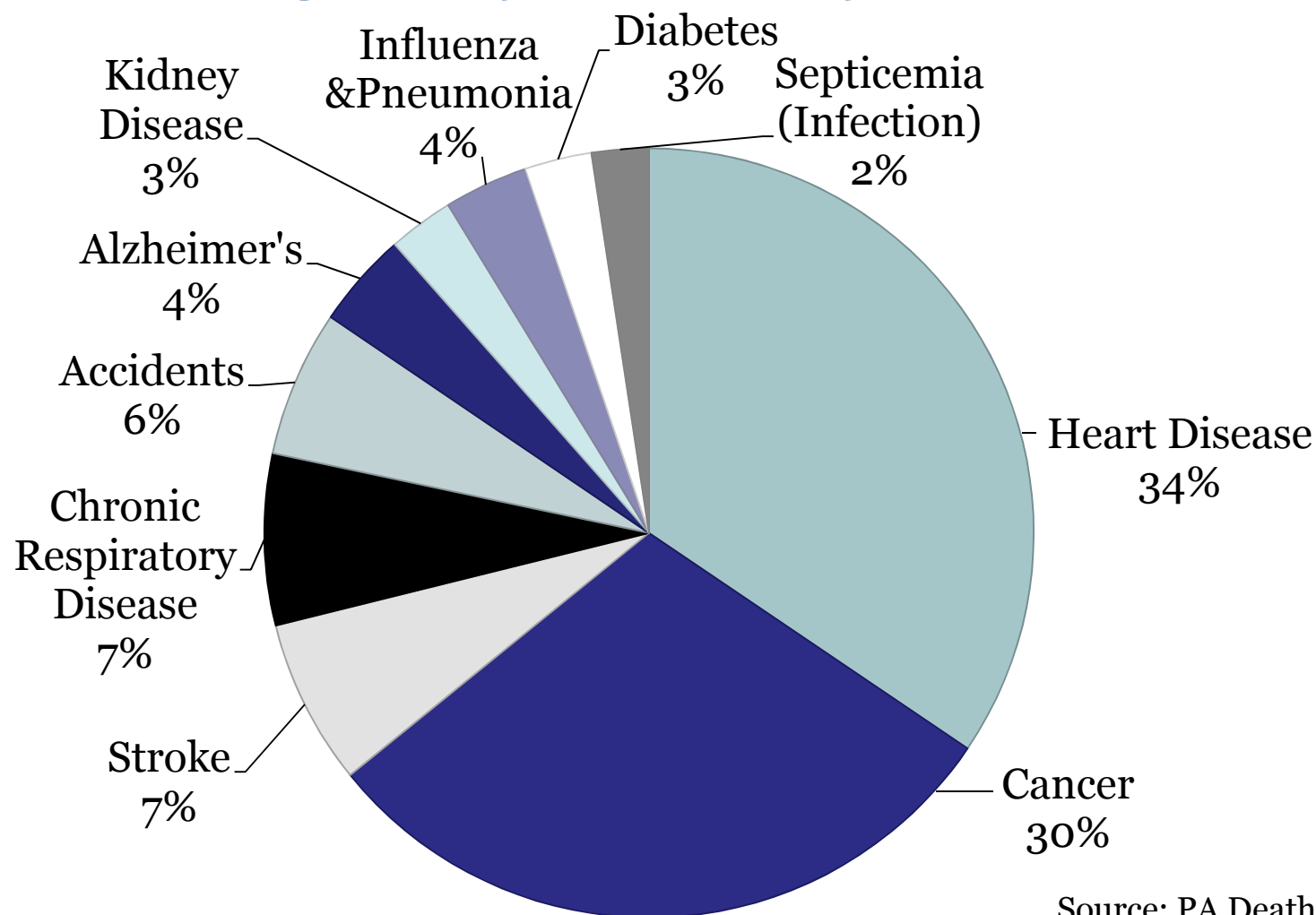
In 2014, Allegheny County is ranked 34th for overall health among the 67 counties in Pennsylvania.

For specific health indicators we are ranked:

- 33rd for length of life
- 34th for quality of life
- 18th for health behaviors
- 26th for clinical care
- 19th for social and economic factors
- 54th for physical environment



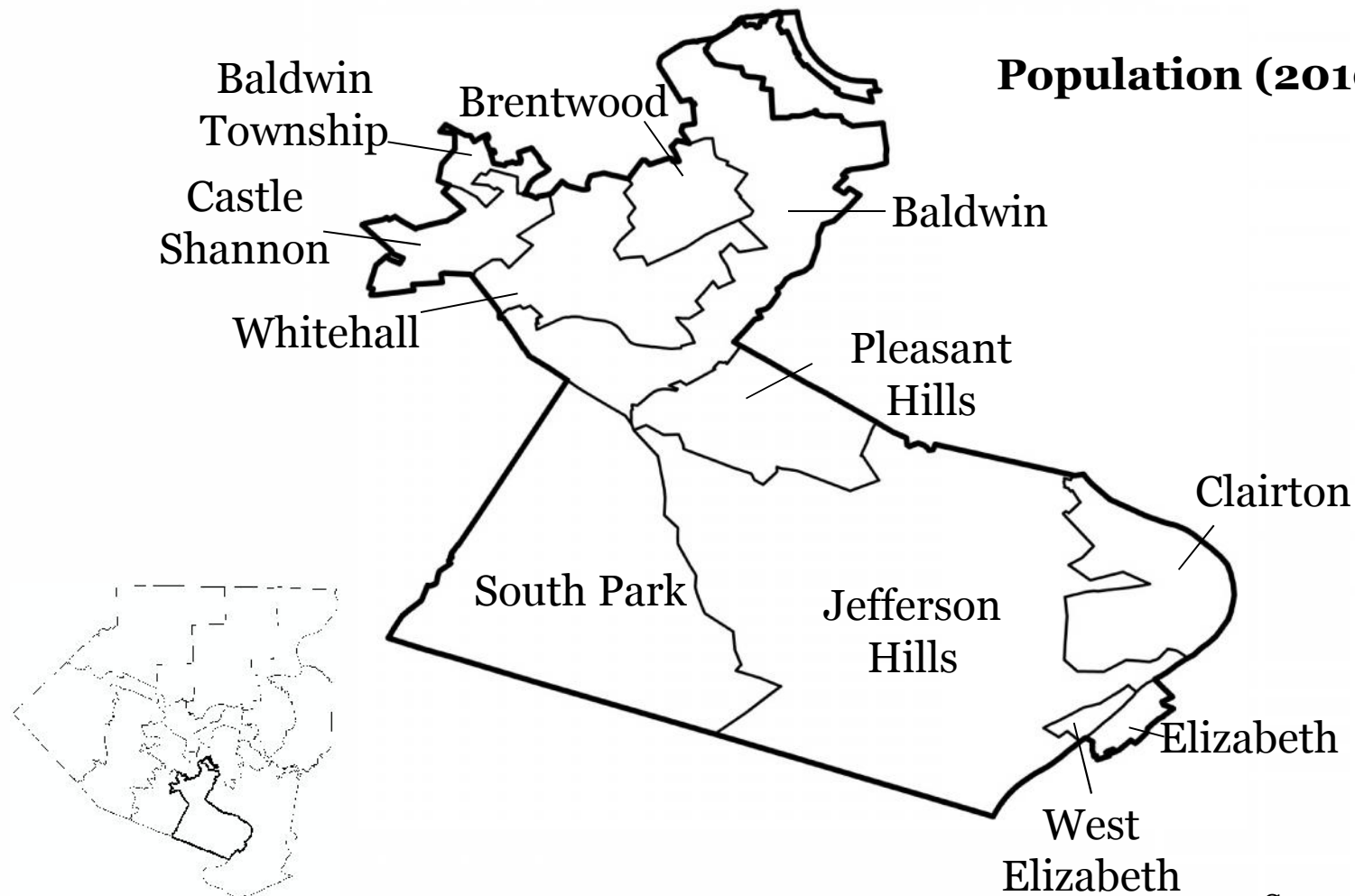
Leading Causes of Death in Allegheny County, 2011



Source: PA Death Certificates



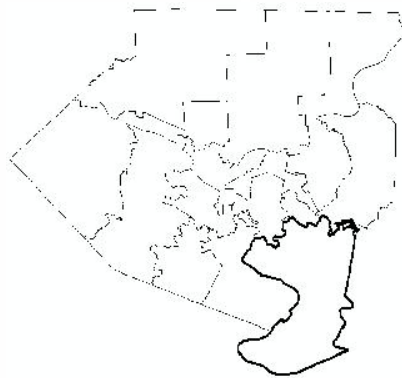
District 6



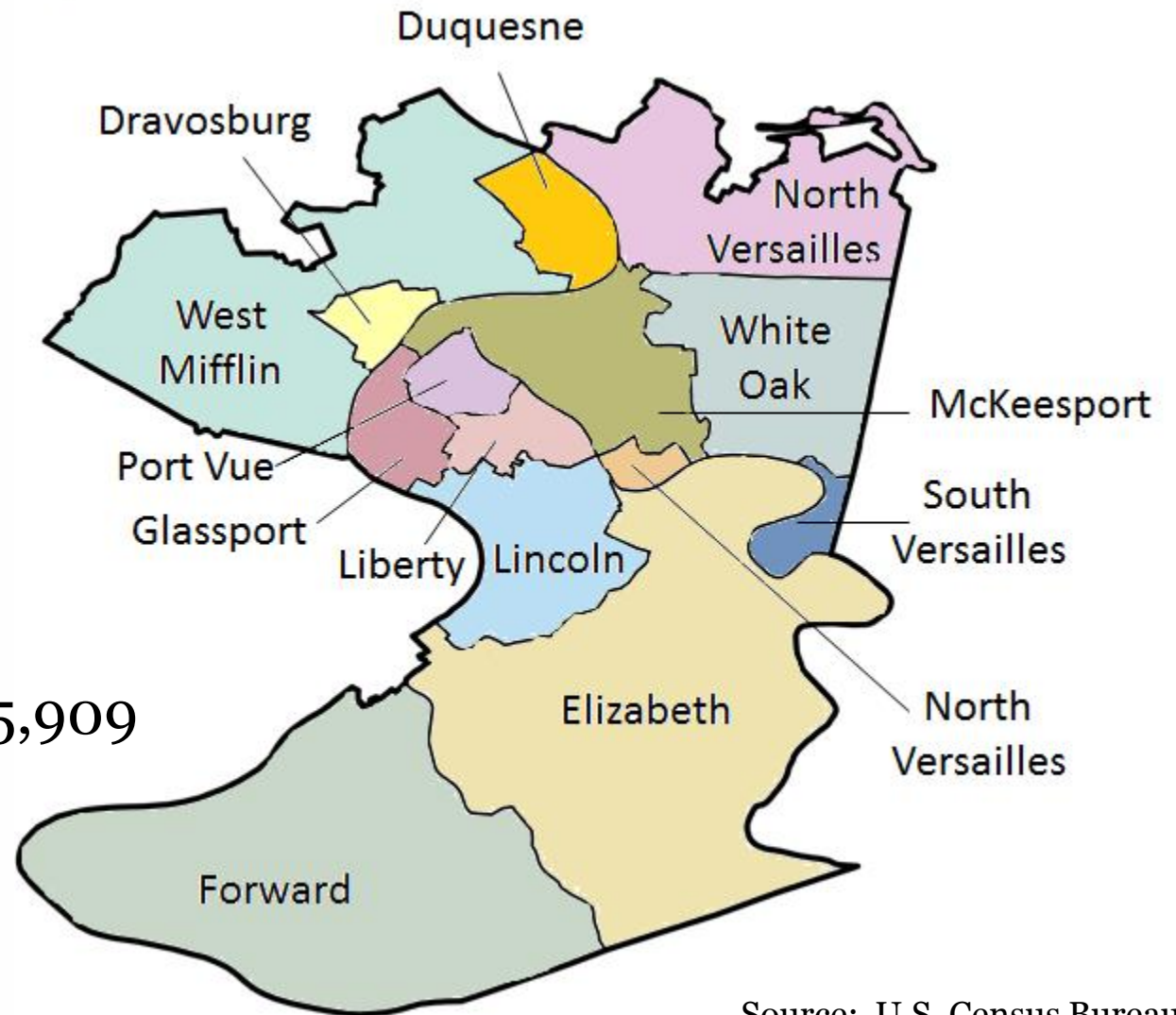
Source: U.S. Census Bureau



District 9



Population (2013): 95,909



Source: U.S. Census Bureau



Allegheny County Age-Adjusted Death Rate for All Causes by District, 2007-2011

	Number of Deaths	Rate per 100,000 Residents
Allegheny County	68,153	787.6
District 1	4,658	705.4
District 2	3,564	634.1
District 3	4,832	690.7
District 4	5,758	781.1
District 5	4,880	638.2
District 6	5,581	752.9
District 7	6,329	885.1
District 8	5,438	764.9
District 9	6,814	902.9
District 10	4,982	932.3
District 11	4,695	792.3
District 12	5,577	910.1
District 13	4,955	988.5

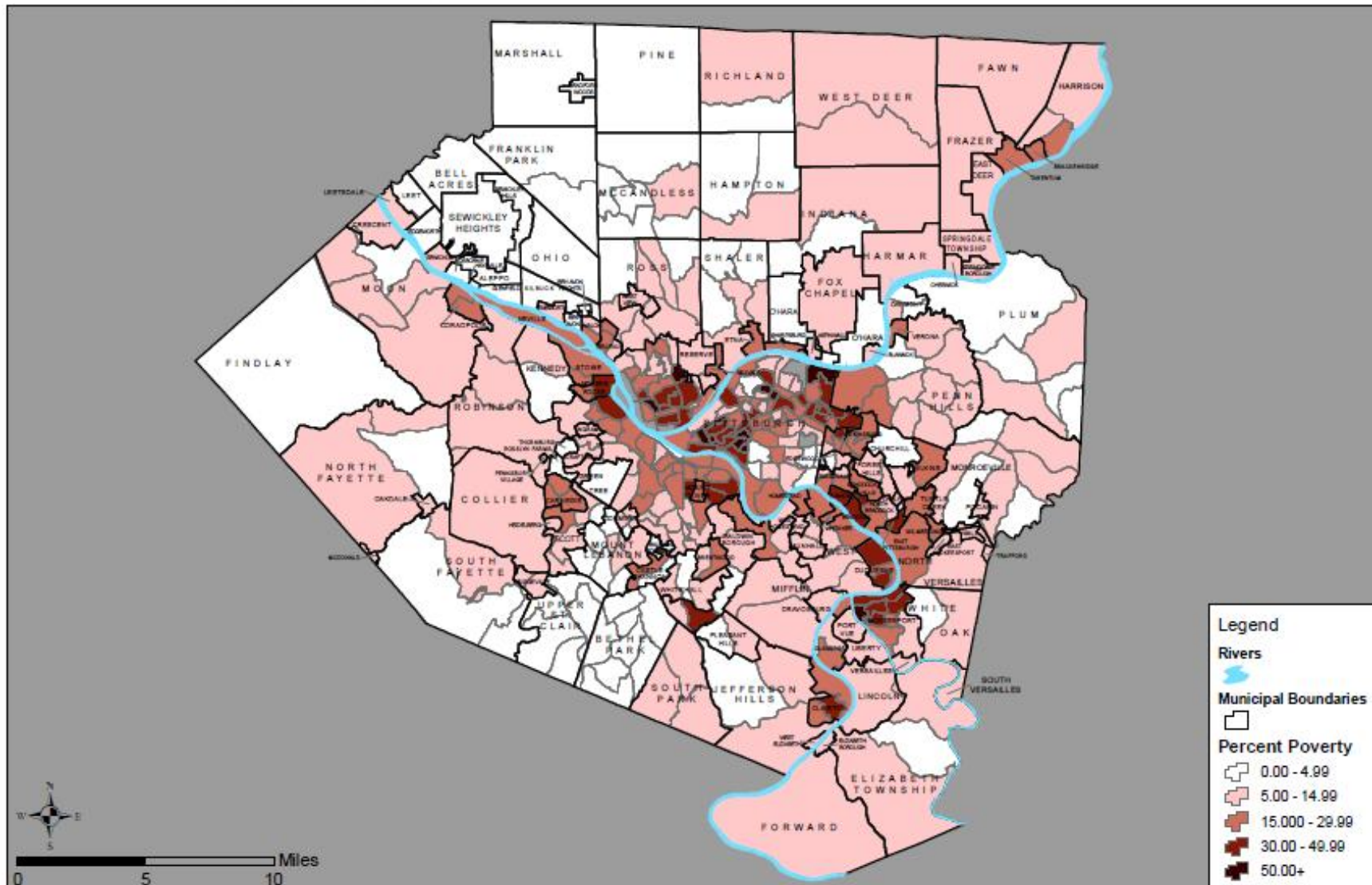
Source: Pennsylvania Death Certificates



Allegheny County Median Age of Death by District, 2011

	Total Number of Deaths	White	Black
Allegheny County	13,690	77.9	66.9
District 1	985	77.8	77.1
District 2	775	79.0	78.0
District 3	1,015	77.8	57.5
District 4	1,156	77.5	60.0
District 5	973	85.1	75.0
District 6	1,162	78.1	66.0
District 7	1,241	78.2	67.5
District 8	1,077	78.0	65.3
District 9	1,352	77.2	66.0
District 10	910	78.5	75.1
District 11	949	77.8	68.2
District 12	1,108	76.6	57.8
District 13	968	76.5	65.8

Source: Pennsylvania Death Certificates

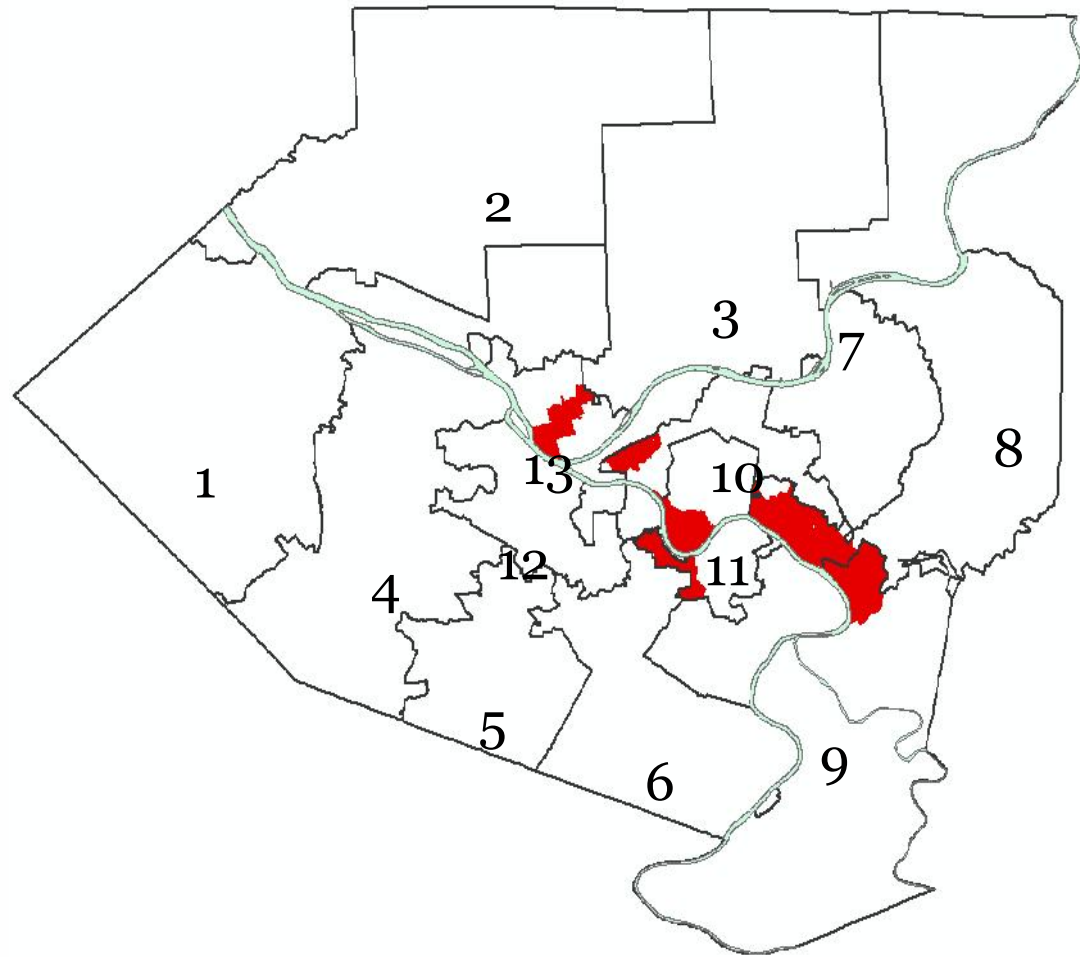




Access to Primary Care in Allegheny County

Primary Care Provider Shortage Areas, 2010

- 11% of adults reported having to forgo health care due to cost within the prior year
- 11% of adults ages 18-64 reported no health insurance
- 29% of adults had not completed a routine checkup in the past year



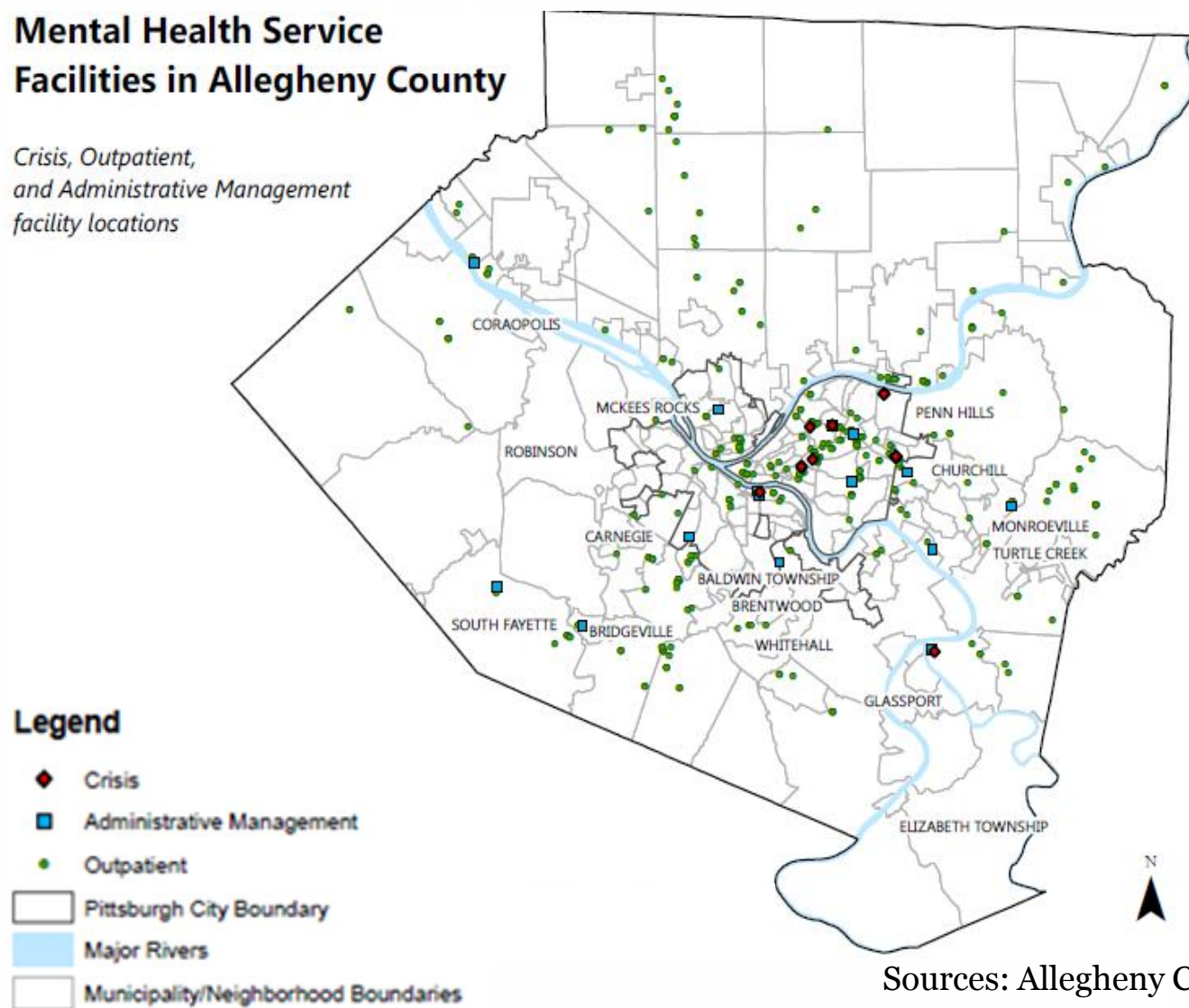
Sources: US Department of Health and Human Services Health Resources and Services Administration
Allegheny County Health Survey, 2009-2010



Access to Mental Health Care in Allegheny County

Mental Health Service Facilities in Allegheny County

Crisis, Outpatient, and Administrative Management facility locations



18.2% of Allegheny County residents reported being diagnosed with a form of depression.

- PA: 18.0%
- US: 17.6%

Sources: Allegheny County Health Survey, 2009-2010
Department of Human Services



Tobacco Smoking in Allegheny County

Smoking Status	Allegheny County ¹	Pennsylvania ²	United States ³
Current Smoker	23%	21.4%	19.2%
Former Smoker	32.5%	25.5%	25.0%
Smoked During Pregnancy	18.2% ²	15.1%	12.3%

Source: ¹ Allegheny County Health Survey, 2009-2010

² Allegheny County Community Profile Report , 2010

³CDC Behavioral Risk Factor Surveillance System, 2012



Cancer Rates in Allegheny County

The incidence of cancer in Allegheny County between 2006 and 2010 was 505.9 per 100,000

- PA: 494.5 per 100,000
- US: 453.7 per 100,000

Cancer Rates per 100,000, 2006-2010

Cancer Type	Allegheny County	Pennsylvania	United States
Breast	133.8	126.0	119.8
Prostate	142.2	149.5	143.8
Lung	77.0	68.9	65.0
Colon/Rectum	47.3	48.6	43.9
Skin	15.2	18.8	19.0
Bladder	25.8	24.9	20.6

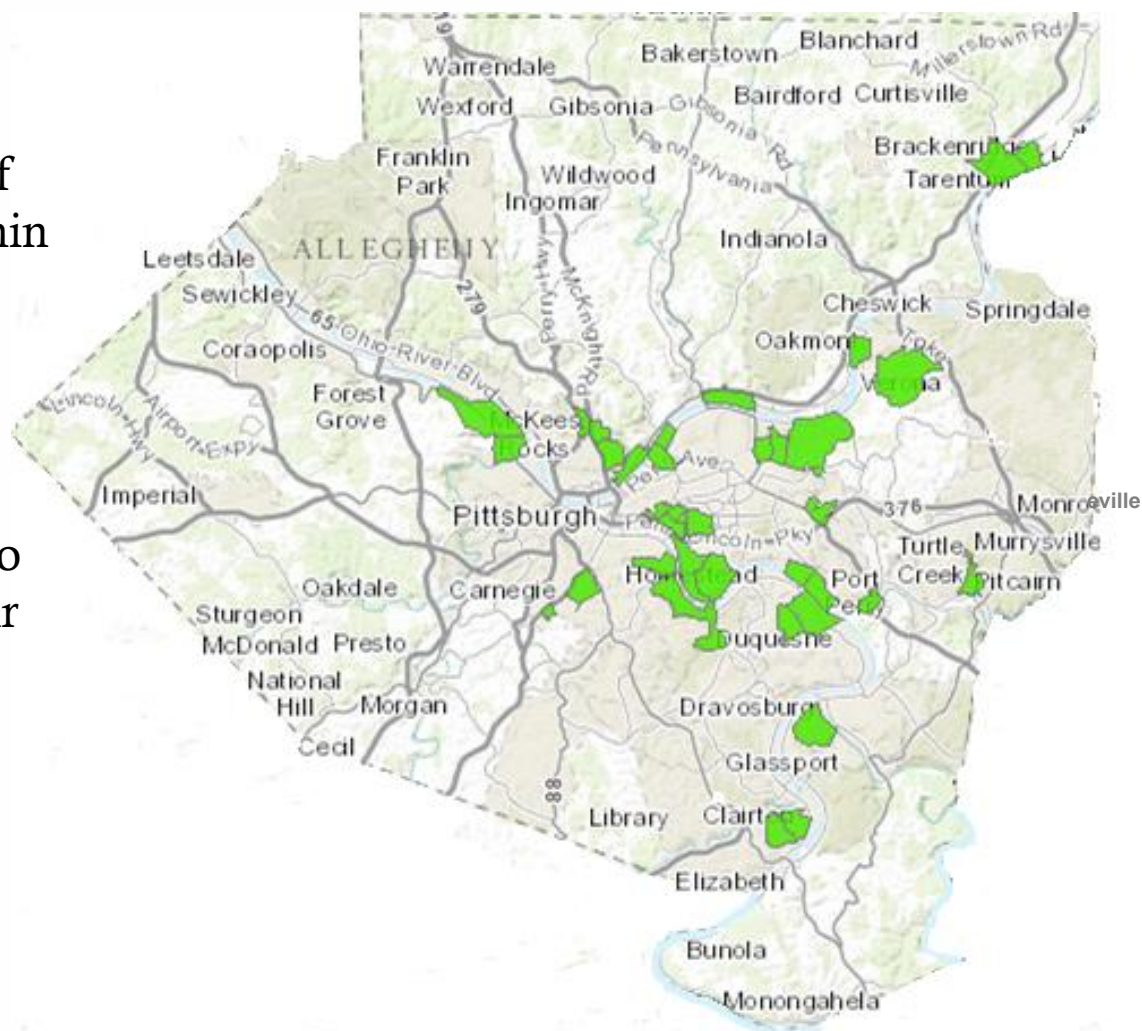
Source: National Cancer Institute, 2006-2010



Food Deserts in Allegheny County

37% of residents don't believe that there is a large selection of fresh fruits and vegetables within their neighborhood.

57% of residents reported that there are many opportunities to purchase fast foods within their neighborhood.



Sources: Allegheny County Health Survey, 2009-2010
United States Department of Agriculture Economic Research Service

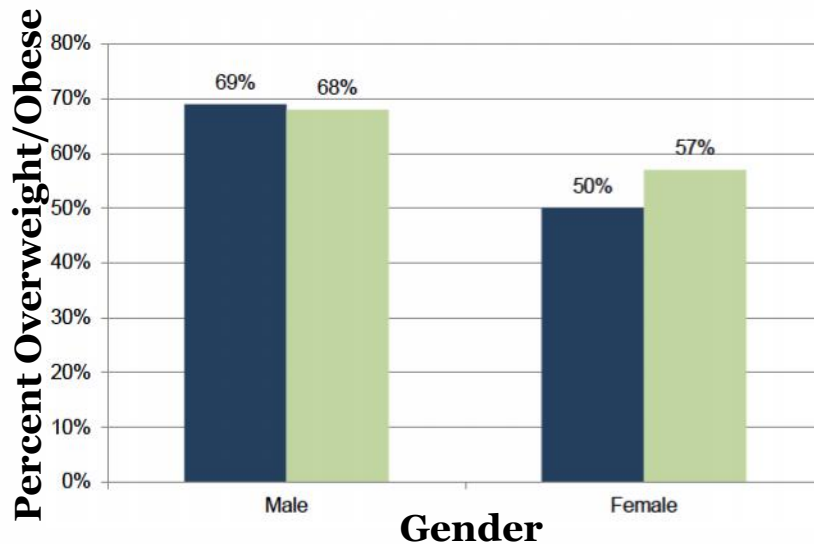


Obesity in Allegheny County

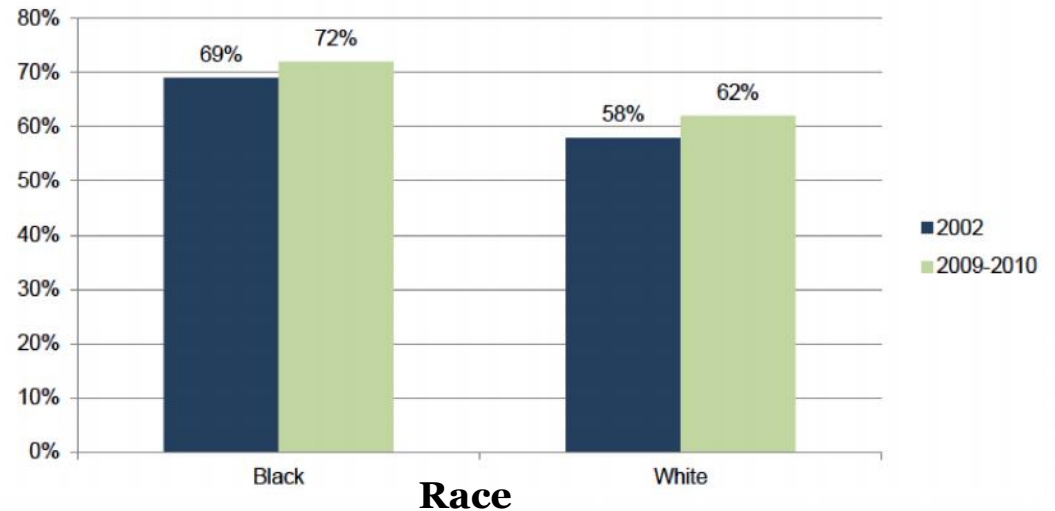
In 2009-2010, 62% of Allegheny County adult residents were overweight or obese in 2012

- Statewide: 65%
- Nationwide: 63.9%

Percentage of Overweight/Obesity According to Gender, 2002 & 2010



Percentage of Overweight/Obesity According to Race, 2002 & 2010



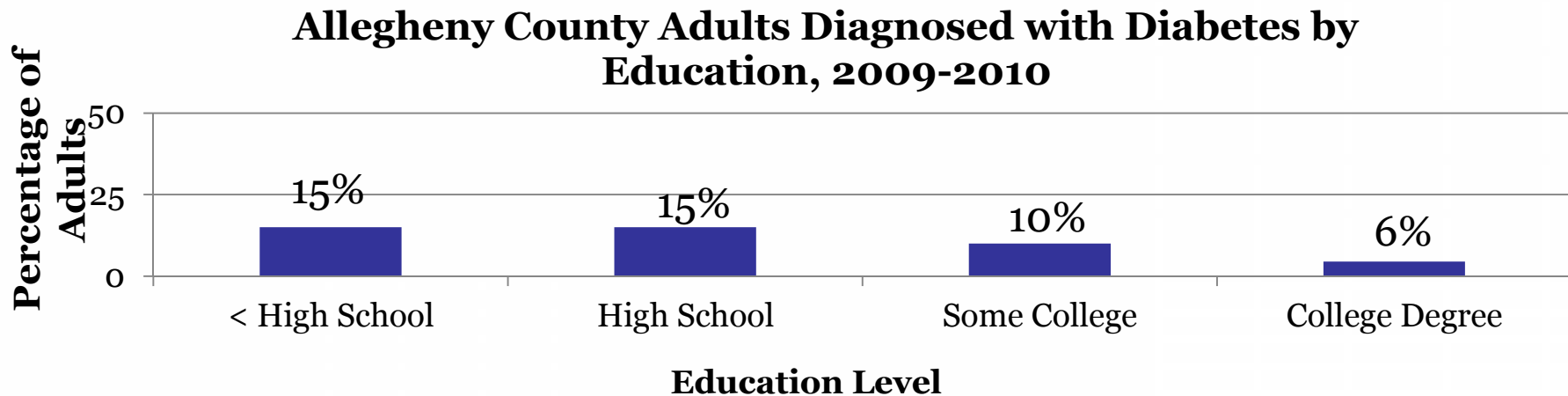
Sources: Allegheny County Health Survey, 2009-2010
CDC Behavioral Risk Factor Surveillance System, 2012



Diabetes in Allegheny County

11% of Allegheny County residents reported being diagnosed with diabetes in 2012.

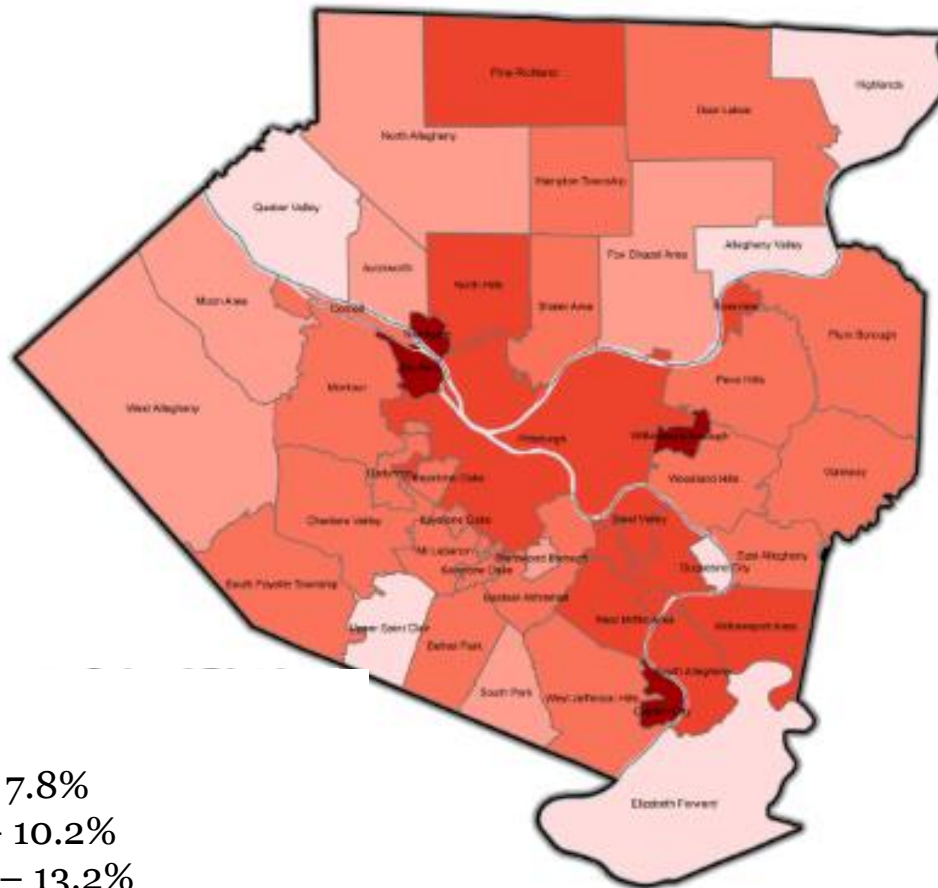
- PA: 10.2%
- US: 9.7%



Sources: Allegheny County Health Survey, 2009-2010
CDC Behavioral Risk Factor Surveillance System, 2012

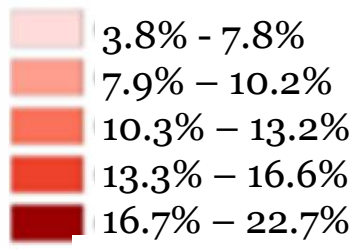


Percent of Allegheny County Children Diagnosed with Asthma by School District, 2011-2012



During the
2008-2009
School Year:

PA: 11.3 %
AC: 12.1%



2.5 5 10 Miles



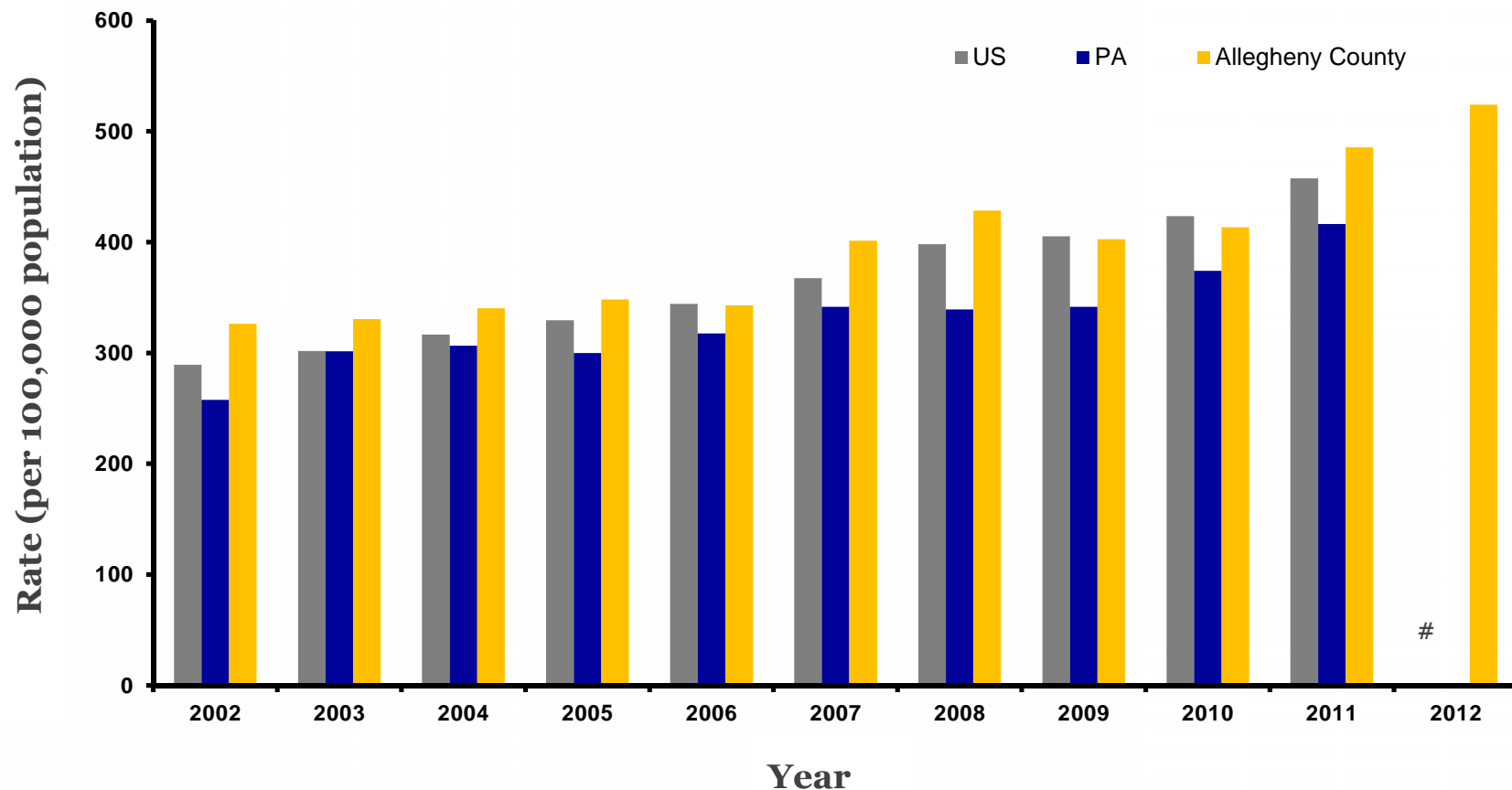
Allegheny County Health Department
September 10, 2014

Source: Allegheny County School Districts



Allegheny County Chlamydia Rates

Rates of New Chlamydia Cases in US, PA, and Allegheny County, 2002-2012.



* Incidence rate per 100,000 population

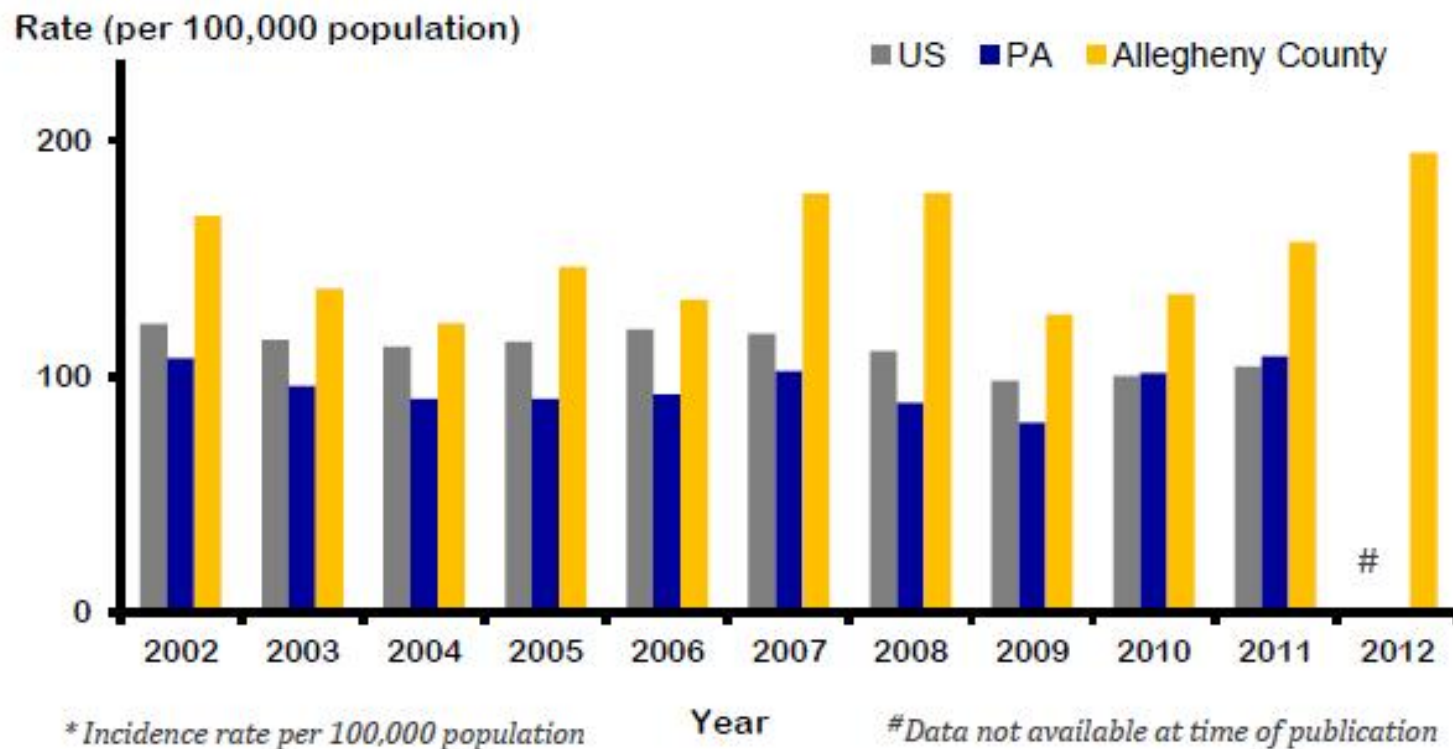
Data not available at time of publication

Source: Allegheny County Health Department Annual STD Report, 2012



Allegheny County Gonorrhea Rates

Rates of New Gonorrhea Cases in US, PA, and Allegheny County, 2002-2012.

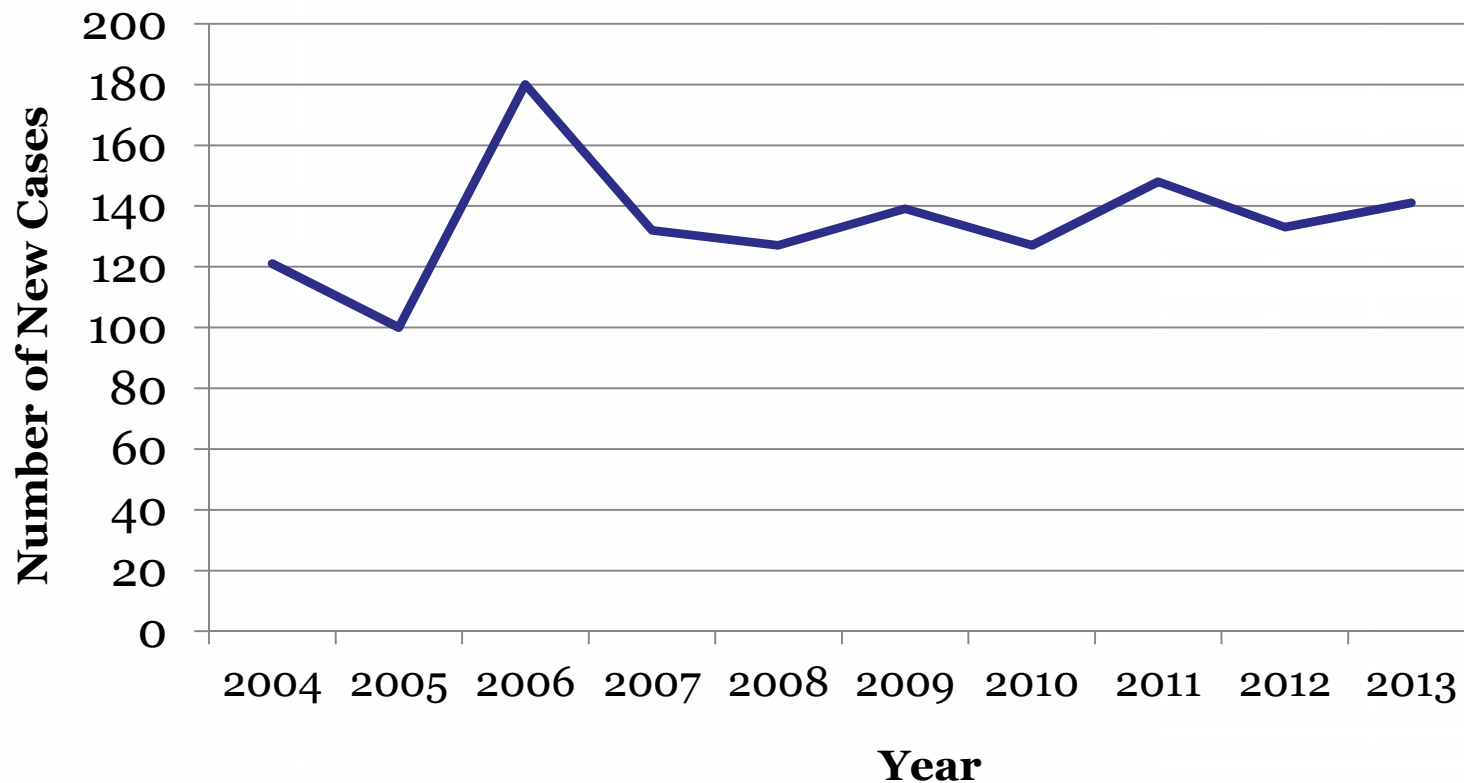


Source: Allegheny County Health Department Annual STD Report, 2012



HIV/AIDS in Allegheny County

Number of New HIV Cases in Allegheny County, 2002-2013

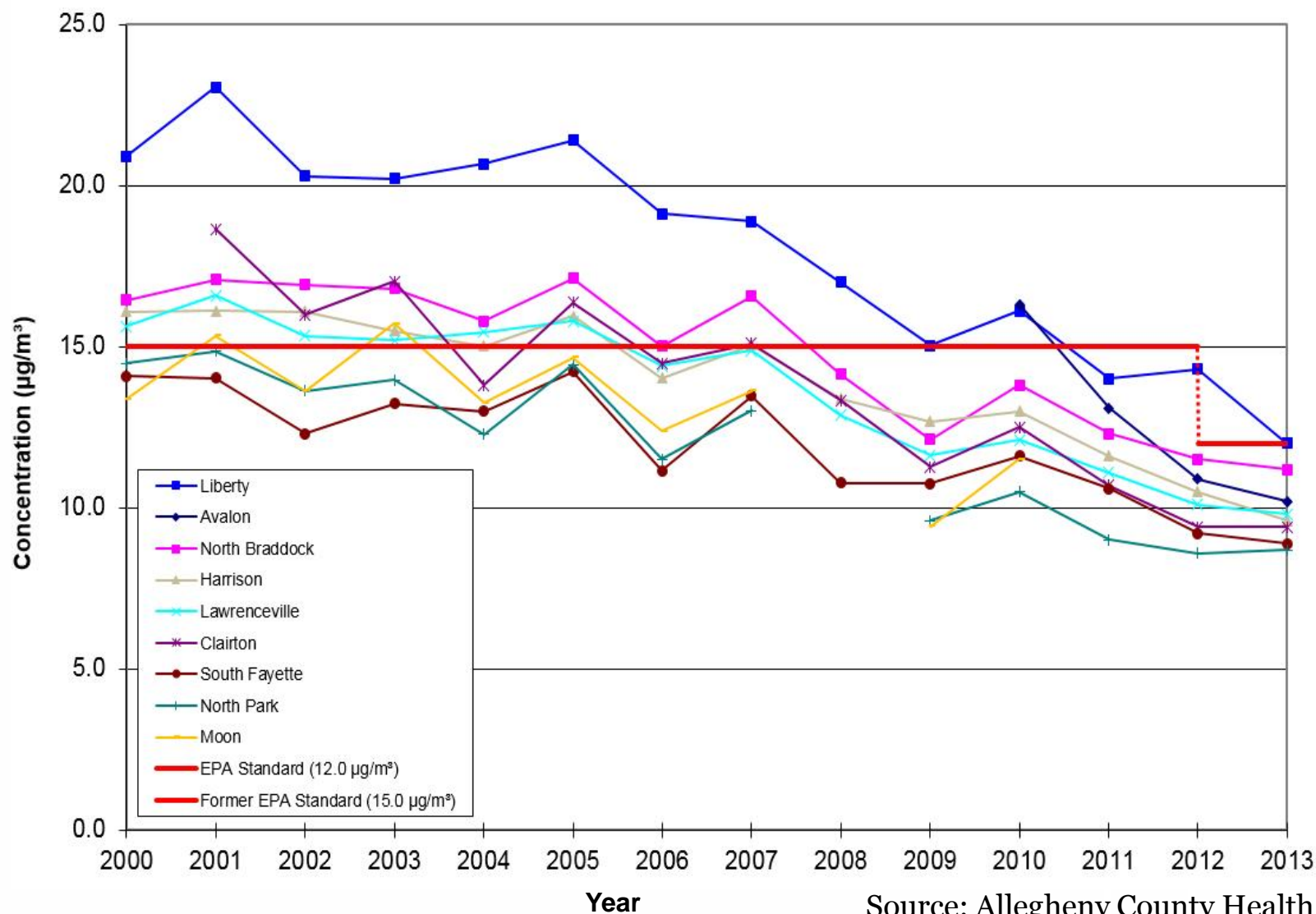


Source: Allegheny County Health Department



Allegheny County Air Quality

PM_{2.5} Annual Averages by Year, 2000 to 2013



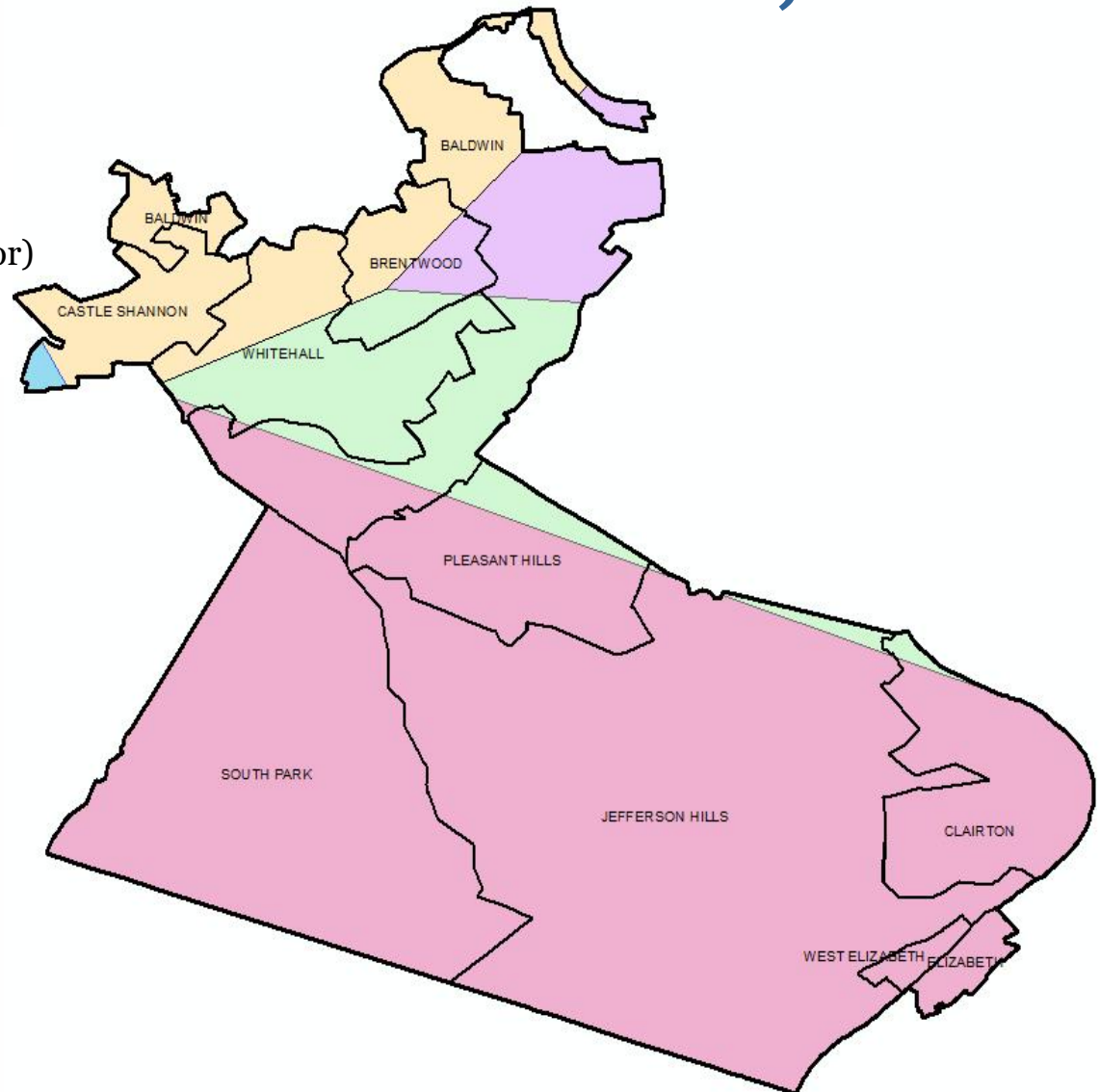
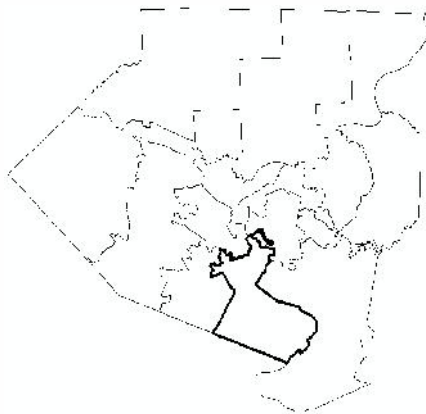
Source: Allegheny County Health Department



District 6 Particulate Matter Levels, 2013

- 8.9 $\mu\text{g}/\text{m}^3$ (South Fayette monitor)
- 9.8 $\mu\text{g}/\text{m}^3$ (Lawrenceville monitor)
- 11.2 $\mu\text{g}/\text{m}^3$ (North Braddock monitor)
- 12.0 $\mu\text{g}/\text{m}^3$ (Liberty monitor)
- 9.4 $\mu\text{g}/\text{m}^3$ (Clairton monitor)

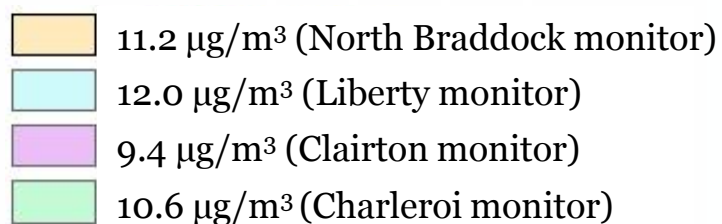
Weighted Annual Arithmetic Mean (2013)



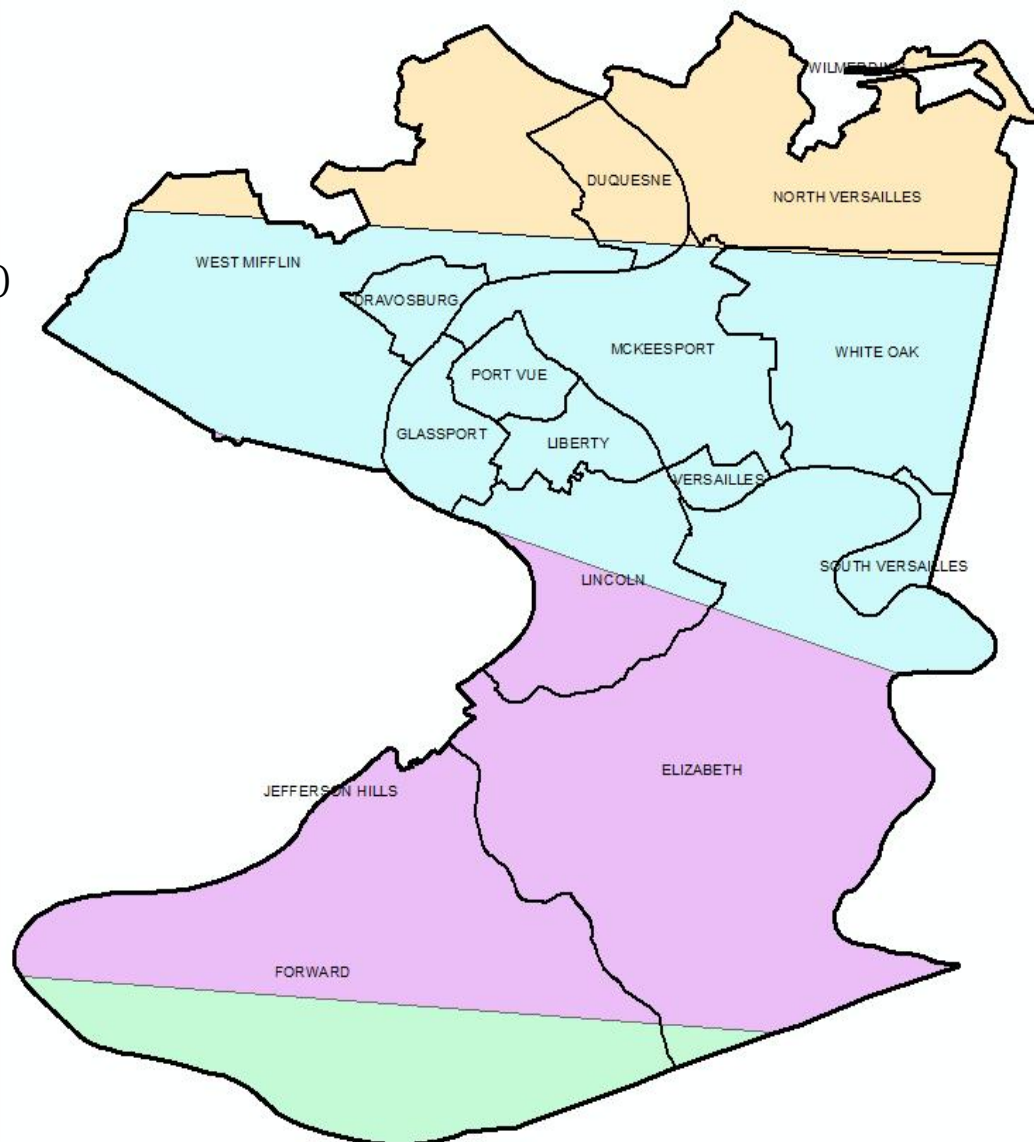
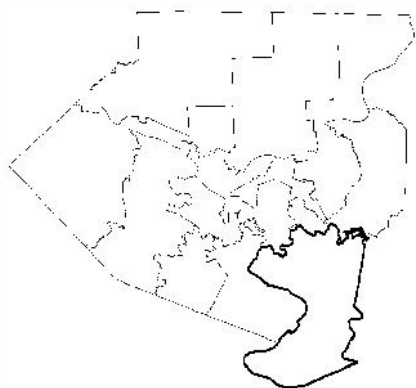
Source: Allegheny County Health Department



District 9 Particulate Matter Levels, 2013



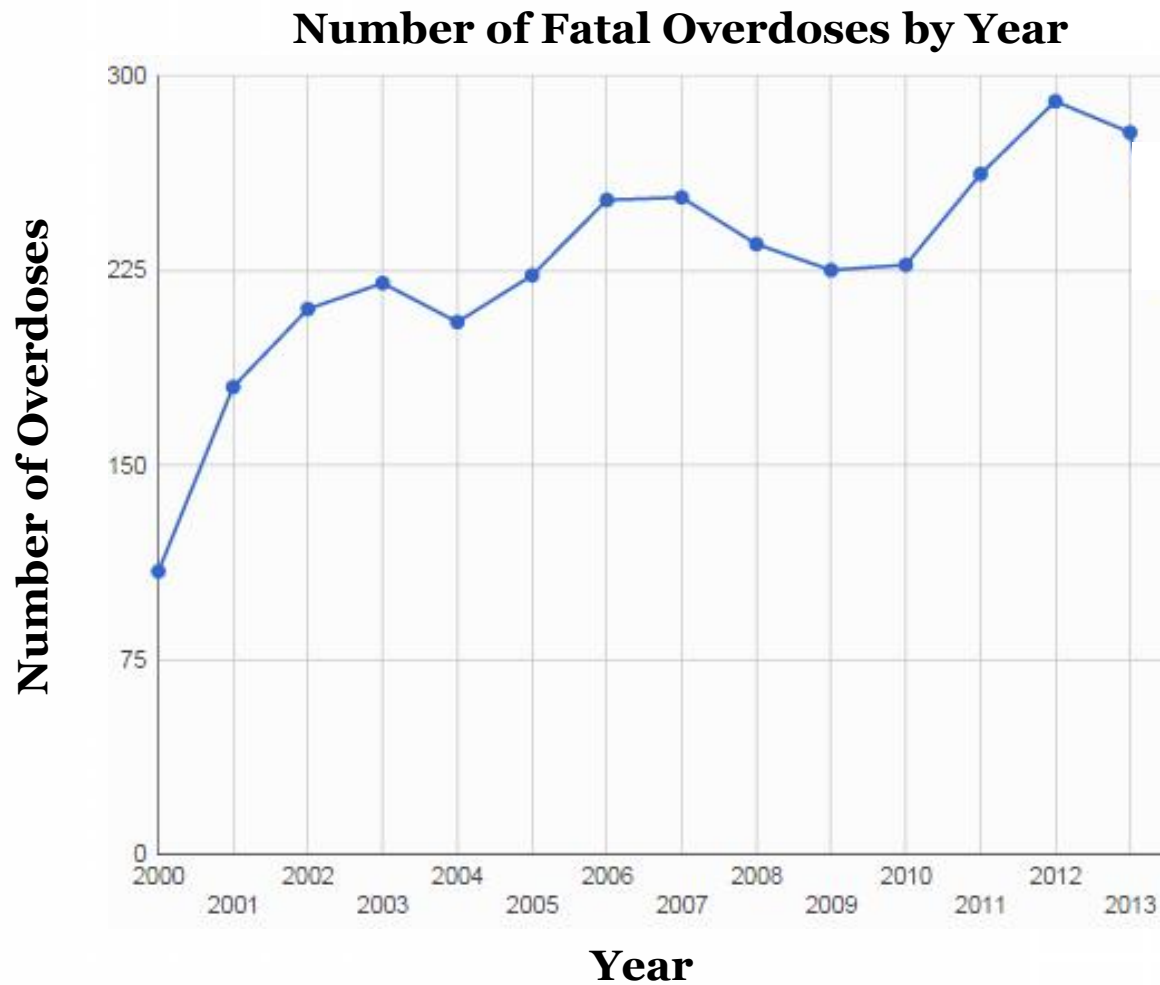
Weighted Annual Arithmetic Mean (2013)



Source: Allegheny County Health Department



Fatal Overdoses in Allegheny County, 2000-2014



Source: OverdoseFreePA



Deaths Due to Accidental Poisoning & Exposure to Noxious Substances in Allegheny County by District, 2007-2011

	Number of Deaths	Median Age at Death	Age-Adjusted Rate
Allegheny County	1,055	39.2	17.2
District 1	44	36.6	9.8
District 2	40	36.2	9.7
District 3	73	45.1	15.4
District 4	95	39.1	19.5
District 5	36	35.9	9.1
District 6	75	38.6	16.9
District 7	88	39.4	19.2
District 8	82	45.4	16.9
District 9	102	45.1	22.2
District 10	85	47.7	21.8
District 11	68	45.3	15.3
District 12	154	38.2	30.6
District 13	112	40.1	24.5

Source: Allegheny County Death Records



District 6 Deaths Due to Accidental Poisoning & Exposure to Noxious Substances by Municipality, 2007-2011

Municipality	Number of Deaths	Age-Adjusted Rate
Baldwin Borough	19	20.4
Baldwin Township	2	22.3
Brentwood	7	14.2
Castle Shannon	7	18.3
Clairton	9	29.6
Elizabeth Borough	2	29.1
Jefferson Hills	4	6.5
Pleasant Hills	5	14.2
South Park	10	17.1
West Elizabeth	0	-
Whitehall	10	14.2

Source: Allegheny County Death Records



District 9 Deaths Due to Accidental Poisoning & Exposure to Noxious Substances by Municipality, 2007-2011

Municipality/ Neighborhood	Number of Deaths	Age-Adjusted Rate
Dravosburg	4	36.2
Duquesne	6	24.1
Elizabeth T.	10	17.3
Forward	2	12.9
Glassport	6	31.2
Liberty	0	-
Lincoln	2	24.3
McKeesport	32	34.9
North Versailles	11	20.2
Port Vue	4	24.7
South Versailles	0	-
Versailles	3	34.9
West Mifflin	19	20.6
White Oak	3	7.7

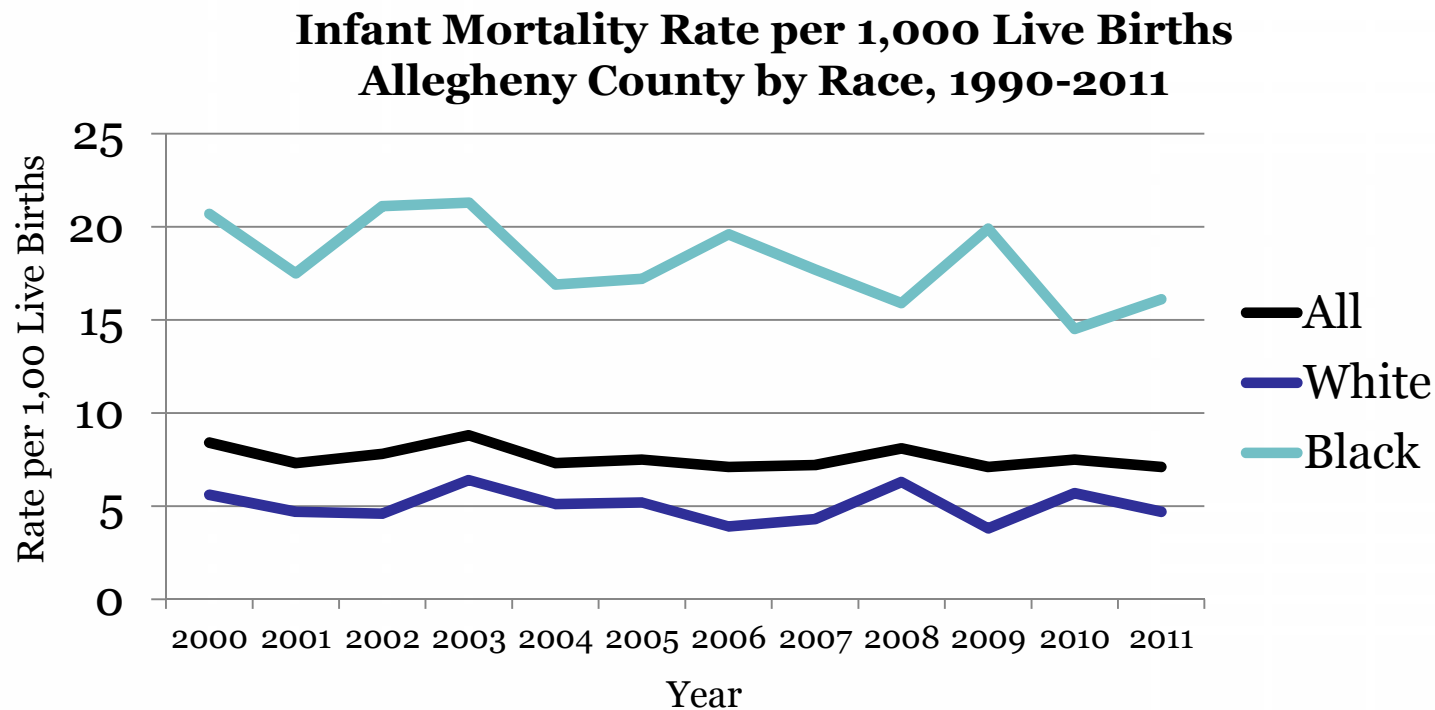
Source: Allegheny County Death Records



Infant Mortality in Allegheny County

Allegheny County has an infant mortality rate of 7.5 deaths per 1,000 live births in 2010.

- Statewide: 7.2 per 1,000 live births, 2010
- Nationally: 6.1 per 1,000 live births, 2010



Sources: 2009-2010 Allegheny County Mortality Report
National Center for Health Statistics, Division of Vital Statistics



Infant Mortality Rates per 1,000 Live Births in Allegheny County by District, 2007-2011

	Total Population	White	Black
Allegheny County	7.2	4.8	16.4
District 1	4.7	4.4	14.9
District 2	5.0	5.1	19.6
District 3	4.8	4.9	11.4
District 4	8.8	6.5	25.0
District 5	4.3	4.6	-
District 6	4.8	3.3	17.4
District 7	7.6	5.0	15.0
District 8	7.2	4.1	16.3
District 9	8.4	6.4	12.5
District 10	14.7	5.7	19.5
District 11	6.0	3.2	14.8
District 12	7.3	3.6	20.3
District 13	7.6	5.0	10.6

Source: Allegheny County Birth Records



Pregnancy Factors and Outcomes for District 6 by Municipality, 2010

	Percent Received First Trimester Care	Percent Smoked While Pregnant	Percentage of Births with Low Birth Weight
Allegheny County	93.0%	18.2%	8.1%
Baldwin Borough	93.2%	18.7%	6.9%
Baldwin Township	100.0%	11.8%	17.6%
Brentwood	91.1%	22.0%	9.8%
Castle Shannon	85.5%	17.9%	4.5%
Clairton	97.9%	37.7%	13.2%
Elizabeth Borough	84.6%	38.5%	7.7%
Jefferson Hills	93.5%	8.3%	6.3%
Pleasant Hills	97.1%	12.0%	2.7%
South Park	98.1%	18.6%	4.4%
West Elizabeth	100.0%	50.0%	-
Whitehall	97.7%	7.5%	2.0%

Source: Allegheny County Birth Records



Pregnancy Factors and Outcomes for District 9 by Municipality, 2010

	Percent Received First Trimester Care	Percent Smoked While Pregnant	Percentage of Births with Low Birth Weight
Allegheny County	93.0%	18.2%	8.1%
Dravosburg	100.0%	21.4%	-
Duquesne	92.4%	35.7%	22.3%
Elizabeth Township	93.6%	19.4%	8.9%
Forward	100.0%	19.2%	3.8%
Glassport	95.7%	34.0%	6.4%
Liberty	93.3%	11.8%	5.9%
Lincoln	87.5%	22.2%	-
McKeesport	90.8%	32.8%	14.9%
North Versailles	96.1%	22.4%	8.6%
Port Vue	91.7%	16.0%	8.0%
South Versailles	100.0%	-	20.0%
Versailles	85.7%	20.0%	-
West Mifflin	95.2%	22.2%	10.1%
White Oak	93.0%	11.9%	5.1%

* Cannot be reported

Source: Allegheny County Birth Records

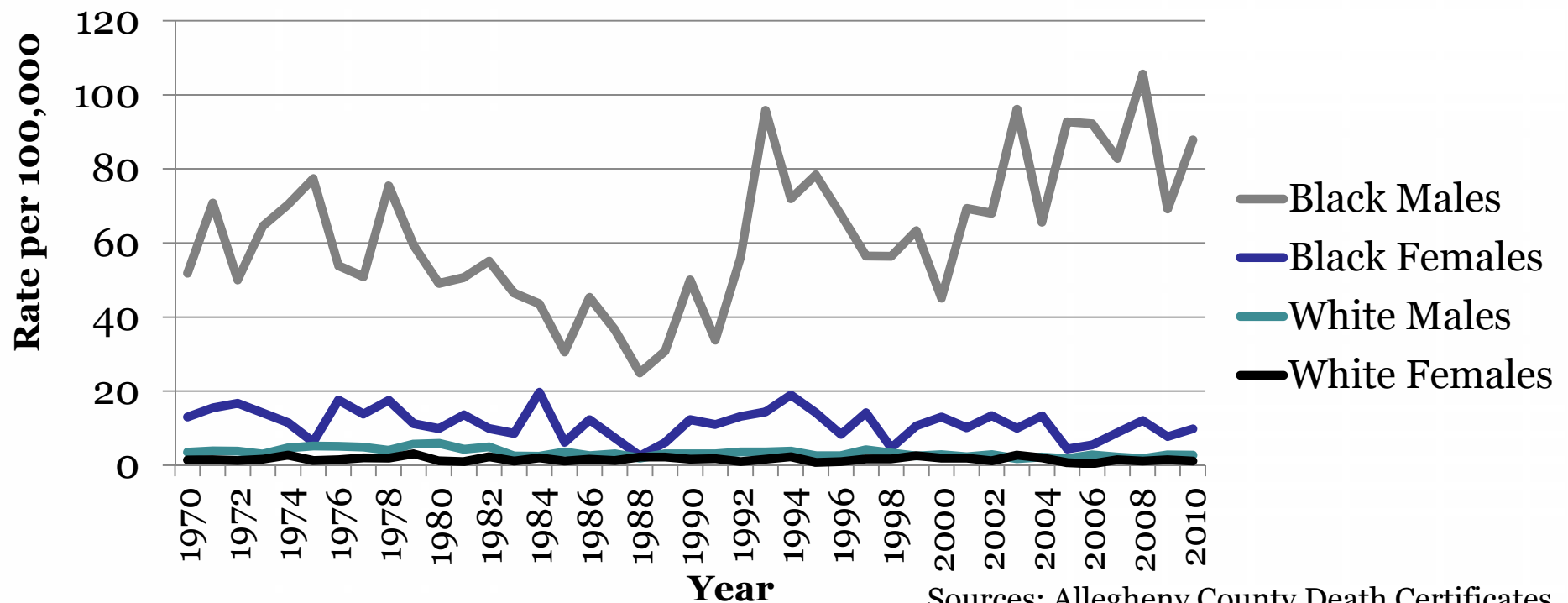


Homicide Rates in Allegheny County

Homicide represents the 15th leading cause of death in Allegheny County with an age-adjusted rate of 8.6 per 100,000.

- PA: 5.6
- US: 5.3

Age-Adjusted Homicide Rates per 100,000, 1970-2010



Sources: Allegheny County Death Certificates
CDC Age-Adjusted Homicide Rates 2004-2010



Homicide Deaths in Allegheny County by District, 2007-2011

	Rate per 100,000	Median Age of Death
Allegheny County	7.9	27.7
District 1	0.5	20.0
District 2	0.5	55.0
District 3	2.1	42.5
District 4	4.6	32.8
District 5	0.6	50.0
District 6	4.0	34.2
District 7	9.2	31.1
District 8	7.1	24.7
District 9	14.1	27.2
District 10	24.6	26.6
District 11	7.6	25.8
District 12	10.4	27.5
District 13	12.9	25.4

Source: Pennsylvania Death Records

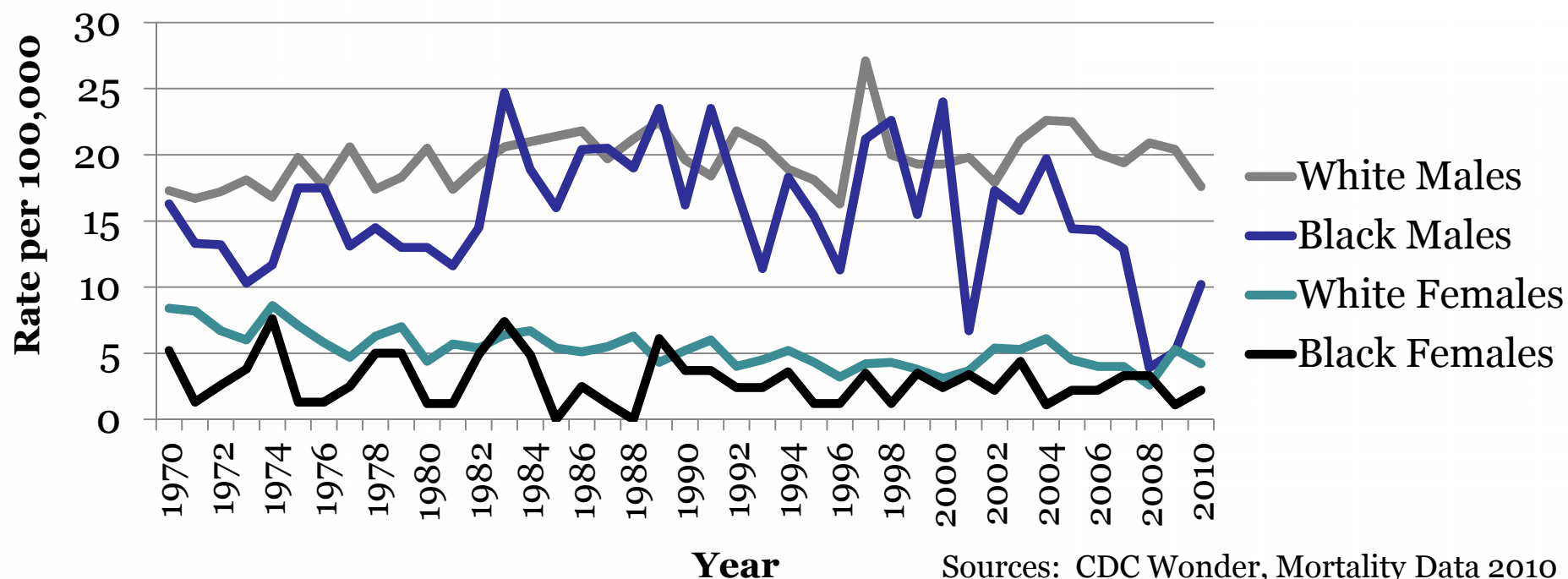


Suicide Rates in Allegheny County

In 2010, Allegheny County had an age-adjusted suicide rate of 9.9 per 100,000

- PA: 11.9
- US: 12.1

Age-Adjusted Suicide Rates per 100,000, 1970-2010



Sources: CDC Wonder, Mortality Data 2010
Allegheny County Death Certificates



Allegheny County Health Department



Allegheny County Health Department

542 4th Avenue · Pittsburgh, PA 15219 · 412-687-ACHD (2243) · FAX: 412-578-8325



Public Health
Prevent. Promote. Protect.

Director's Office

Bureaus

Clinics/Locations

Recent News

Employment

Contact Us

Search ACHD.net

Useful Links:

[Food Facility Inspection Search](#)

[Food Safety Certification Course Schedule](#)

[Health Department Regulations](#)

[Illness & Disease Fact Sheets](#)

[Opening a New Food-Related Business?](#)

[Recycling Resource Directory](#)

[Reportable Diseases & Conditions](#)

[Resources for Under- & Un-Insured](#)

[Search Registered Master Plumbers](#)

[Travel Immunizations Advice](#)

[Report an Air Quality Complaint](#)

[Report a Food Safety Complaint](#)

[Report a Housing-Related Complaint](#)

HEALTH VOICE

The Meetings are over, but the process continues. Learn more here...

Live Well Allegheny

Make a choice to live



Did you wash them?
Hand washing stops the
spread of germs...



Community Health Dashboard

Explore the [Community Health Dashboard](#) here or by clicking on an indicator below.

(The indicators shown below will change each time this page is refreshed.)

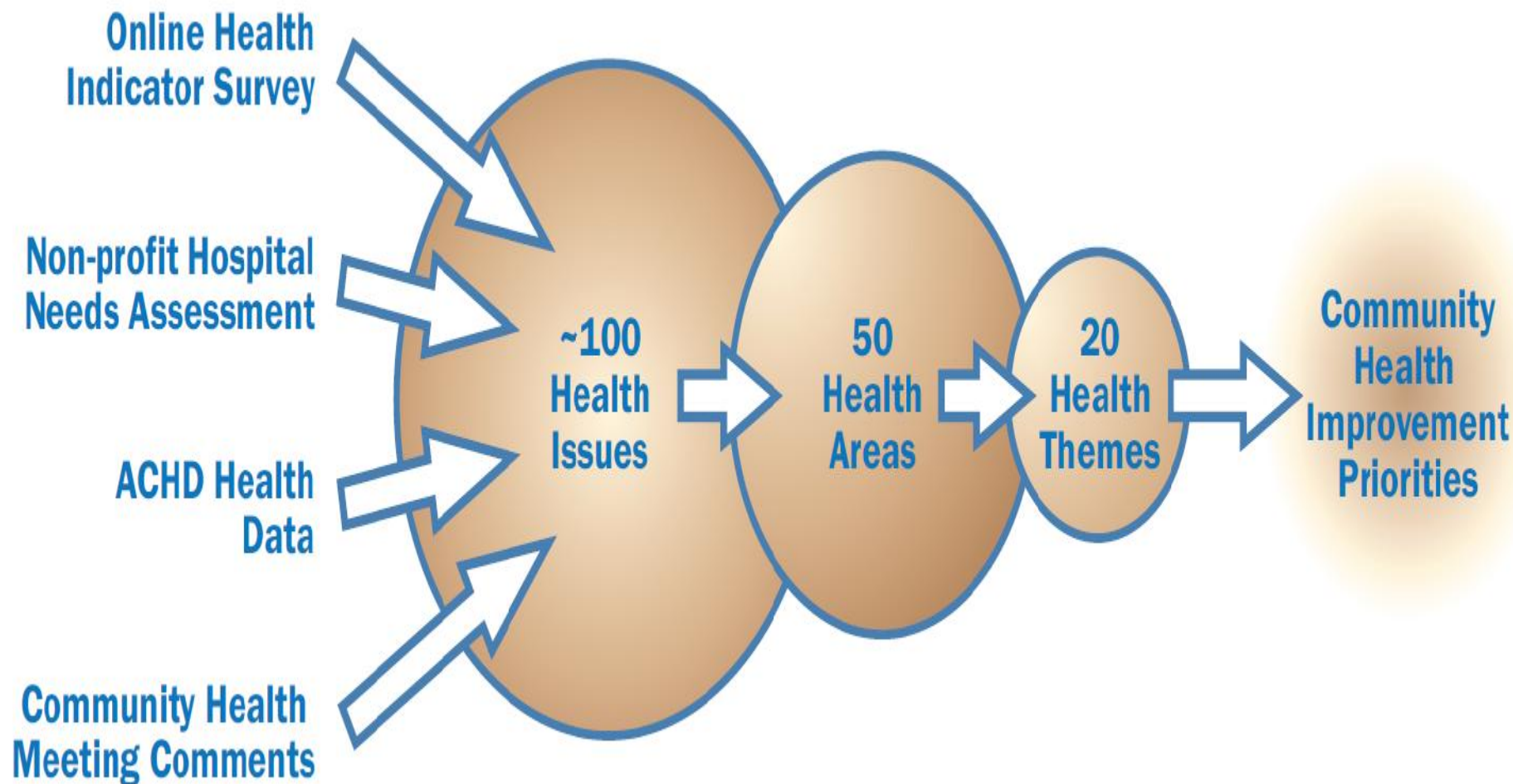
COMMUNITY DASHBOARD



[See all indicators](#)



Allegheny County Health Department





20 Categories of Health Concerns from community meetings

- Access to Healthcare
- ACHD
- Chronic Disease Health Risk Behaviors
- Chronic Diseases - Screening/Treatment
- Disparities/Cultural Competency/Special Populations
- Emergency Capability
- Environment
- Health Promotion & Literacy
- Healthcare Utilization
- Healthy Aging
- Infectious Disease
- Infrastructure
- Injury
- Maternal & Child Health
- Mental Health & Substance Abuse
- Nutrition
- Occupational Health
- Social Determinants of Health
- Sustainability
- Transportation



Cross-Cutting Strategic Theme

Health Equity

- Disparities/ Cultural Competency/
Special Populations
 - Disabilities
 - Gender Disparities
 - Geographic Disparities
 - Immigrant Health
 - LGBT
 - Men's Health
 - Racial Disparities
 - Translation Services
- Social Determinants of Health
 - Education
 - Housing
 - Poverty



5 Health Improvement Priorities (Goals and Related Objectives)

1. Access to Healthcare

- Access to Healthcare Services
- Insurance
- Transportation

2. Chronic Disease Health Risk Behaviors

- Obesity/Poor Nutrition
- Physical Inactivity
- Smoking/Tobacco

3. Environment

- Air Quality
- Fracking
- Water Quality

4. Maternal and Child Health

- Asthma
- Breastfeeding
- Infant Mortality
- Low Birth Weight
- Parent Support

5. Mental Health and Substance Abuse

- Depression
- Drug and Alcohol Use
- Integration of Mental Health into Physical Health
- Trauma



Final Draft Goals

- **Access:** Identify and address gaps in and barriers to access so that all residents of Allegheny County can obtain affordable, person-centered, high quality health care
- **Chronic Diseases:** Decrease preventable chronic disease by assuring access to resources, knowledge, and opportunities for residents to adopt healthy behaviors
- **Environment:** To enhance quality of life by reducing pollution and other environmental hazards using coordinated, data-driven interventions
- **Maternal & Child Health:** Improve health and quality of life of women, infants, children, caretakers, and their families, especially in vulnerable communities
- **Mental Health & Substance Abuse:** Reduce mortality related to mental and substance use disorders by ensuring the integration of physical and behavioral health across the healthcare and social support systems



Population Health

- Population health connotes a high level assessment of a group of people. This epidemiologic framework is often in direct opposition to the manner in which the health care system has cared for patients; one individual at a time.





Definitions of Population Health

- **Population served by an individual provider**
 - Insuring that patients are assigned correctly to PCP
- **Population served by the entire delivery system**
 - Primary care patients
- **Population residing in the broader community**
 - Geographic area



Differing views of population health

- Health Deliver (Clinical View)
 - Panel of patients
 - High risk patients
 - Patients with specific conditions or utilization
- Public Health View
 - Defined by geography
 - Indicators are community indicators
 - Population within geography may change over time



Hot-Spotting and Cold-Spotting

Hot-Spotting

- Examining the top % of high cost utilizers
- Identifying where they are in a community
- Offering intensive care management
- Reducing costs of ED and Inpatient care

Cold-Spotting

- Context of communities that require expensive acute care
- Lack of essential opportunities for health
 - Social integration,
 - Healthy Food Access
 - Education, employment
 - Safety





Individual and Population / Social level questions

	Individual	Population / Social
Smoking	How can we stop these individuals smoking?	How can we change the social & economic environment so it discourages smoking?
Childhood Obesity	How can we encourage obese children to lose weight?	What social and economic factors mean our community has higher rates of childhood obesity than others?
Depression	How do we best counsel teenagers with depression?	Why have rates of teenage depression gone up in our community in the last 10 years? What can be done to change this across the community?
Homelessness	How can we provide a home to a homeless person?	How can we design a housing system which ensures no one is homeless?
Drug Use	How can we educate people to use substances responsibly or abstain?	What legislation and policies can we adopt to reduce harm from drugs?

After Tesh, 1988 Hidden Arguments, as presented by Fran Baum



Live Well Allegheny

Jan 2014 - Allegheny County
Executive Rich Fitzgerald
announced a new campaign to
promote health and wellness
among residents



“Our residents are seeking an active, healthy lifestyle and are taking proactive steps to improve their health,”



www.livewellallegheny.com



A WALK IN THE PARK CAN KEEP
YOU YOUNG AT HEART

Allegheny County operates nine parks in the region spanning over 12,000 acres. The County is also home to two State Parks





Live Well Accomplishments

- Strategic planning with key stakeholders
- Resource guide/website
- 11 Municipalities and 2 Schools districts gained Live Well status
- Workplace and restaurant criteria being developed
- Plan for a Healthier Allegheny includes a LiveWell goal
- Focus on inequalities: the Mon Valley partnership
 - Allegheny Intermediate Unit
 - Turtle Creek Human Services
 - Economic Development
 - Tobacco Free Allegheny
 - Steel Valley/Mon Cog
 - Childrens Hospital of Pittsburgh, UPMC
 - Allegheny Health Network-Braddock



How Can We Work Together?

- Commit to support of the Plan for a Healthier Allegheny goals
- Work with us to accomplish strategies in the Mon Valley and South Hills
- Use data and help with support for monitoring data
- Listen to the community



We Can Make a Difference - Together

