

# Assessing Community Need in Suburban Allegheny County: **Southeastern Allegheny County**

Erin Dalton

Allegheny County Department of Human Services

June 2015



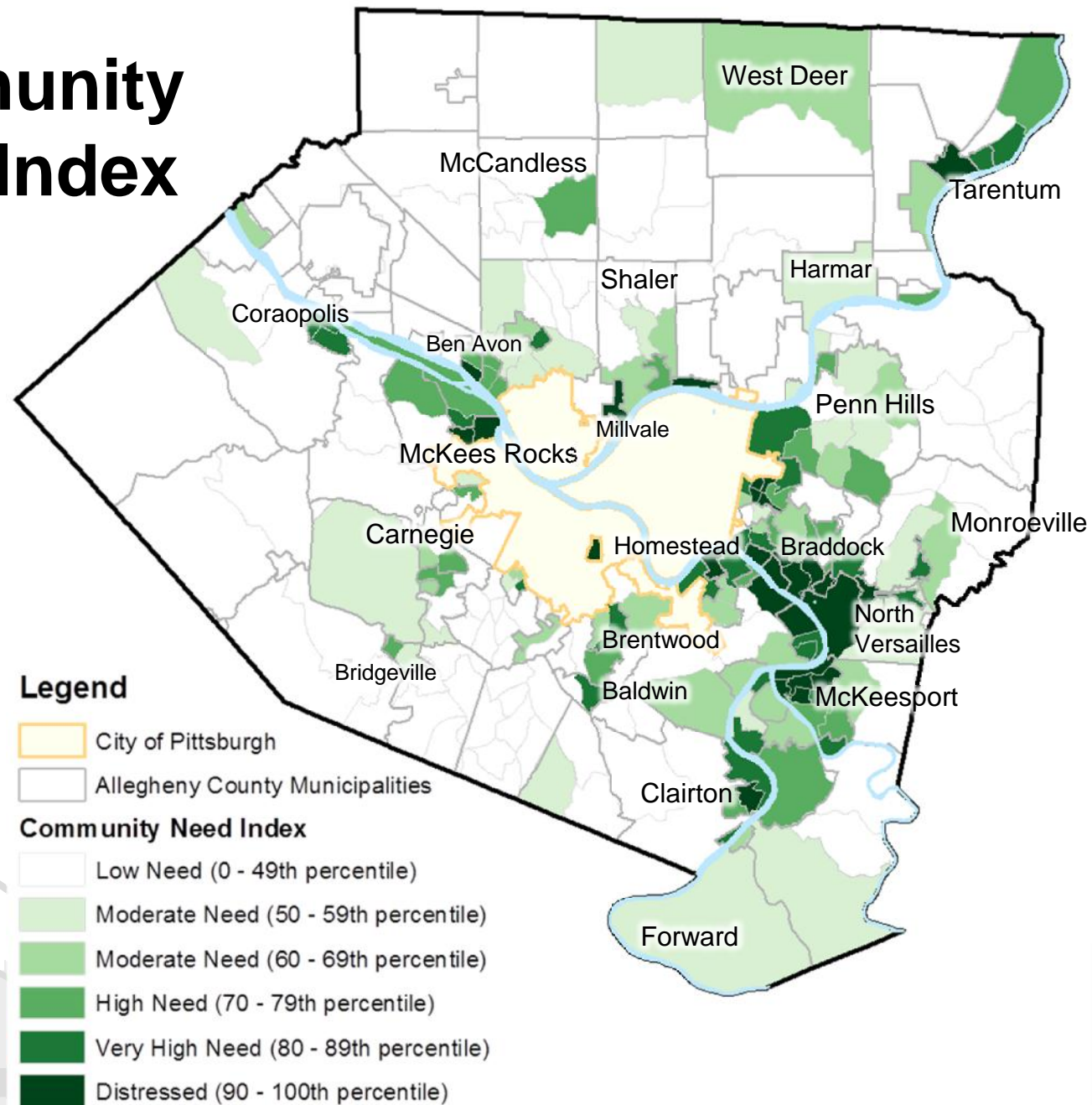
# Community Need Index

- Population below 100% of the federal poverty line<sup>†</sup>
- Families headed by single females<sup>†</sup>
- Youth ages 16 to 19 without a high school diploma or equivalent, and not enrolled in school<sup>†</sup>
- Civilian males ages 16-64 who are unemployed or not in the labor force<sup>†</sup>
- Population below 200% of the federal poverty line
- Houses vacant
- Households with no available vehicle

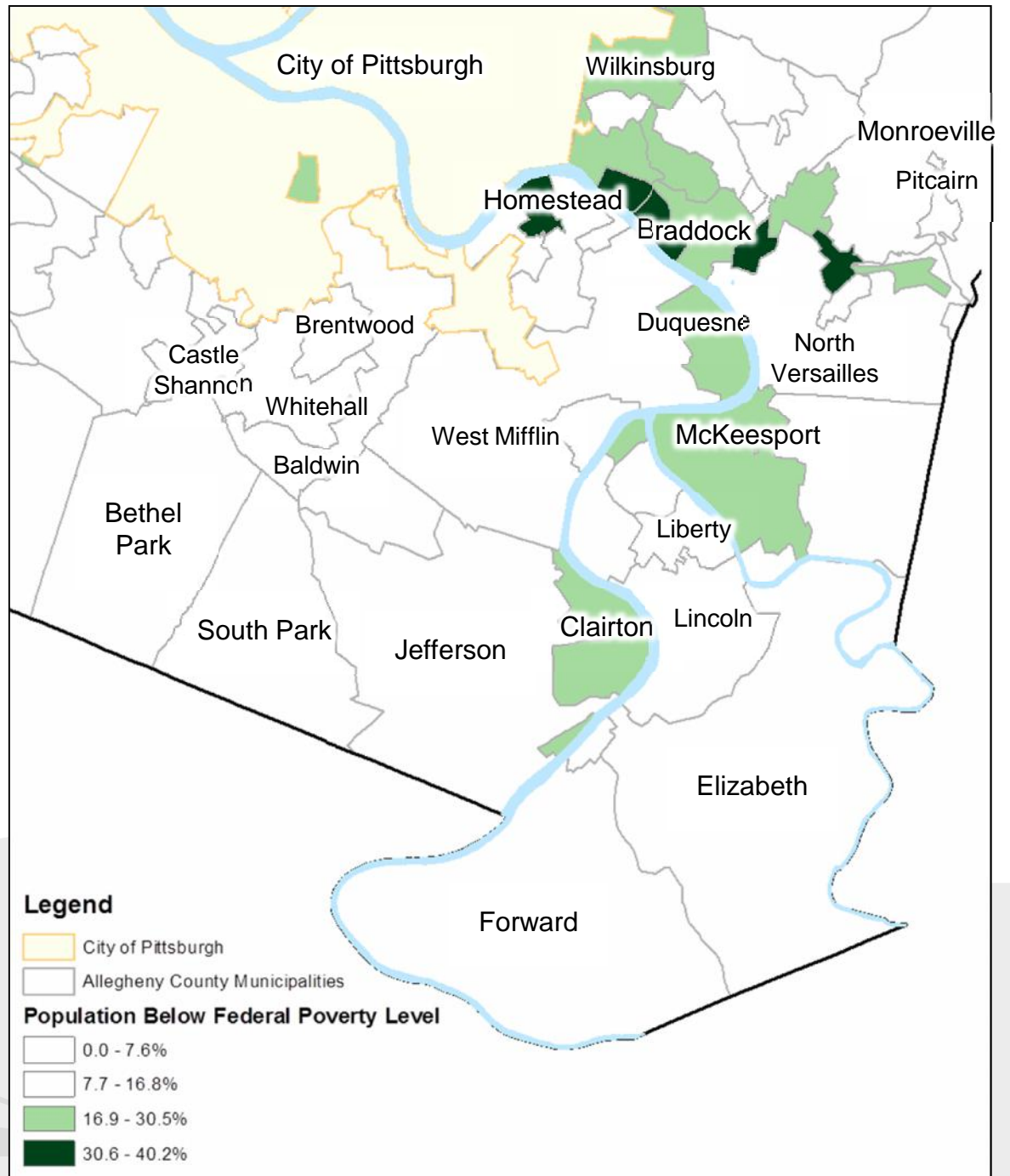
\* All indicators are Census variables measured as percentages

<sup>†</sup> Indicators included in Hare and Mather's criteria for severely distressed neighborhoods

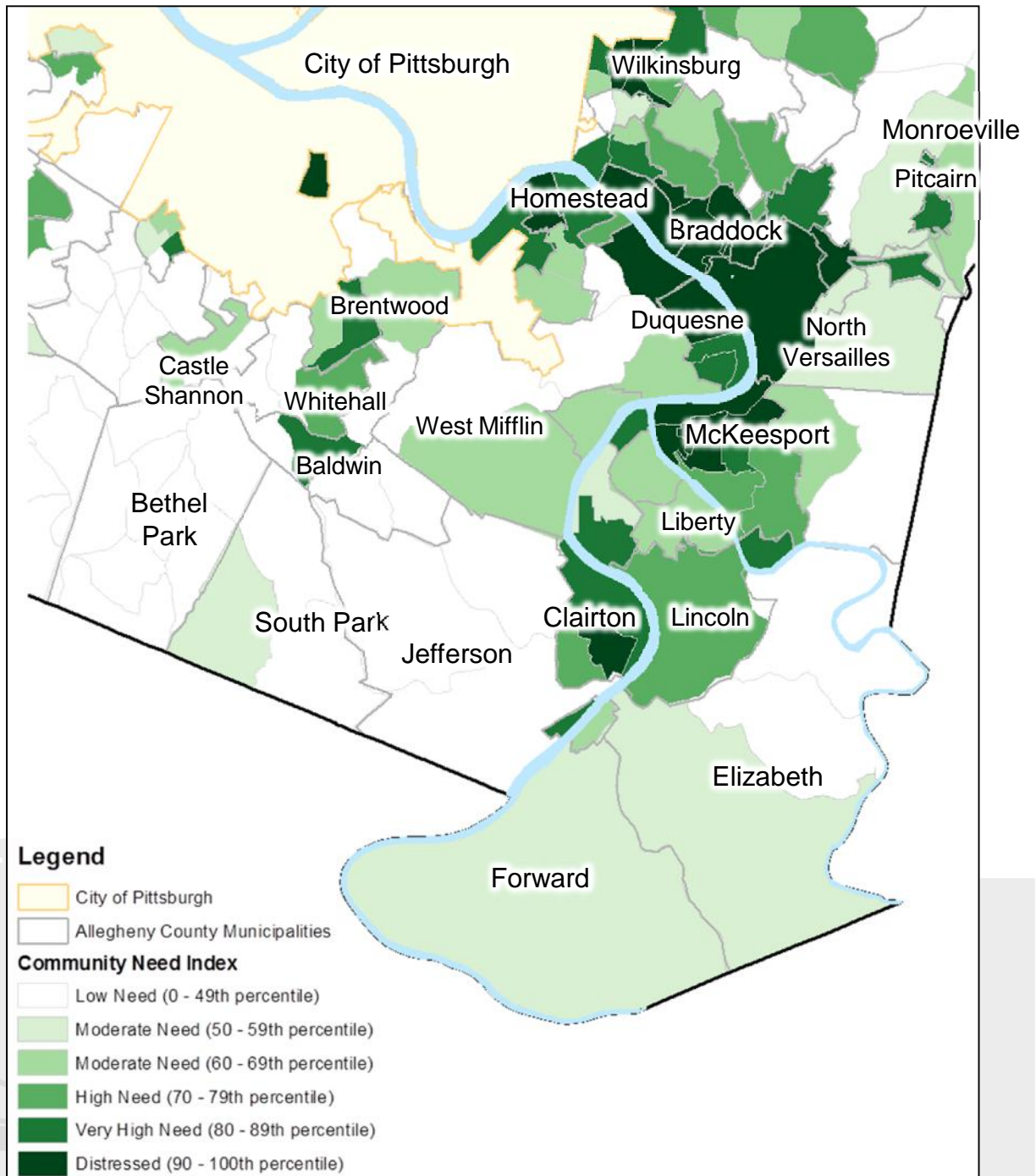
# Community Need Index



# Former Method of Analysis: Poverty Rate



# Community Need Index





# Communities with Changing Need

2000-2009

## *Communities with Emerging Need*

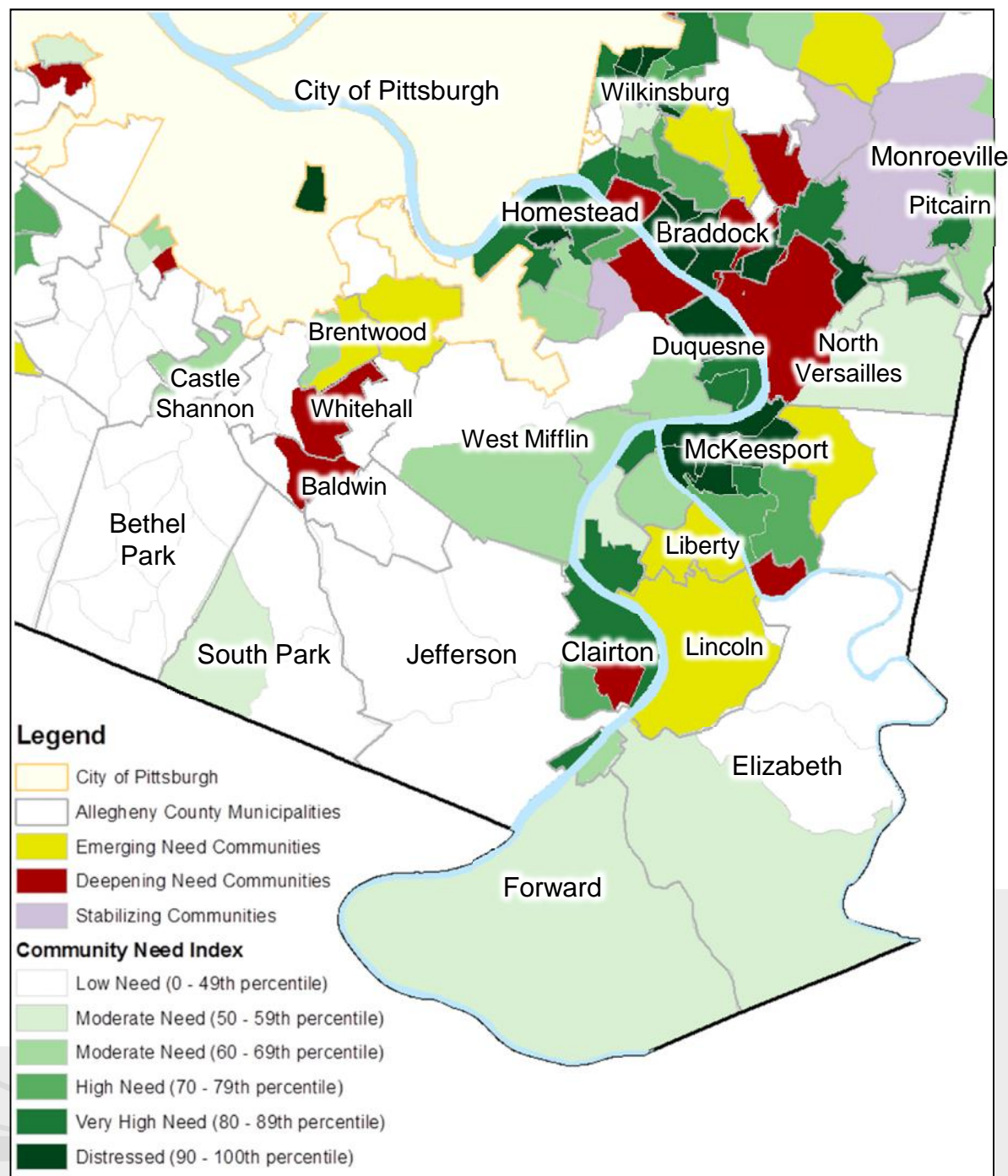
At least two tiers worse in 2009, in top 50% (tiers 6-10) in need in 2000

## *Communities with Deepening Need*

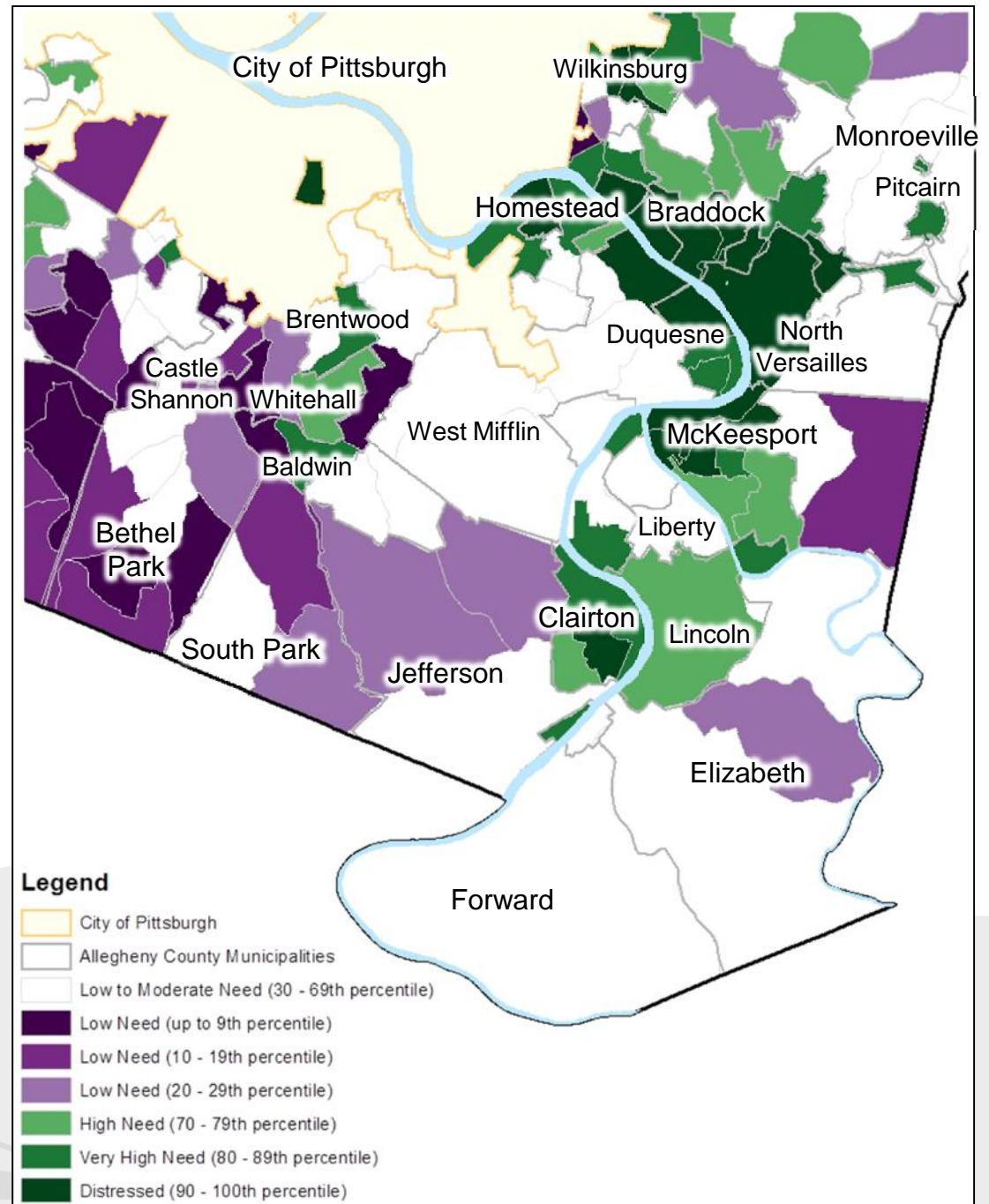
At least one tier worse in 2009, and in top 40% (tiers 7-9) in need in 2000

## *Stabilizing Communities*

Starting in top 40% in need in 2000, and at least two tiers better in 2009 (and outside of top 30% in 2009)



# Proximity of Struggling Communities to Healthy Communities



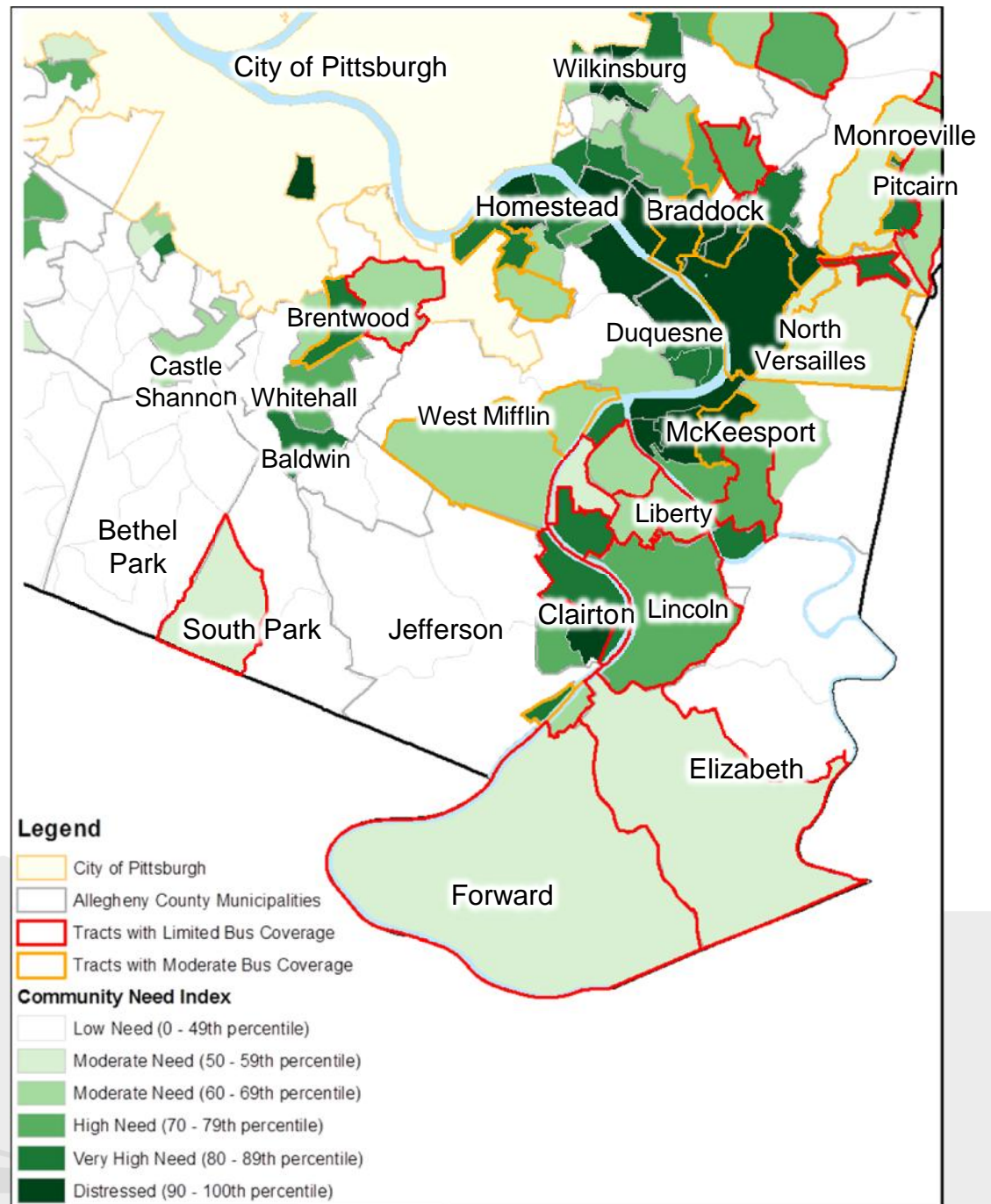
# Communities with Limited Access to Public Transportation

Percentage of a tract within 2000 feet of a bus stop:

High access = more than 80%

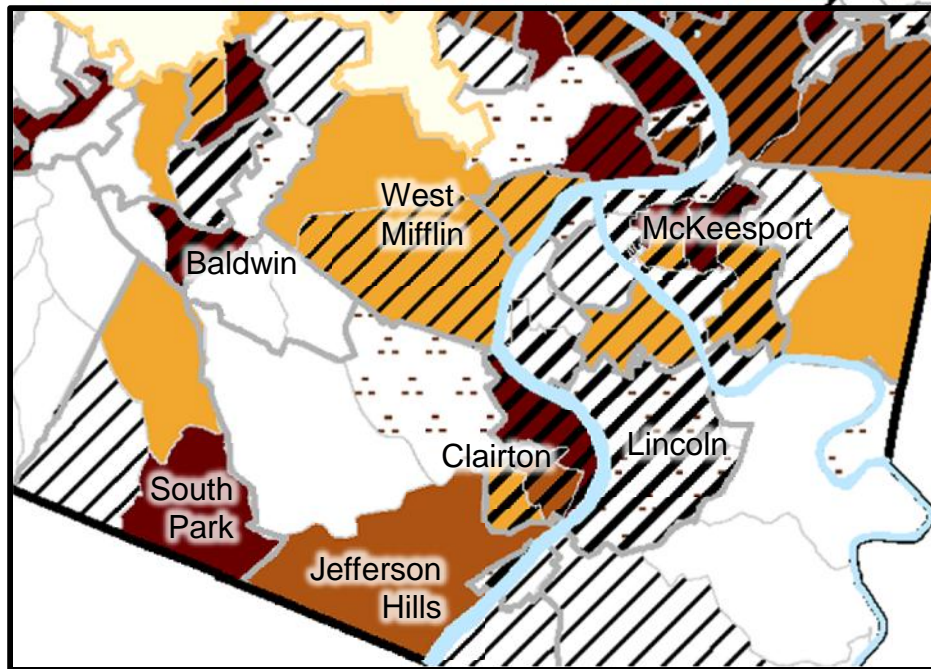
Moderate access = 40-80%

Limited access = less than 40%





# Families with Young Children

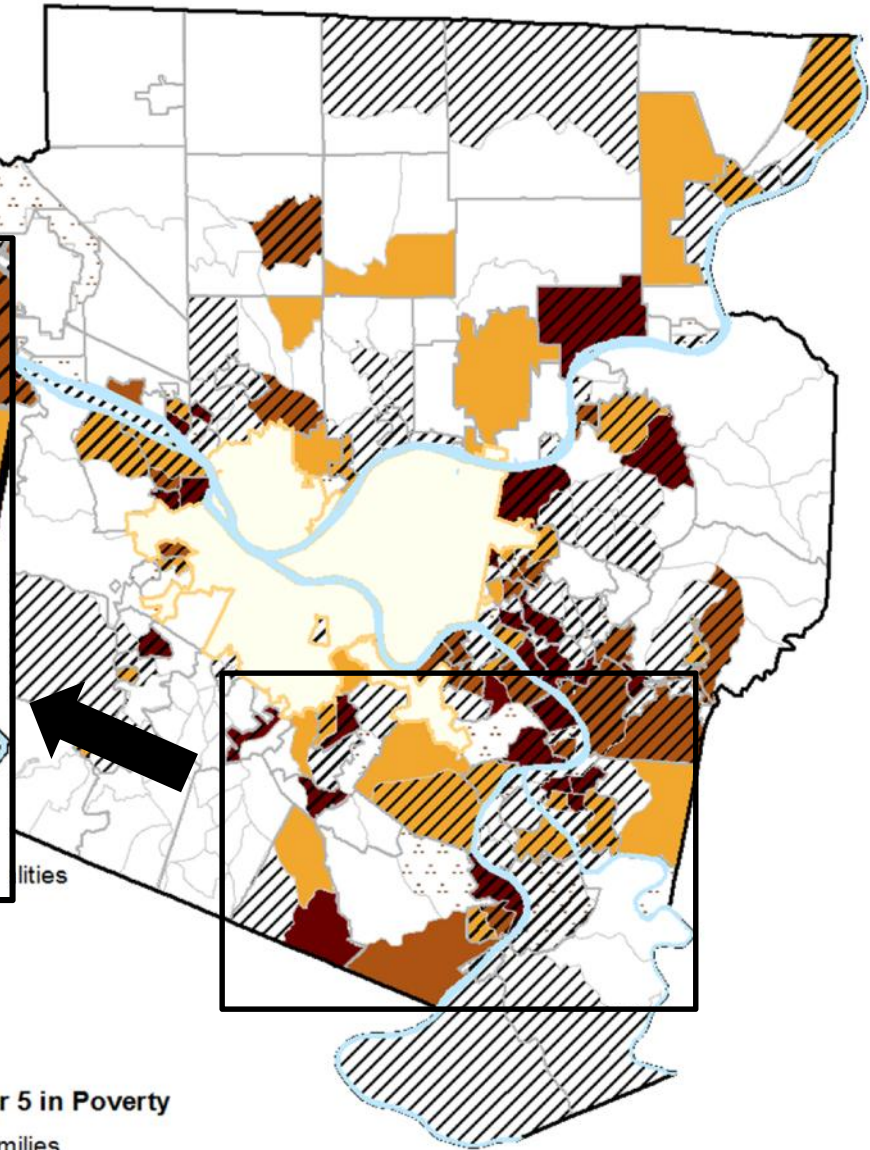


## Community Need Index

- Low Need
- Moderate Need
- High Need - Distressed

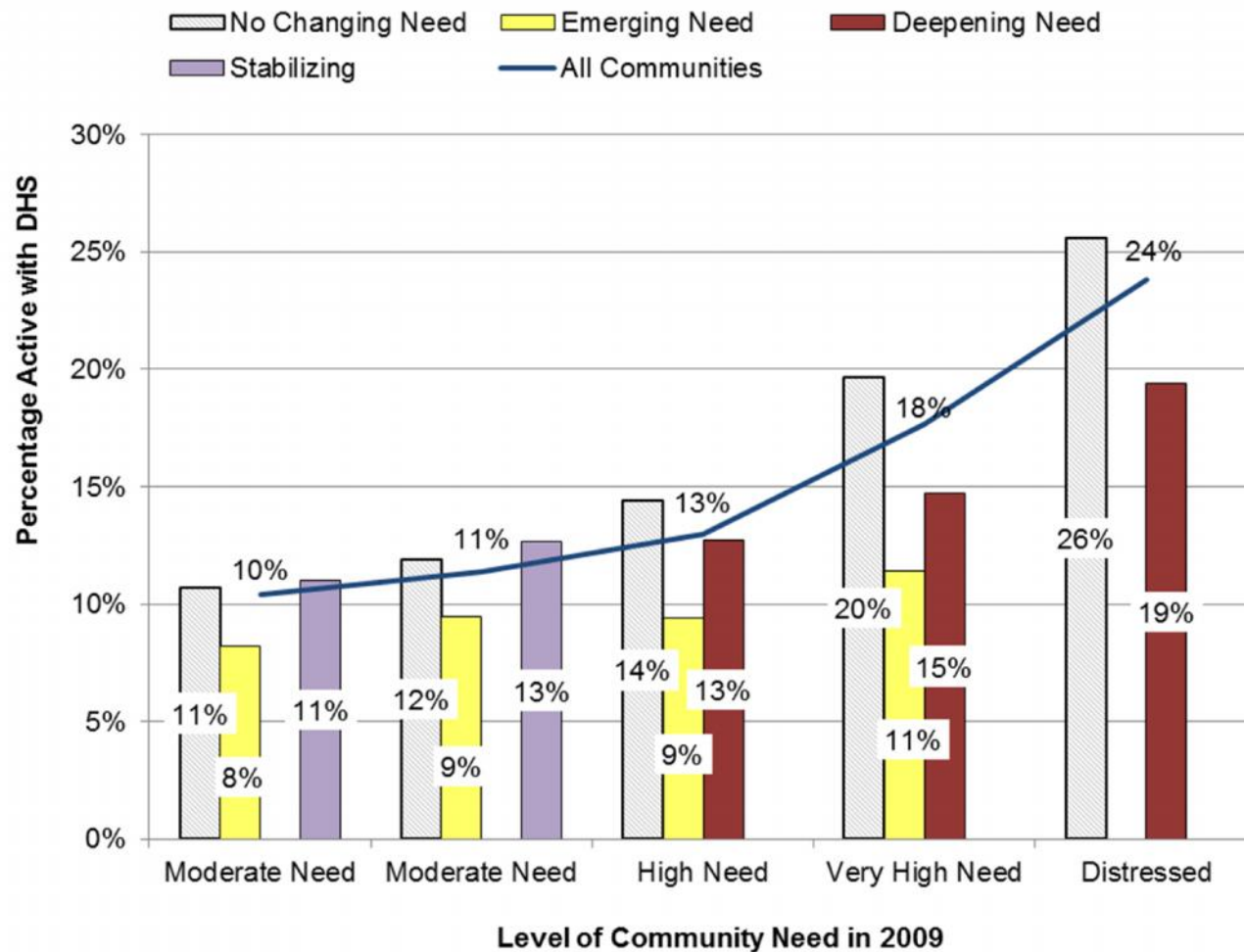
## Families with Children Under 5 in Poverty

- NA, fewer than 15 total families
- Less than 15%
- 15 to 29%
- 30 to 49%
- 50% or higher



# Communities with Changing Need

## Average Percent of Residents Served by DHS by Changing Community Needs



# Next Steps

- Updating the Community Need Index as additional years of Census ACS data are released
- Expanding use of a new, similar relative-need index which has been developed for tracts within the City of Pittsburgh
- Including the Community Need Index in internal maps as is relevant for planning decisions
- Helping community groups use Community Need Index data in decision-making
- For more information: <http://www.alleghenycounty.us/dhs/research-basic-needs.aspx>

