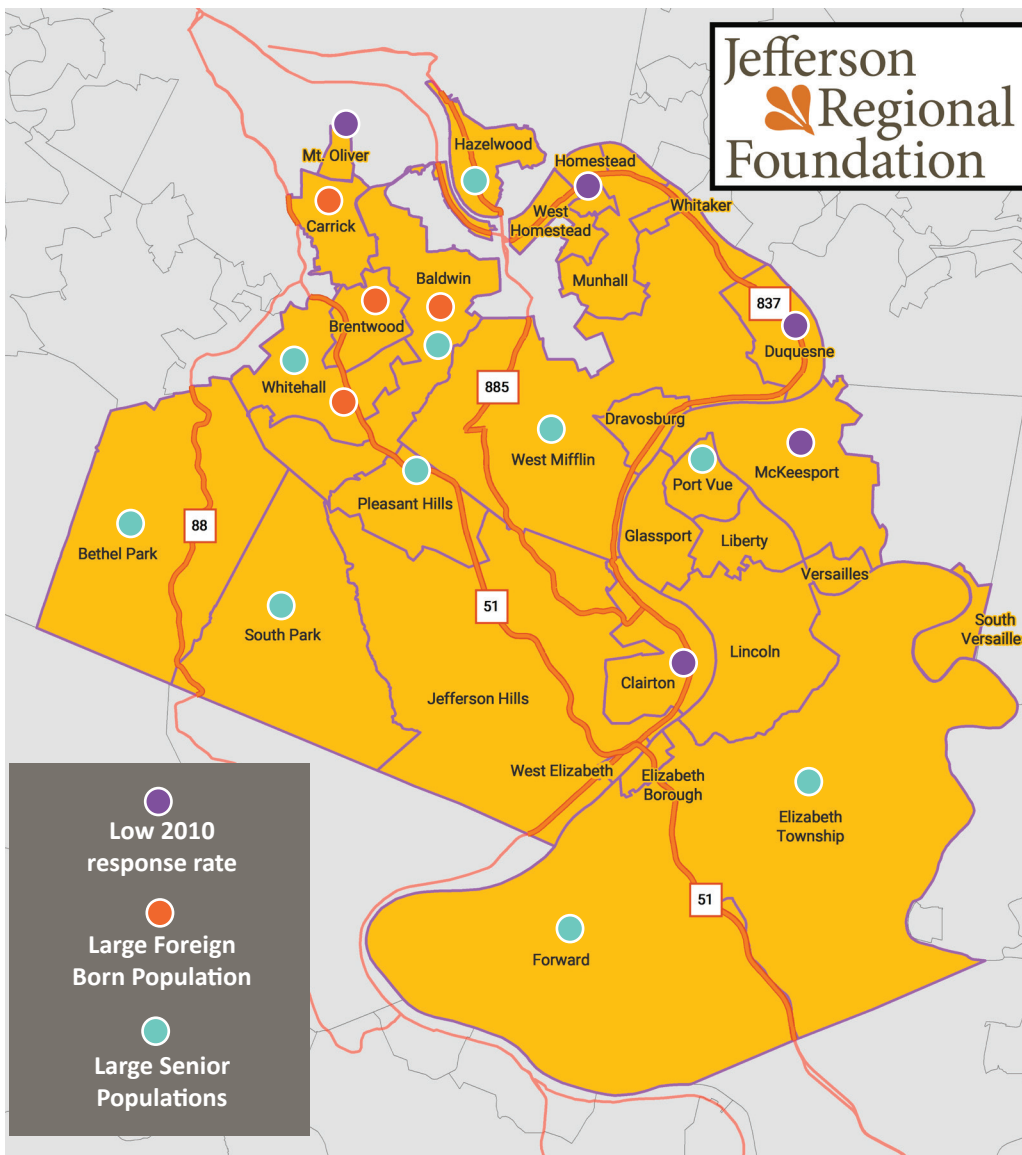


Outreach is critical to reach Hard to Count populations

The Jefferson Area includes:

- The largest grouping (40%) of the county's immigrant and refugee populations
- Rural households
- Very young children (0-5)
- Communities with historically low response rates
- Gentrification has driven more low-income residents into local suburbs
- People of color
- A higher percentage of seniors than the county
- Students at local colleges and universities



Large percentage of households which lack internet access, predicting low response rates:

Clairton

Census Tracts: 4927, 4928

Duquesne

Census Tracts: 4867, 4869, 4868

Homestead

Census Tract: 4838

McKeesport

Census Tracts: 5521, 5509, 5519, 5523, 5520, 5512, 5522

Mount Oliver

Census Tract: 4810

Potential for undercount due to large percentage of foreign born populations:

Baldwin Census Tract: 4801.01

Brentwood Census Tract: 4782

Carrick Census Tract: 2902

Whitehall Census Tract: 4773

As of 2014, 19% of the population in our area is over the age of 65, higher than Allegheny County. Communities listed by percentage of population over the age of 65:

Whitehall – 23%

Forward – 22%

Pleasant Hills – 22%

South Park – 22%

Bethel Park – 20%

Hazelwood – 20%

Port Vue – 20%

Baldwin – 20%

Elizabeth Township – 19%

West Mifflin – 19%

Hard to Count Populations in Our Area

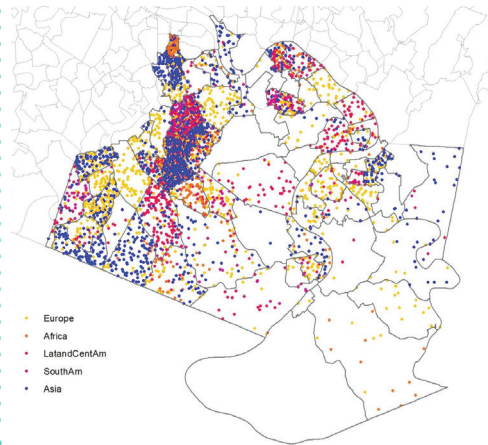
YOUNG CHILDREN (0-5)

Communities are listed by percentage of population under the age of 5, as of 2016:

Duquesne – 13%
Glassport – 11%
Mount Oliver – 10%
Whitehall – 10%
Brentwood – 9%
Clairton – 9%
Jefferson Hills – 9%
McKeesport – 9%
Bethel Park – 8%
Carrick – 8%
Hazelwood – 8%
Munhall – 8%
South Park – 8%

IMMIGRANT AND REFUGEE HOUSEHOLDS

Number of Foreign-Born Residents by Region of Origin



STUDENTS AT LOCAL COLLEGES AND UNIVERSITIES

CCAC South

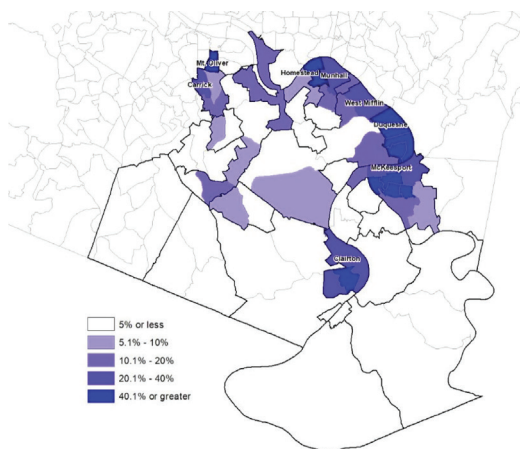
CCAC enrolls a total of 43,697 students annually in Allegheny County

Penn State Greater Allegheny

Penn State Greater Allegheny enrolls approximately 600 students, with about 80% commuting from off-campus housing or home

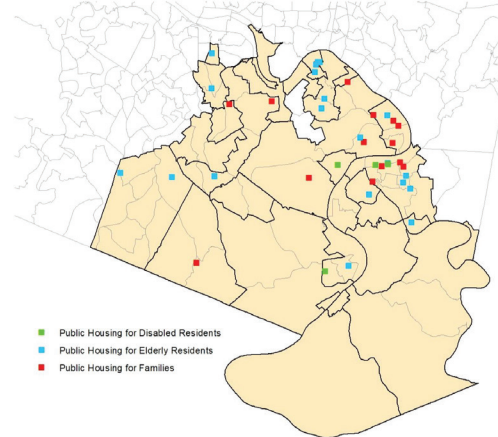
PEOPLE OF COLOR

Race: Black residents, as a percentage of the population are increasing in the Jefferson Area



LOW-INCOME HOUSING

10 % of Jefferson Area families have incomes below the poverty level



For a full listing of public housing in our area, visit <https://jeffersonrf.org/2020census/>

To view or download the community maps above, visit <https://jeffersonrf.org/jefferson-community-data-trends-maps>

Looking for more data on hard-to-count communities in your area?

Hard to Count Census Tracts Map www.censushardtocomounts2020.us

BeamData Identifying Allegheny County's Hard-to-Count Communities Map <https://beamdata.shinyapps.io/lrsalleghenycty>

Allegheny County Asset Map

<http://alcogis.maps.arcgis.com/apps/MapJournal/index.html?appid=f19e665939c245cbac512c326447f633>

Jefferson Community Data Maps <https://jeffersonrf.org/jefferson-community-data-trends-maps/>

Jefferson Community Snapshots <https://jeffersonrf.org/resources/community-reports>