

The 7th Annual

JEFFERSON FORUM

Jefferson
Regional
Foundation

Embracing Transformation

Thank you for joining! The meeting will begin at 1pm.

This session is being recorded.

Please rename yourself –

Full Name and Organization other participants can see!

The 7th Annual

JEFFERSON FORUM

Jefferson
Regional
Foundation

Embracing Transformation

**Transforming Data – Data as a Tool
for Change**

Intro by Kelleigh Boland

**Director of Grantmaking & Strategy, Jefferson Regional
Foundation**

Foundation Staff



Mary Phan-Gruber



Chuck Modispacher



Kelleigh Boland



Colleen Cadman



Steve Ankney

Today's Session is Led by our Partners:



**BAYER CENTER FOR
NONPROFIT MANAGEMENT**

**Moderated by
Carrie Tancaitor**

Associate Director
Bayer Center for Nonprofit Management

**Session Produced by
Yvonne Van Haitsma**

Associate Director
Covestro Center for Community Engagement

Agenda

- I. Welcome
- II. Panelists:
 - a. Rich Overmoyer, 4th Economy
 - b. Bobbi Watt Geer, United Way of Southwestern Pennsylvania
 - c. Bhavini Patel, beamdata
- III. Panelist: Question and Answer
- IV. Small group work
 - I. Small group shares
- V. Panelist Question: Question and Answer
- VI. Small group work
 - I. Small group shares
- VII. Closing





Transforming Data, Data as a Tool for Change

Jefferson Forum

May 24th, 2021

Our Values



Curiosity



Collaboration



Creativity



Empathy



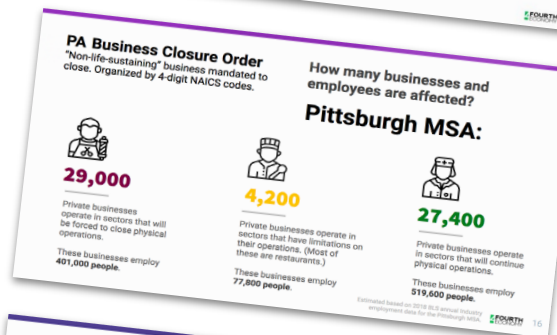
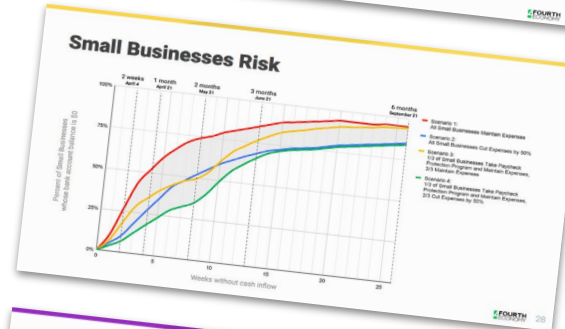
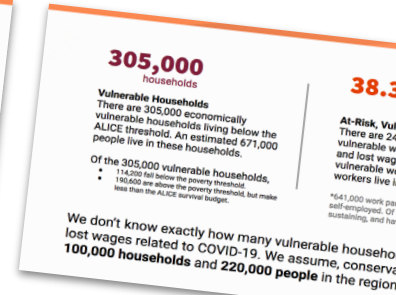
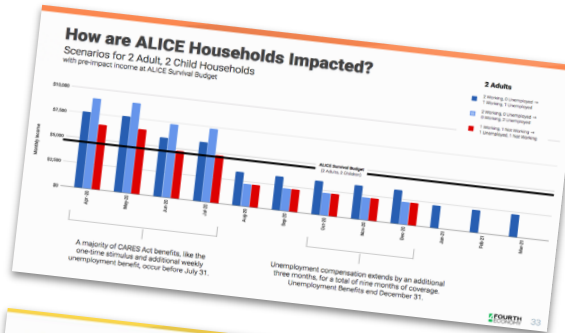
Fun



Fourth Economy is a national strategy firm that fosters action to create great communities, impactful organizations, and strong economies.

Data when well presented...

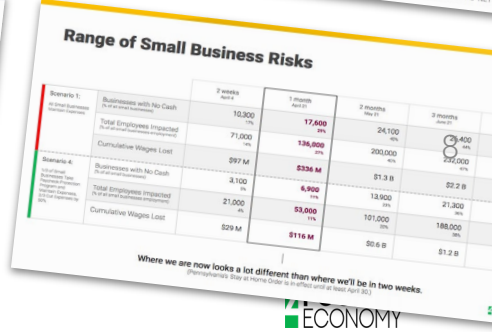
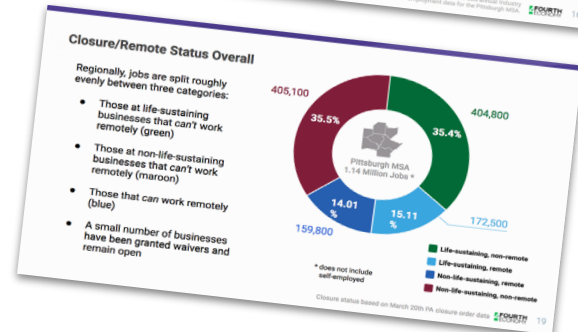
- Can provide backing to the lived experiences of residents
- Can allow voices to be heard
- Can align resources
- Can change opinions
- Can impact lives



The Majority of Pittsburgh Workers Don't Have the Ability to Work Remote

Occupation	Percent Able to Work Remotely	Percent of Employees in Pittsburgh MSA
Full Remote: E.g. Software Developers, Computer Programmers	100%	6.0%
Almost All Remote: E.g. Financial Advisors, Graphic Designers	90%	10.7%
Mostly Remote: E.g. Accountants, Real Estate Brokers	75%	16.4%
Some Remote: E.g. Event Planners, Operation Managers, Librarians	50%	5.0%
Very Little Remote: E.g. Therapists, Medical Assistants, Pharmacy Technicians	25%	6.7%
No Remote: E.g. Clerks, Machine Operators, Service Workers, Restaurant Staff	0%	28.3%

Occupation profiles were classified using BLS and ONET

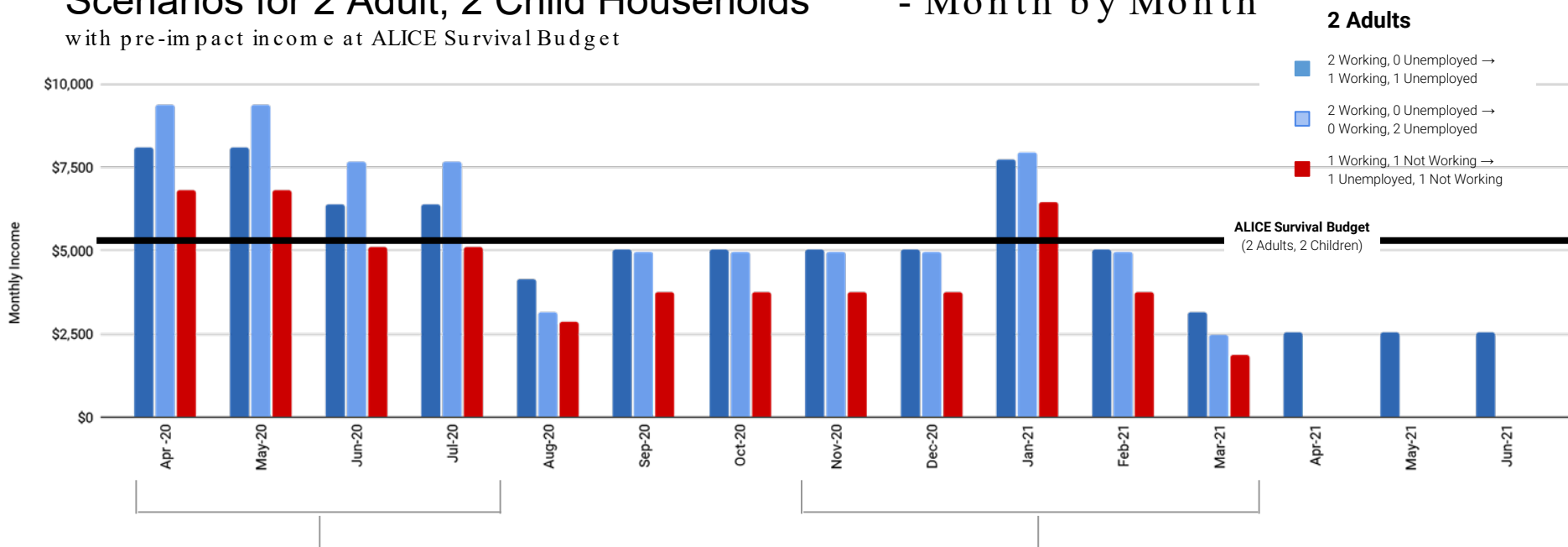


How are ALICE Households Impacted in Michigan?

Scenarios for 2 Adult, 2 Child Households

- Month by Month

with pre-impact income at ALICE Survival Budget

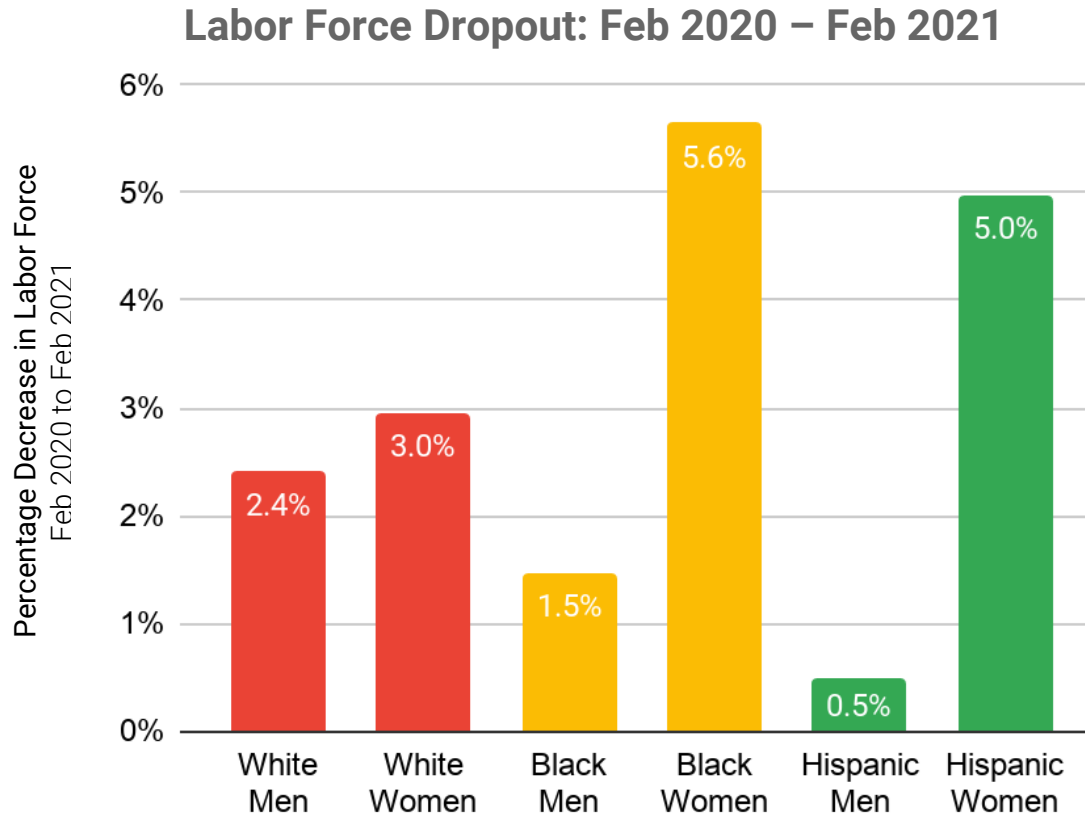


The majority of benefits occur before July 31, 2020, including the CARES Act one-time stimulus and \$600 additional weekly unemployment benefit. With funding from FEMA, Michigan adds a \$300 weekly benefit from August to December.

Unemployment compensation extends to March 14, 2021. Usually lasting 26 weeks, unemployment compensation has been extended twice. Once for an 13 weeks until December 31, 2020, and then again for an additional 11 weeks until March 14, 2021. The first 11 weeks of 2021 come with a \$300 weekly enhancement to unemployment benefit.

Labor Force Impacts

These effects have varied by gender and race.



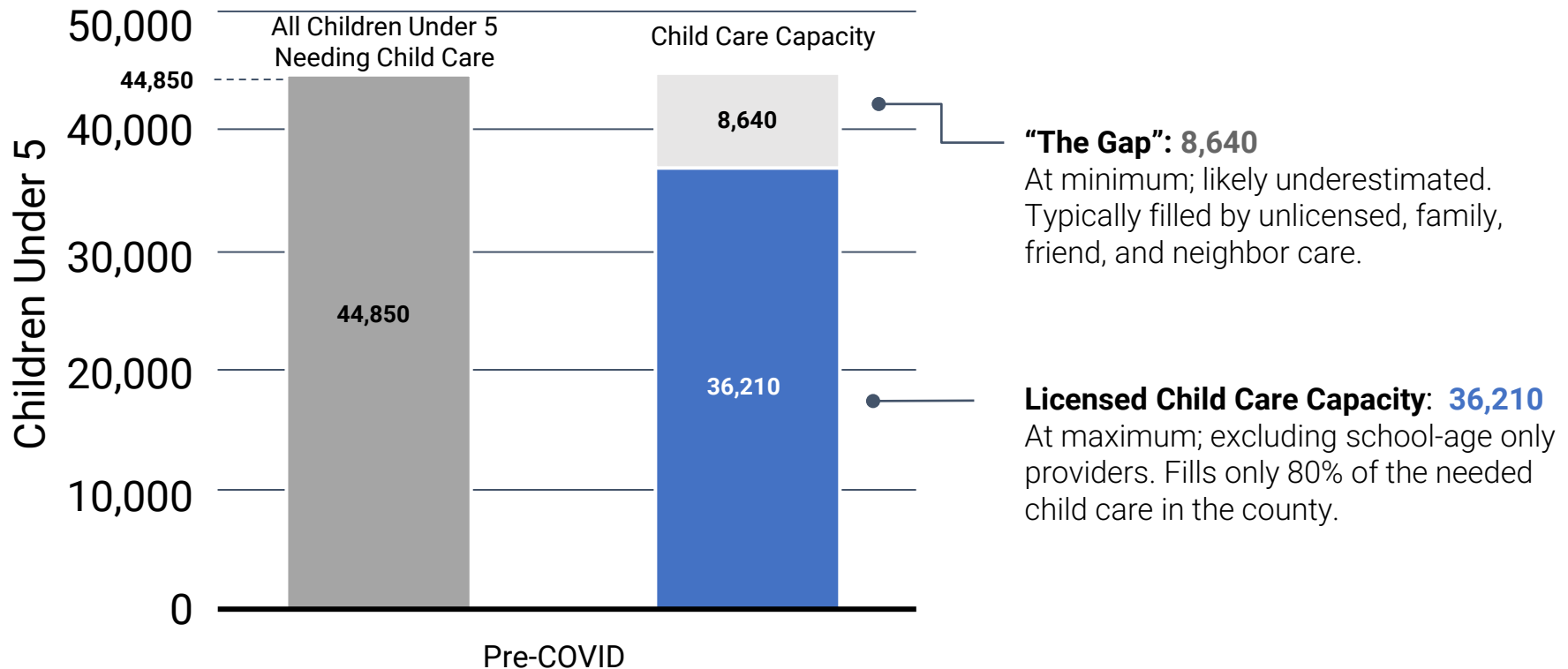
Source: BLS

Even before COVID-19,
child care was critical
for the economy to function.



Child Care Need & Capacity, Pittsburgh Region

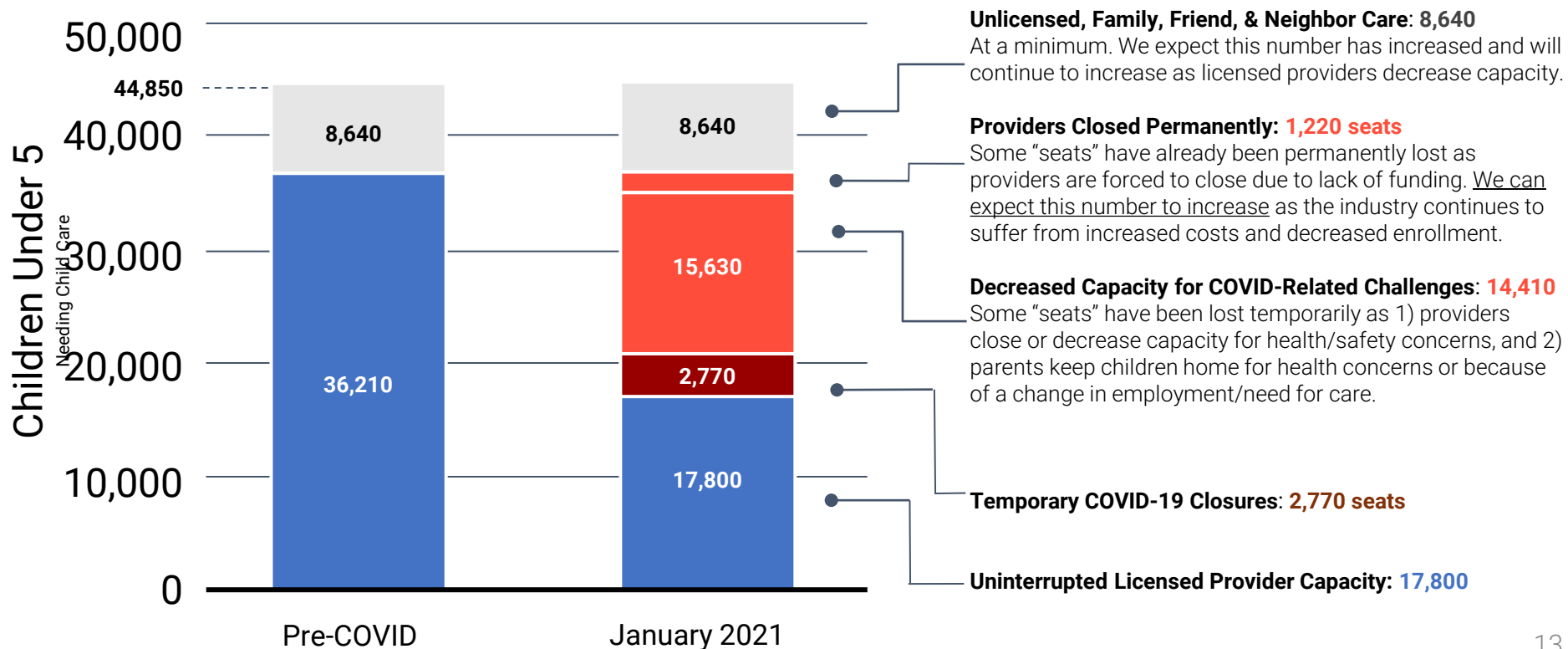
Even before COVID-19, there was a gap in licensed child care for children under the age of 5.



Sources: PA Partnerships for Children & PA Department of Human Services (July 2020)

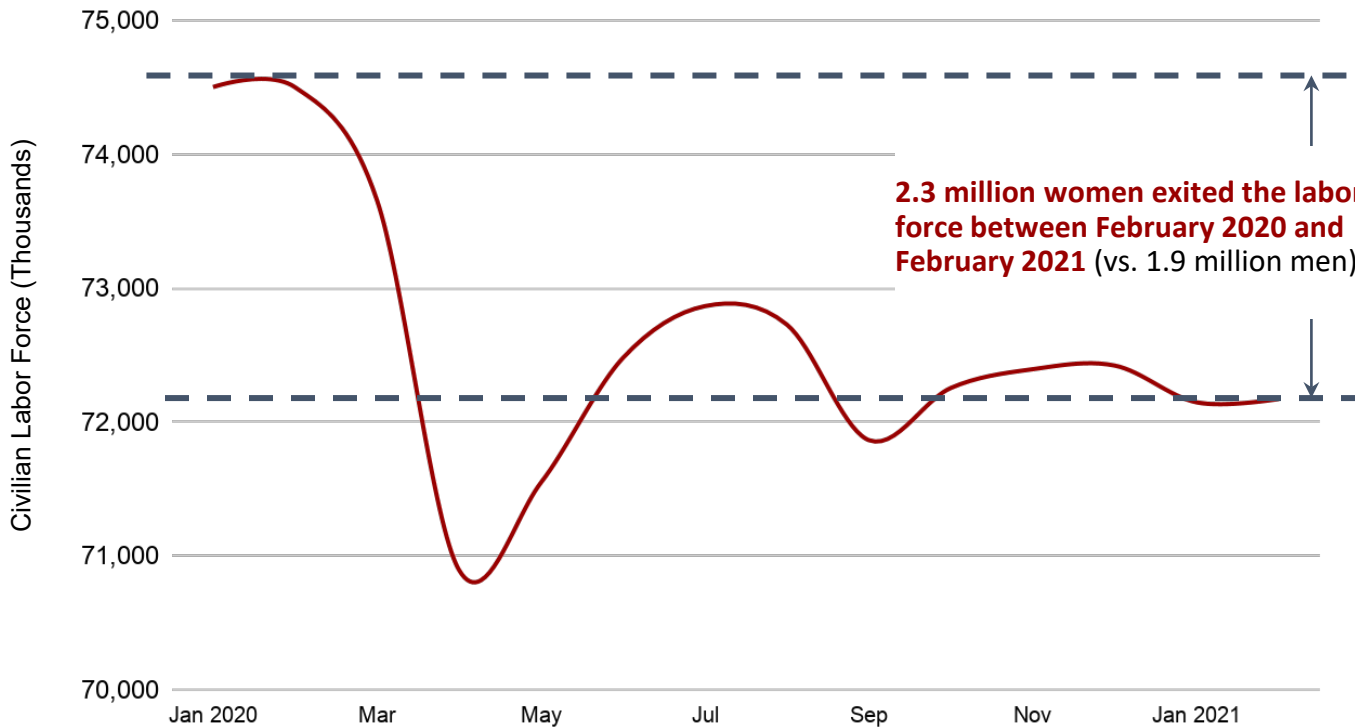
COVID's Impacts on Child Care in the Pittsburgh Region

COVID is causing dips in licensed child care capacity – with declines as high as 50%.



Sources: PA Partnerships for Children & PA Department of Human Services with Trying Together January updates & 4E analysis. Numbers are estimates.

Women's Labor Force Participation, National



In February 2021, women's labor force participation rate was **57%** (vs. 69.6% for men).

Before the pandemic, the last time women's labor force participation rate was this low was in 1988.

Impacts have been particularly extreme for Black and Latina women.

Sources: BLS, Data Table A-1. Figure is seasonally adjusted. Women 20 and over. | [National Women's Law Center](#)

Remote Work

Shifts in commuting

Map: Change in Daytime Population

-20,500 workers, a loss of -14%

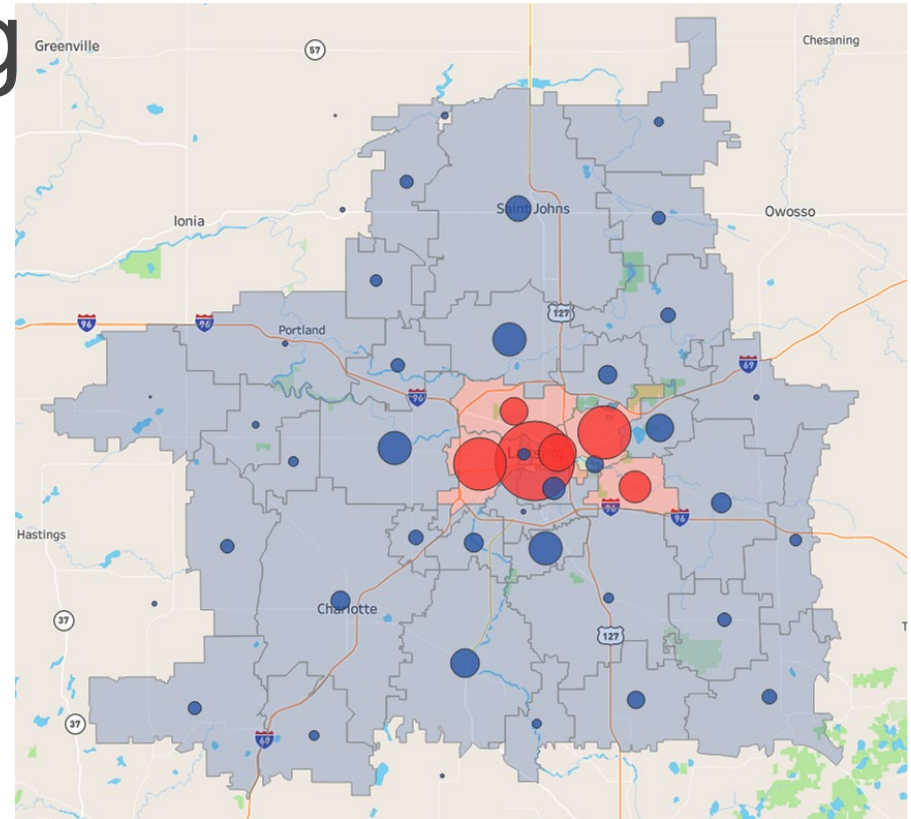
The six zip codes in the region that have a lower daytime population saw a decrease in daytime population of -20,500, a loss of -14%.

+14,700 workers, a gain of +21%

The suburban and rural areas of the region that gained daytime population gained +14,700 workers, +21% increase of pre-pandemic levels.

-5,800 in daytime population

The three county planning region see an overall loss of -5,800 in daytime population.



● Loss in daytime population

● Gain in daytime population

Source: Based on modeling the Change in Daytime Population by Fourth Economy, includes BLS Job Flexibilities and Work Schedule data, 2020-2018 and Census Longitudinal Employment Household Dynamics data, 2018

Impacts on Main street small businesses

in zip C0des with loss in commuting

Small businesses within retail, accommodation and food, arts, entertainment, and rec., and other services industries in the 6 ZIP Codes losing commuters.



-14%

Change in Demand

If all workers who could work remotely work remotely, these six ZIP Codes would see a shift of commuters of -20,500, a loss of -14%.



-\$25.8 M

Monthly Sales

With a -14% decrease in sales, these main street businesses would lose an estimated \$25.8 million in monthly sales.



2,000

Workers

This demand decrease could impact 2,000 workers, using a sales per worker estimate from the Economic Census.

Source: Census Longitudinal Employment Household Dynamics data with Quarterly Workforce Indicators used to estimate small business employment and number of small business, and Economic Census Data to estimate sales.

Thanks!

Questions?

Contact Rich Overmoyer:

■ rovermoyer@fourtheconomy.com

■ 412-251-1607

Data Resources

[PA211.org](https://pa211.org) - 211 call data by community

[Stats America](https://statsamerica.com) - Economic Development focus

[Western PA Regional Data Center](https://westernpa.org/data-center) - an overgrowing library of local and regional data

[Policy Map](https://policymap.com) - a treasure trove of data across sectors (subscription)

[US Census](https://data.census.gov) - easy to use visualizations

[Fourth Economy Community Index](https://fourth.economy.com) - compare every US County across 20 indicators

Data as a Tool for Change

Bobbi Watt Geer, Ph.D.

President & CEO

United Way of Southwestern PA

THE ARC OF DATA

- **Data Collection/Dissemination**

- Community Pulse Reports
- 211

- **Reflection/Making Meaning**

- The Question Before Us
- Impact Cabinet & Board Consideration
- Equity Concerns: Race, Gender and Ability

- **Action**

- 211 Food Security
- Children's well being
- Racial disparities in COVID

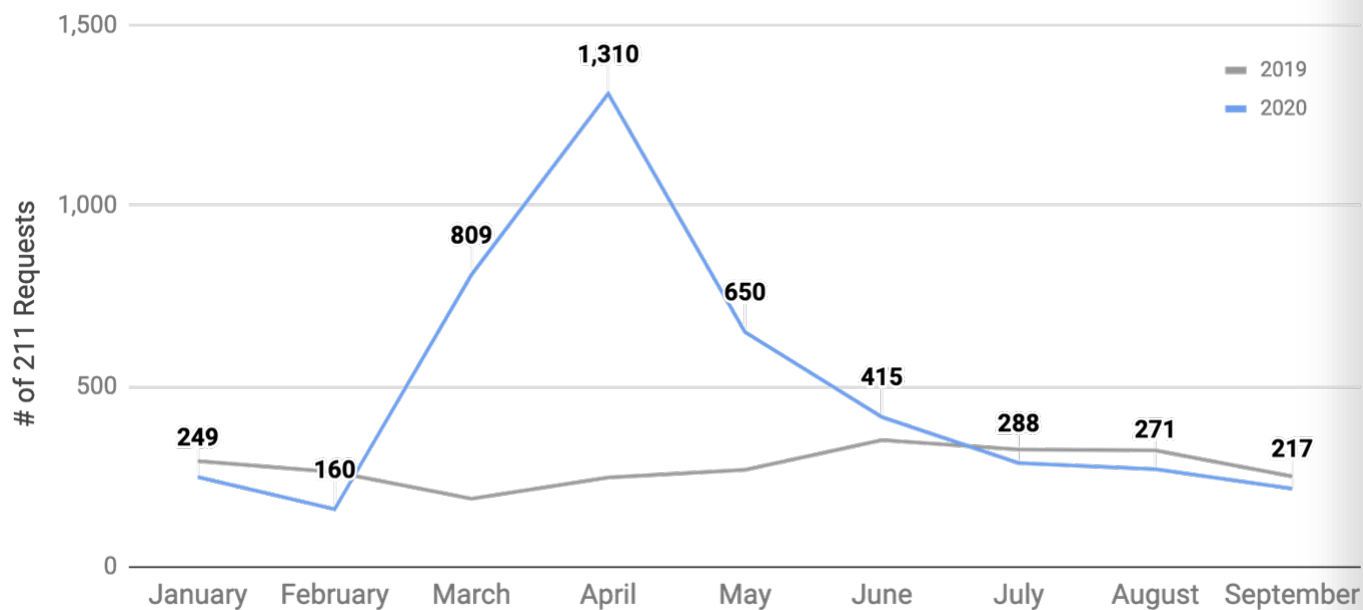
COVID-19: Transformational Moment for the use of Data @United Way

- Triple Crisis: Pandemic, Economic & Racial Justice at once
- Accelerated & made urgent our relationship with data
- Data to drive our mobilization, raise up issues, engage, invest & problem solve
- Take a pause to inventory data sources we have, what we did not have, what we could get & how
- Engagement of our governing board



2:1:1

Get Connected. Get Help.™



From the time period of March 15 to September 31, food requests were 107% higher in 2020 than they were in 2019.

The number of requests have continued to go down since their peak in April, but we will want to keep a close eye on what happens in October when many unemployment benefits will have been depleted.

October 2020

COMMUNITY PULSE REPORT



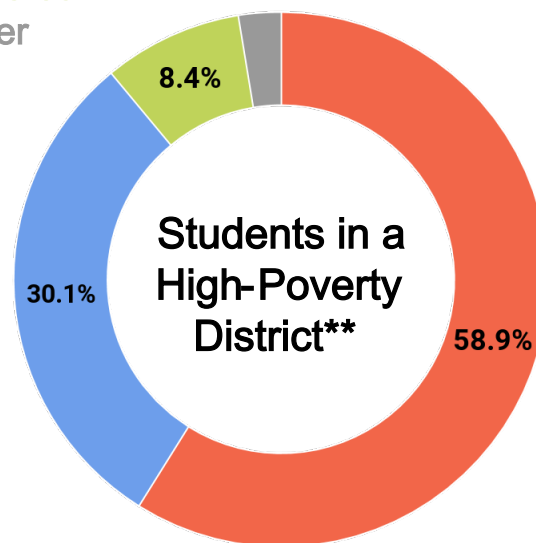
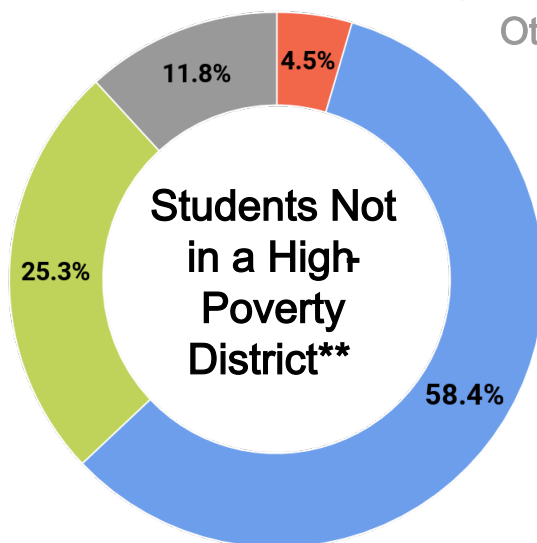
ALLIES
FOR CHILDREN

Source: Source: PA 211 Counts. "Region" includes Allegheny, Armstrong, Butler, Fayette, and Westmoreland Counties



Learning Model
(District Recommendation)*:

Full Remote
Blended, Hybrid
Full In-Person
Other



Although most students are currently attending schools that are employing a blended, hybrid model of learning, **students in districts with higher rates of child poverty are more likely to be attending schools that are employing full remote models of learning.**

*Note: All districts have a virtual/remote option. Schools represented are public schools only.

**High-Poverty refers to a district with a child poverty rate greater than or equal to 16.8%, PA's 2018 child poverty rate.

October 2020

Sources: PA Schools Work, PDE 2019-2020 enrollment, Allies for Children. Counties included: Allegheny, Armstrong, Butler, Fayette, Westmoreland.

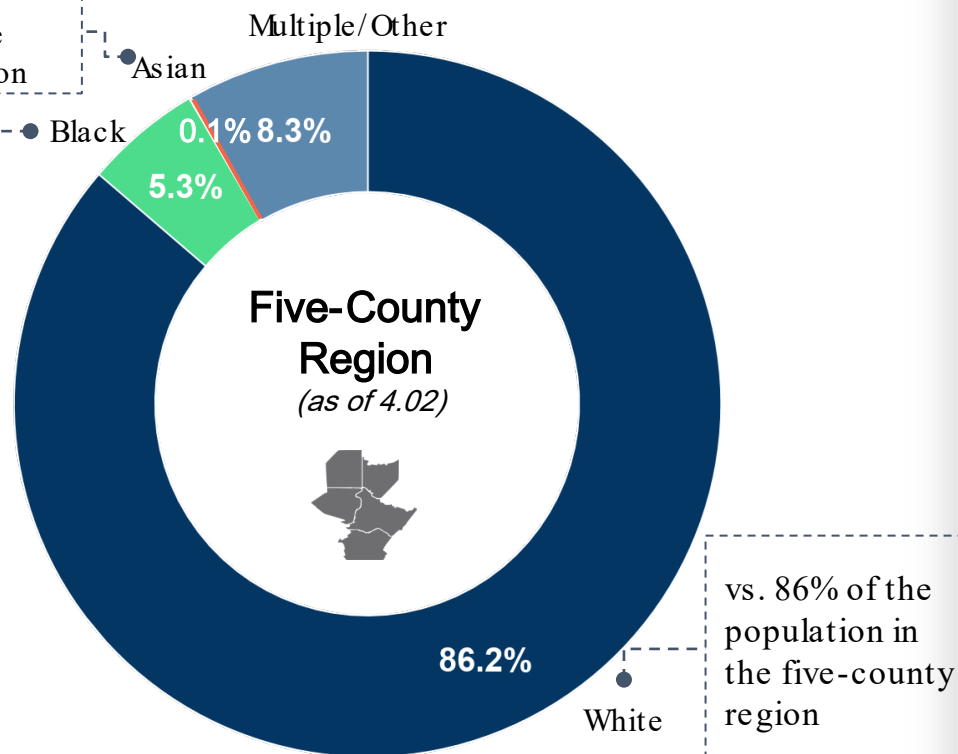


COVID-19 Vaccinations by (Known) Race



vs. 3% of the population in the five-county region

vs. 9% of the population in the five-county region



vs. 86% of the population in the five-county region

White adults in the region are being vaccinated at higher rates than Black and Asian adults, despite Black people being overrepresented in COVID-19 deaths.

Vaccinations for “Unknown” race are not pictured here. Thanks to advocacy and action from public officials, this number has declined significantly, from almost 30% in February to 14% in April, statewide.

April 2021

Source: [Pennsylvania Department of Health](#) At least one dose. “Other” includes “Multiple,” Pacific Islander, and Native American. Population numbers from Census ACS 2014 year estimates.



ALLIES
FOR CHILDREN

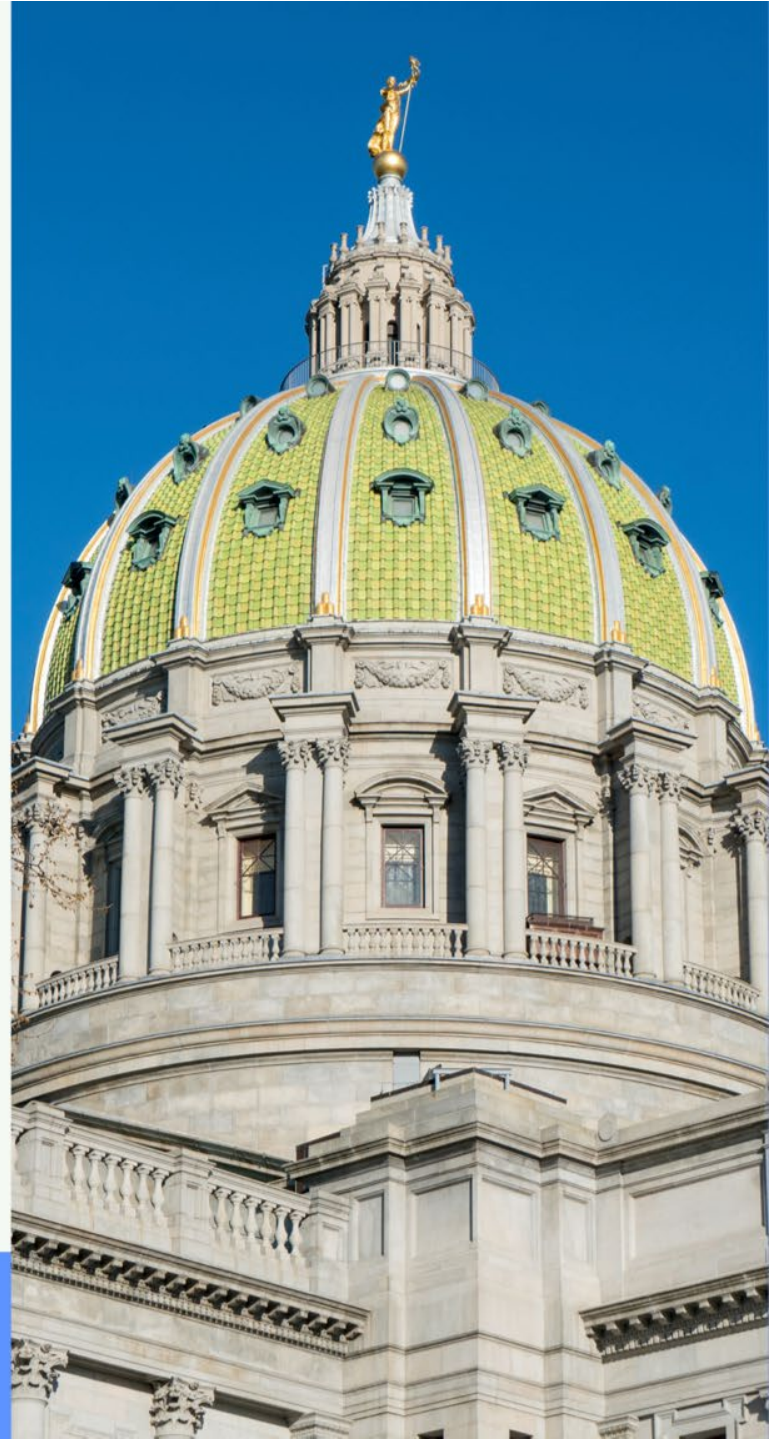
COMMUNITY PULSE REPORT



Be the Change
by beamdata

Nonprofit data as a tool for advocacy

Bhavini Patel
Cofounder & CEO





Be the Change
by beamdata

Facts about the PA Legislature



Be the Change
by beamdata

PA is a full-time legislature.

PA enacted 140 laws last year, and only 27 of them addressed COVID-19.

US News ranked PA 41 in measure of how states are performing for their citizens.



Be the Change
by beamdata

Sharing nonprofit stories as community-generated data can help forward your advocacy mission.



Be the Change
by beamdata

Legislators legislate by serving your needs
and listening to your concerns.



Be the Change
by beamdata

Bills should be reflective of what's happening in the community and you can be a good source of knowledge.



Be the Change
by beamdata

Legislators don't often hear from constituents on a regular basis unless there's a controversial issue getting media attention.

List View **Map View**

Filter



 **Sign Out**



Your Elected Officials



Summer Lee
State House
District 34



Jay Costa
State Senate
District 43



Be the Change
by beamdata

Contact

Bhavini Patel
info@beam-data.com

Visit Be the Change
www.changeourstate.com



www.ChangeOurState.com

The 7th Annual

JEFFERSON FORUM

Jefferson
Regional
Foundation

Embracing Transformation

Transforming Data – Data as a Tool
for Change

Conclusion By Colleen Cadman

Community Engagement Manager,
Jefferson Regional Foundation

Continuing Education Credits

The Jefferson Forum is offered for up to **16 hours of social work continuing education** through co-sponsorship of the University of Pittsburgh's School of Social Work, a Council on Social Work Education accredited school and therefore a PA pre-approved provider of social work continuing education.

You will be contacted by Jefferson Regional Foundation Staff at the conclusion of the Forum in early June to confirm your credits. YOU MUST COMPLETE THE FINAL FORUM SURVEY to be eligible!



Your Feedback is Important to Us!

Complete a 2 minute survey at:

<https://www.surveymonkey.com/r/5B5GFYY>

**Thank you for joining us for the
Jefferson Forum!**

