

The 8th Annual **JEFFERSON FORUM**

NAVIGATING THE UNKNOWN

WELCOME

Over the past two years, the world has been navigating unknown territory. We have all adapted to meet new and shifting demands and created new ways of operating in our professional and personal lives. What lies beyond the “big shift?” Where are possibilities and opportunities where we might not have seen them before? The Jefferson Regional Foundation invites you to take flight and navigate the unknown, embracing changes that frame our daily lives with unity and ingenuity.

MAY 5, 2022
CROWNE PLAZA
PITTSBURGH SOUTH

Jefferson
Regional
Foundation

The 8th Annual JEFFERSON FORUM

Welcome! We're so glad you're here.

Thank you for participating in the 8th Annual Jefferson Forum – an exciting opportunity to learn, network and work collaboratively to recognize and inspire resilience in the Jefferson area.

FORUM AGENDA

8:15-8:45am Registration and Buffet Breakfast (Lobby – Mission Control)

- Share how you are “Navigating the Unknown” at the Ya Momz House video booth
- Sign your organization up to participate as a Voter Engagement Champion
- Visit the breakfast buffet
- Make new connections and dock at your table

8:45-9:00am Welcome and Introduction (Main Ballroom – Mother Ship)

Mary Phan-Gruber, CEO, Jefferson Regional Foundation

9:00-10:00am Keynote Speaker – Exploration, Change and Uncertainty (Main Ballroom – Mother Ship)

Introduced by Danny Vereb, Community Engagement Manager, Jefferson Regional Foundation

Dr. Jay Apt, Professor Carnegie Mellon University's Tepper School of Business and Department of Engineering and Public Policy; Former NASA astronaut – completed four shuttle missions.

10:00-10:15am Group Networking and Refuel (Lobby – Mission Control)

- Share how you are “Navigating the Unknown” at the Ya Momz House video booth
- Sign your organization up to participate as a Voter Engagement Champion
- Network to Navigate
- Snack break

10:15-11:30am Workshop Pods – See your nametag for assignment

- Navigating DEI in the Workplace – *Keystone*
- Navigating Civic Engagement and Why It Matters – *Baldwin*
- Navigating Government Funding – *Carnegie*
- Navigating the Future of Work – *Allegheny Room*
- Navigating Communications – *Duquesne*

Media Consent: Please note that photos will be taken at today's event for use in Forum and Jefferson Regional Foundation marketing materials. As a registered Forum participant, you have consented to appearing in any general event photos taken today. If you choose to decline, please stop at the registration table and sign a declination form.

The 8th Annual JEFFERSON FORUM

FORUM AGENDA, *continued from previous page*

10:15-11:35am 1:1 Coaching (Throughout Lobby – Check in with Mission Control)

- Tim Hinds, CEO, Trailblaze Creative
Improving Nonprofit Communication Strategies and Branding
- Liz Monk, Community Engagement and Special Projects, Western Pennsylvania Regional Data Center (WPRDC)
Using Public Data in Your Program and Grants
- Susan Chase, President, Open Minds LLC
Evaluation and Outcomes - Making it Clear!
- Cindy Leonard, CEO, Cindy Leonard Consulting
Technology Strategies for Your Organization
- Lucille Dabney, President & CEO, Program to Aid Citizen Enterprise (PACE)
Small Organizations, Big Impact

**COACHING
SESSIONS FULL**

11:30-11:45am Group Networking and Refuel (Lobby – Mission Control)

- Share how you are “Navigating the Unknown” at the Ya Momz House video booth
- Sign your organization up to participate as a Voter Engagement Champion
- Network to Navigate

11:45-12:45pm Lunch with Your Crew (Main Ballroom – Mother Ship)

- Afternoon Mission
Danny Vereb, Community Engagement Manager, Jefferson Regional Foundation

12:45-1:45pm Activity Pods *You will be attending with your Crew (Apollo, Gemini, Mercury, Ulysses, Viking or Voyager)*

- Navigating Digital Fabrication with Carnegie Science Center’s Mobile FabLab – **Baldwin**
- Exploring Virtual Reality: Collaborative Painting with CMU’s Big Mixed Reality Team – **Harrisburg**
- Navigating Geocaching with Venture Outdoors – **Doors of Mission Control – Lobby**
- Moving Through Change with Attack Theatre – **Allegheny Room**
- Improvising Through the Unknown with Arcade Theater – **Carnegie**
- Exploring Rhythmic Mindfulness Through Body Percussion with Center of Life – **Duquesne**

The 8th Annual JEFFERSON FORUM

FORUM AGENDA, *continued from previous page*

12:45-1:45pm 1:1 Coaching (Throughout Lobby – Check in with Mission Control)

You will have access to the same talented coaches as offered during the morning session.

**COACHING
SESSIONS FULL**

1:45-2:00pm Group Networking and Refuel (Lobby – Mission Control)

- Share how you are “Navigating the Unknown” at the Ya Momz House video booth
- Sign your organization up to participate as a Voter Engagement Champion
- Network to navigate
- Snack break

2:00-2:45pm Jefferson Café (Main Ballroom – Mother Ship)

- An open conversation time with Table Topics selected and hosted by Forum participants!
- Dessert served

2:45-3:00pm Forum Wrap-Up (Main Ballroom – Mother Ship)

- Navigating the Unknown video collage with Ya Momz House
- Final Remarks

Kelleigh Boland, Director of Strategy and Grantmaking, Jefferson Regional Foundation

Share How You are Navigating the Unknown at the Ya Momz House Video Booth

We want to hear from you! Please consider participating in our Video Booth today in the Lobby - Mission Control. We are collecting video content from you on-site throughout the morning and early afternoon, then editing and unveiling a video collage during the Forum Wrap-Up with all of your commentary. This is a great way to hear from you and your colleagues and a video experience you will not want to miss. Please consider the below questions as you get ready for your close-up:

1. What gives you confidence and competence to continue to move into the unknown?
2. Why is it important to attend a Forum?
3. What is the value of the Jefferson Collaborative?
4. What is the power of the nonprofit sector? How will that help our community move forward?



Jefferson Votes – A Voter Engagement Initiative

Nonprofit organizations serve as trusted resources for community members to strengthen their voice through voter engagement. The Jefferson Collaborative is excited to provide targeted, nonpartisan resources and training for organizations leading up to the November 8 general election as part of the Jefferson Votes campaign. Join with Collaborative organizations to become informed and to consider one or many simple actions to be a Voter Engagement Champion. Simply complete the Action Form (PURPLE) in your folder to indicate your interest in learning more about voter engagement or find out how you can become a Voter Engagement Champion at the Jefferson Collaborative Table.



The 8th Annual JEFFERSON FORUM

OUR KEYNOTE SPEAKER

Dr. Jay Apt — Exploration, Change and Uncertainty



Jay Apt trained for six years before his first spaceflight on which he was faced with an emergency repair of a satellite fraught with uncertainties. On each of his four shuttle missions there were unknowns that required teamwork and adapting to change. After NASA, he led a turnaround of a large research organization that was possible only by keeping a clear view of the objective in the face of change. He will share his experiences in negotiating unknown territory and finding the capacity within to thrive in an era of change.

Jay Apt graduated from Harvard in 1971 with a bachelor's degree in physics. He completed his Ph.D. in experimental atomic physics at MIT and in 1976 joined the Center for Earth and Planetary Physics at Harvard, studying the weather on Venus. He later directed the observatory at NASA's Jet Propulsion Lab in Pasadena, and worked in NASA's mission control center in Houston.

Dr. Apt has spent more than 847 hours in space, on four Space Shuttle missions, and performed two space walks. He has been to the Russian space station Mir, and is the recipient of NASA's highest honor, the Distinguished Service Medal.

He is a pilot and aircraft owner with over 6,000 hours of experience in more than 25 types of aircraft, sailplanes, and human-powered aircraft. He has flown single-engine aircraft to Greenland, Iceland, Europe, Alaska, and Central America.

An award-winning photographer, Apt shares his images and knowledge of the Earth in Orbit: NASA Astronauts Photograph the Earth, published by the National Geographic Society in 1996, and in softcover in 2003. The book has been printed in eleven languages; more than 600,000 copies are in print.

Dr. Apt is a Professor at Carnegie Mellon University's Tepper School of Business and in the CMU Department of Engineering and Public Policy. He is the Co-Director of the Carnegie Mellon Electricity Industry Center. He has authored over 100 papers in peer-reviewed scientific journals as well as two books and several book chapters. He has published op-ed pieces in the Wall Street Journal, the New York Times and the Washington Post. He is a Fellow of the American Association for the Advancement of Science. He received the Metcalf Lifetime Achievement Award for significant contributions to engineering in 2002.

The 8th Annual JEFFERSON FORUM

FORUM WORKSHOPS

Navigating Diversity, Equity and Inclusion (DEI) in the Workplace – *Keystone*

FACILITATOR: **Danny Vereb**, Community Engagement Manager (Jefferson Regional Foundation)

SPEAKERS: **Godfrey Bethea**, Vice President of Equity, People and Culture, (Greater Pittsburgh Community Food Bank)

Michael Jones, Director of Diversity, Equity and Inclusion (Allegheny Intermediate Unit)

Dr. Angelica Perez-Johnston, Chief Diversity, Equity, and Inclusion Officer (Community College of Allegheny County)

DESCRIPTION: DEI is an important topic among nonprofit organizations. The Jefferson Community Collaborative's DEI survey garnered an 85% response rate from organizations. But what lies beyond the DEI statement and what is necessary for organizations to move forward? How can groups navigate the DEI space to incorporate promising practices into the core of the work and the very fabric of their culture?

Navigating Civic Engagement and Why It Matters – *Baldwin*

FACILITATOR: **Kelleigh Bolland**, Director of Grantmaking and Strategy (Jefferson Regional Foundation)

SPEAKERS: **Maryn Formley**, Executive Chair and Founder (VEEEM Pittsburgh)

Tracy Soska, LSW, Associate Professor Emeritus (Pitt School of Social Work) and immediate past Board President (Allegheny County Library Association)

Randi Vega, Community Engagement Manager (Age-Friendly Greater Pittsburgh)

Laura Wiens, Executive Director (Pittsburghers for Public Transit)

DESCRIPTION: Residents who engage with their community are healthier, more hopeful and feel their voice matters. Even the act of voting has impact. As trusted organizations, the nonprofit sector can play an important role in sharing accurate, nonpartisan information which helps their participants build their civic engagement and a stronger community for all. Local nonprofit leaders will share their tips and insights about the dos and don'ts of these efforts and how you can easily incorporate the promotion of civic engagement into your current practices.

Navigating Government Funding – *Carnegie*

FACILITATOR: **Mary Phan-Gruber**, CEO (Jefferson Regional Foundation)

SPEAKERS: **Amber Farr**, Senior Leader, Program & Provider Services with the Allegheny County Department of Human Services (DHS) Program Offices

Kathy McCauley, Senior Advisor (Allegheny County Department of Human Services)

Johnna Pro, Regional Director of Community Affairs (Pennsylvania Department of Community & Economic Development)

Carol Shrieve, Executive Director (Carnegie of Homestead)

DESCRIPTION: Government funding streams are a great resource to the nonprofit sector, but the applications and process can seem overwhelming. It's easy to see how organizations may not have the time to delve into the specifics related to each funding stream. Who has navigated this road successfully and how did they do it? In this workshop, learn how to better navigate government funding with helpful resources to utilize during the application process.

continued on next page

The 8th Annual JEFFERSON FORUM

FORUM WORKSHOPS, *continued from previous page*

Navigating the Future of Work – Allegheny Room

FACILITATOR: **Steve Ankney**, Research and Data Analyst (Jefferson Regional Foundation)

SPEAKERS: **Carey Harris**, CEO (Literacy Pittsburgh)

Charlene Newkirk, Southeast Regional President (Community College of Allegheny County)

Laura Zinski, CEO (Mon Valley Initiative)

DESCRIPTION: Is hybrid best? What about a four-day work week? From the great resignation to employee retention, how are organizations navigating this new labor market with ingenuity? Learn about the current philosophies around the future of work and how organizations can embrace change to meet the needs of their organizations, staff and participants with dexterity.

Navigating Communications – Duquesne

FACILITATOR: **Caitlin Green**,* Senior Vice President, Head of Marketing and Corporate Communications (ServiceLink)

SPEAKERS: **Aaron Billger**,* Vice President Corporate Communications (Highmark Health)

Khara Timsina, Executive Director (Bhutanese Community Association of Pittsburgh)

Megs Yunn, Founder/ Executive Director (Beverly's Birthdays)

DESCRIPTION: With so many ways to share information, how do you know the best fit for your organization? In this world where content is king, learn how to navigate social media and create a communications policy that effectively aligns with the goals and mission of your organization. A dynamic group of communication professionals and nonprofit leaders will share what they have learned about effective strategies and efficient approaches.

Please be sure to complete your Action Form (PURPLE) and your Evaluation Form (BLUE) in your Forum folder. You can leave these at your table or at the registration table in the Lobby - Mission Control.

* Jefferson Regional Foundation Board of Directors

The 8th Annual JEFFERSON FORUM

Have fun!

Explore new dimensions with our out-of-this world activities. Participants will navigate the unknown with their crew through two thirty-minute activities.

TODAY'S ACTIVITIES

Navigating Digital Fabrication with Carnegie Science Center's Mobile FabLab – Baldwin

We do not know what the future will hold, but we know scientists, engineers, and problem solvers have always found success utilizing different technologies and mindsets. The goal of the Mobile Fab Lab is to navigate unknown problems using 3D printers and Laser Cutters on our mission to 'make makers!'



Exploring Virtual Reality: Collaborative Painting with CMU's Big Mixed Reality Team – Harrisburg

We are going virtual! Participants will use headsets to explore the world of virtual reality. Choose your color and collaborate on the same virtual canvas with your team to create a one-of-a-kind work of art that is out of this world!



Moving Through Change with Attack Theatre – Allegheny Room

Through dance, music and storytelling, participants will rediscover community connections after feelings of isolation through the pandemic. Join Attack Theatre Dance Company in a movement exploration to embrace the present through creativity, offering a fresh eye to life's challenges and opportunities.



Navigating Geocaching with Venture Outdoors – Doors of Mission Control – Lobby

Join Venture Outdoors outside to learn how to navigate the unknown by geocaching. Working in small groups, participants will utilize handheld GPS units to go on a high-tech scavenger hunt around the Crowne Plaza facility in search of clues about the South Hills and Mon Valley region.



Exploring Rhythmic Mindfulness Through Body Percussion with Center of Life – Duquesne

Not your mother's drumming circle. Participants will learn how to access Flow State through Rhythmic Exercises using their own bodies as instruments. With the assistance of a guitarist providing "the heartbeat" attendees will work as a group to synchronize Heart, Body, and Brain through breathing and rhythm techniques.



Improvising Through the Unknown with Arcade Theater – Carnegie

Not everything is a laughing matter, how we prepare ourselves to handle uncertainty is the key. Join Arcade Comedy Theater as they help you face the unknown through the art of Improv comedy. Our 30 minute, highly interactive workshop, will help you prepare for the unexpected, all while having fun and some laughs.



The 8th Annual JEFFERSON FORUM

ABOUT THE JEFFERSON REGIONAL FOUNDATION

Jefferson Regional Foundation

Jefferson Regional Foundation has provided over \$17 million in grant awards to 120 different community organizations in the area since it was funded in March 2013 as part of the affiliation agreement for Jefferson Hospital to become part of the Allegheny Health Network. The Foundation is dedicated to grantmaking in the South Hills and Mon Valley areas of Pittsburgh to address the social determinants of health. It operates three major grant cycles a year and also distributes mini-grants, all of which focus on the following priorities:

- Health and Wellness
- Diversity, Equity and Inclusion
- Workforce and Economic Opportunity
- Civic Engagement and Policy Work
- Early Childhood and Youth Development
- Capacity Building

The Foundation embraces its role in convening, learning and sharing information through its annual community learning event called the Jefferson Forum. The Foundation staffs the Jefferson Community Collaborative, a dynamic and active network of over 100 organizations which hosts larger quarterly meetings and action teams which emerged from the energy and enthusiasm of our first Forum in 2015. This group of change agents is focused on serving

as an incubator for powerful ideas and promising practices, improving the capacity of community-serving organizations, and facilitating group action on community aspirations.

Jefferson Regional Foundation partners with the Collaborative on various community initiatives, which have included Mental Health First Aid Training of 1000 local residents and staff, the Jefferson Counts Census 2020 outreach campaign which engaged dozens of trusted local organizations, and Around the Table South, a community-wide series of conversations over a meal which took place during one week in October 2018 with 1000 participants and will be launched again in the coming months.

The Foundation is also dedicated to sharing local data and resources and is now developing a series of community reports and tools called Surprise in the Suburbs. The Foundation has published Community Snapshots available on its website and hosts the Jefferson Directory, a resource guide to promote referrals and connections among organizations serving local residents.

For additional information, visit the Foundation's website at www.jeffersonrf.org or call 412-990-7111.

The 8th Annual JEFFERSON FORUM

ABOUT THE JEFFERSON COMMUNITY COLLABORATIVE



The Jefferson Community Collaborative was convened in the Fall of 2015, building on the energy and enthusiasm generated by the first Jefferson Forum. The Collaborative is built on the collective strengths of 100+ member organizations, whose vision is to *create agile, healthy, and sustainable communities for diverse populations throughout the Jefferson Region* while:

- serving as an incubator for powerful ideas and promising practices
- improving the capacity of community-serving organizations, and
- facilitating group action on community aspirations.

The Collaborative comes together in full meetings throughout the year and sponsors initiatives including the Jefferson Votes and Jefferson Counts 2020 Census Campaigns, Mental Health First Aid and the Around the Table South community conversation project. In addition to these networking opportunities, issue-oriented Action Teams enable member organizations to work together on cross-sector solutions for key challenges in our communities. Our current focus areas are **Diversity, Equity and Racial Justice** and **Civic and Policy Engagement**.

Diversity, Equity, and Racial Justice Action Team –

This Team has conducted Implicit Bias Training, Racial Wealth Gap Simulations, and produced a DEI Resource Bank to embody the following principles:

1. Celebrating differences
2. Striving for equity and inclusion in the Jefferson Area
3. Championing racial justice

Civic and Policy Engagement Action Team –

This Team has developed a civic and policy engagement plan with the following goals:

1. Education and training of Collaborative members on how to best approach civic and policy engagement
2. Education of elected officials and regulators of the value of the work of members of the Collaborative
3. Providing a collective voice for issues through the Collaborative

For more information, contact **Danny Vereb**, Community Engagement Manager at daniel.vereb@jeffersonrf.org or 412-990-7115.

The 8th Annual JEFFERSON FORUM

JEFFERSON REGIONAL FOUNDATION BOARD OF DIRECTORS

2021-2022

AARON B. BILLGER

Vice President
Corporate Communications Highmark Health

RICHARD F. COLLINS, MD

Retired Chief Medical Officer
Jefferson Hospital

JO DEBOLT

Partner Emeritus
La Piana Consulting

JOHN J. DEMPSTER

Former President/Chief Executive Officer
Jefferson Hospital

GREGORY M. DEVINE

Senior Counsel
Highmark, Inc.

GARY L. EVANS VICE PRESIDENT

Chief Transformation Officer
Microbac Laboratories

TIFFANY EVANS

Dean of Student Development
CCAC South Campus

HELEN FALLON

Emeritus Professor of Journalism
Point Park University

MARK P. GANNON, MD

Chief Medical Officer
Jefferson Hospital/AHN

CAITLIN GREEN

SVP/Head of Marketing & Corporate
Communications ServiceLink

GREGORY A. HARBAUGH

Of Counsel
Houston Harbaugh, PC

EDWARD R. MARASCO SECRETARY

Vice President Business Development
Quick Med Claims

CHARLES R. MODISPACHER PRESIDENT

Retired Certified Public Accountant

MANZOOR MOHIDEEN

Clinical Research Professional Academic
Research Center for Hematology,
Department of Medicine, University of
Pittsburgh

DANIEL A. ONORATO

Executive Vice President, Chief Corporate
Affairs Officer
Highmark Health

FRANCES SMITH-ROHRICH

Sr. Vice-President, PNC Bank Learning
Director of Leadership Development
PNC University

RICHARD W. TALARICO BOARD CHAIR

Partner
The Hawthorne Group

LOUISE URBAN

Sr. VP Operations Greater Pgh. Region
Allegheny Health Network

VIRGINIA WEIDA TREASURER

President
Virginia Weida Designs LLC

Committee Member Only

ERIN ICKES

Senior Vice President & Corporate Counsel
Legal ServiceLink

JEFFERSON REGIONAL FOUNDATION STAFF

MARY PHAN-GRUBER | Chief Executive Officer | mary.phan-gruber@jeffersonrf.org

KELLEIGH BOLAND | Director of Grantmaking and Strategy | kelleigh.boland@jeffersonrf.org

DANIEL VEREB | Community Engagement Manager | daniel.vereb@jeffersonrf.org

STEPHEN ANKNEY | Research and Data Analyst | stephen.ankney@jeffersonrf.org

TYLER WHEELER | Office Manager | tyler.wheeler@jeffersonrf.org

MARISSA WILLSON | Pulse Special Projects Fellow | marissa.willson@jeffersonrf.org

Jefferson Regional Foundation
Whitehall Towers, Suite 301
470 Streets Run Road
Pittsburgh, PA 15236
412-990-7111

The 8th Annual JEFFERSON FORUM

ACKNOWLEDGEMENTS

Special thanks to our important partners in hosting this year's Forum:

Samantha Blair & the team at Crowne Plaza Pittsburgh South

Ryan Greenewald & the Dobil team of audiovisual technicians

Emmai Alaquiva, Liz Speedy & the team at Ya Momz House

Sam Dorsey with Dorsey Design, Inc.

Aaron Gray, Markeya Lowry & the team at PULSE - Pittsburgh Urban Leadership Service Experience

Ben Kusserow & the team at Carnegie Science Center for creating our "Navigating the Unknown" keytags

Jefferson Regional Foundation Board of Directors

Our appreciation to those who helped us navigate the unknown as:

Panelists and Facilitators

Activity Hosts

PULSE Fellow Volunteers

Special thanks to our Vision Council:

AMY ANDERSON

Chief Executive Officer
Allegheny County Library Association

DAMON BETHEA

Community Impact Manager
United Way of Southwestern Pennsylvania

ERIC EWELL

Director of Continuing Education
Penn State Greater Allegheny

JIM GUFFEY

Executive Director
South Hills Interfaith Movement

HANNAH HARDY

Program Manager - Chronic Disease Prevention
Allegheny County Health Department

ABBY HORN

Deputy Director for the Office of Community Services
Allegheny County DHS

SUSAN FRIEDBERG KALSON

CEO
Squirrel Hill Health Center

KELLY KASSAB

Vice President of Operations and Physician Services
Jefferson Hospital

AN LEWIS

Executive Director
Steel Rivers Council of Governments

LYDIA MORIN

Executive Director
CONNECT

CHARLENE NEWKIRK

Southeast President
CCAC

LEAH O'REILLY

Director of Programs
Human Services Center Corporation

LAURA POSKIN

Executive Director
Age-Friendly Greater Pittsburgh

FRAN SHEEDY BOST

Executive Director
TCV Community Services

CAROL SHRIVE

Executive Director
Carnegie of Homestead

JEANNA-MAR SIMMONS

Director of Missions and Outreach
Christ United Methodist Church

KHARA TIMSINA

Executive Director
Bhutanese Community Association of Pittsburgh

JOEY-LINN ULRICH

Chief Operating Officer
Mon Valley Initiative

The 8th Annual JEFFERSON FORUM

SPEAKER BIOS



Godfrey Bethea, Vice President of Equity, People and Culture at Greater Pittsburgh Community Food Bank

In this position, he sets the vision for the Food Bank's equity journey, human resources, and organizational culture; and develops and implements organizational strategy. He also

founded Urban Enterprise to establish a platform to encourage others in urban communities to take control of their own financial wealth. Godfrey has his MBA from Waynesburg University, and the AIRS Certified Diversity Recruiting Certification, and Cultural Diversity Train-the-Trainer Certification.

Pronouns: He/Him

Contact: gbethea@pittsburghfoodbank.org



Aaron Billger, Vice President, Internal and External Communications for Highmark Health

Aaron serves as Highmark Health Plan's chief spokesperson and his responsibilities include oversight of news media relations, issues management, thought leadership, storytelling and internal

communications – positioning Highmark Blue Cross Blue Shield as a local, regional and national industry leader. He also is a board member of the Jefferson Regional Foundation and serves on the Foundation's Grants Committee. Aaron has a BA in Communications from Susquehanna University, where he still serves on the Alumni Board today.

Pronouns: He/Him

Contact: aaron.billger@highmarkhealth.org



Amber Farr, Senior Leader, Program & Provider Services with the Allegheny County Department of Human Services (DHS) Program Offices.

As the former director, One Northside, Amber shaped Buhl's grant making agenda to improve the quality of life for all Northside residents. In addition to her work at the foun-

ation, Amber co-launched CoLab18 – a community-based innovation center. Amber serves on numerous boards and volunteers for organizations such as: The Greater Pittsburgh Community Food Bank, Riverside Center for Innovation, Community College of Allegheny County, Steel Smiling, The Best of the Batch Foundation, Southwestern Pennsylvania Partnership for Aging, Greater Pittsburgh Literacy Council. Amber earned a bachelor's degree from Temple University, a master's degree from Point Park University, and executive leadership certificates from Carnegie Mellon University.

Pronouns: She/Her

Contact: Amber.Farr@AlleghenyCounty.US



Maryn Formley, KIDS Operations Lead at Allegheny County Department of Human Services and the Founder of VEEM Pittsburgh

VEEEM Pittsburgh is a faith-based, nonpartisan community organization dedicated to increasing voter turnout in the Greater Pittsburgh area.

Maryn has over 20 years of experience working in the government administration industry. Maryn has her MS in Leadership, Information Technology from Duquesne University.

Pronouns: She/Her

Contact: veempittsburgh@gmail.com

continued on next page



Caitlin Green, Sr. Vice President and Head of Marketing & Corporate Communications at ServiceLink

ServiceLink is a mortgage services and technology provider. Caitlin oversees all marketing, public relations, and corporate communications functions. In addition to her dedication to diversity in the workplace,

Caitlin focuses her time on social justice, equity in the arts, and the advancement of women & girls, and serves on several nonprofit boards. Caitlin is a board member of the Jefferson Regional Foundation and serves on the Foundation's Grants Committee. Caitlin has her BS in Non-fiction English Writing and Business from the University of Pittsburgh.

Pronouns: She/Her

Contact: Caitlin.Green@svclnk.com



Carey Harris, CEO of Literacy Pittsburgh, the largest provider of adult basic education in Allegheny and Beaver Counties.

Carey brings more than 25 years of nonprofit leadership experience in education, policy, and community development at the local, regional, and state level. Prior to her current role she

served as Executive Director of the Pennsylvania Early Learning Investment Commission. She also serves on a number of state and local boards and committees. Carey has a Master of Social Work and Master of Public and International Affairs from the University of Pittsburgh.

Pronouns: She/Her

Contact: charris@literacypittsburgh.org



Michael Jones, AIU's Director of Diversity, Equity and Inclusion (DEI)

Michael is responsible for the design and implementation of meaningful organization-wide DEI efforts that help shape a healthy and inclusive culture where everyone can grow and thrive. He also serves school districts

and delivers DEI learning opportunities to educators in Allegheny County. Michael has a BM in Music Therapy from Seton Hill University and a Masters in Social Work from California University of Pennsylvania.

Pronouns: He/Him

Contact: michael.jones@aiu3.net



Kathy McCauley, Senior Advisor to the Director of DHS, after having served as the organization's Chief Planning Officer

She joined DHS in 2016 after over 20 years as an independent consultant to local government and community organizations. Kathy began her work in the

region as the Executive Director of Allegheny County's Private Industry Council, and later worked as the Research Coordinator for the Community Health section of Children's Hospital of Pittsburgh. Her grant writing then and since has raised over \$100 million for nonprofit organizations through nearly 200 separate applications. She is a graduate of the University of Pittsburgh and Carnegie Mellon University's Heinz College.

Pronouns: She/Her

Contact: Kathy.McCauley@AlleghenyCounty.US



Charlene Newkirk, Southeast Regional President at the Community College of Allegheny County (CCAC)

Charlene has over 30 years of experience in higher-education administration. She is also heavily involved in her community, serving as Board Member for both the Human

Services Center Corporation and Jefferson Regional Hospital. She is a founding member of the Sustainability Task Force for the SEED Center of AACC; a member of the Mon Valley Providers Council Strategic Planning Council; and a member of the Global Education Commission. Charlene received her BA in English from Oberlin College and a JD from the University of Pittsburgh School of Law.

Pronouns: She/Her

Contact: cnewkirk@ccac.edu



Johnna A. Pro, Southwest Regional Director for the Pennsylvania Department of Community & Economic Development

In that capacity, she works with local governments, nonprofits, and small businesses in 12 counties. In 2017, she was the recipient of the Sen. H. John Heinz III Award for

Community Service presented by the Mon Valley Initiative. Johnna is an award-winning reporter, and a former journalism professor and broadcaster with 35 years of experience in media, education, politics and public affairs. She has a BA in Journalism from Indiana University of Pennsylvania.

Pronouns: She/Her

Contact: jopro@pa.gov



Dr. Angelica Perez-Johnston, Chief Diversity, Equity, and Inclusion officer for the Community College of Allegheny County.

Angela's current work focuses on intentional engagement opportunities to ensure that the community college serves those that are within marginalized

identities. Dr. APJ strives to increase the conversation on the breadth of diversity beyond dichotomous perceptions and is committed to action as an imperative in Diversity, Equity, & Inclusion work. Dr. APJ earned her Doctorate in Public Administration from West Chester University of Pennsylvania. She has facilitated workshops and trainings for community organizations, faculty, staff and students on various DEI related topics including racial identity development, unconscious bias, white privilege and allyship.

Pronouns: She/Ella

Contact: aperez-johnston@ccac.edu



Carol Shrieve, Executive Director at Carnegie of Homestead

Carol oversees the library, athletic club, and music hall located in Munhall, Pennsylvania. She had 20 years of marketing and manufacturing management experience before transitioning into the nonprofit sector. Carol attended the Art Institute of

Pittsburgh, Indiana University of Pennsylvania, and Penn State University and holds a degree in communications.

Pronouns: She/Her

Contact: cshrieve@carnegieofhomestead.org



Tracy Soska, Associate Professor Emeritus, and former Director of Continuing Education and chair of the Community Organization and Social Action (COSA) concentration at the University of Pittsburgh School of Social Work, where he is a BASW & MW alumnus. After graduating from the COSA program, himself, Soska

worked in Mon Valley nonprofits during the collapse of the steel industry and collaborated with Pitt faculty studying the social impact of mill closings. This led to his joining the Pitt faculty where he was a leader of Pitt's university community outreach and engagement - Pitt's Community Engagement Award now carries his name. Today, Tracy is active with the Association for Community Organization and Social Action, and with the Allegheny Library Association Board advancing library social work.

Pronouns: He/Him

Contact: tracy.soska@gmail.com



Khara Timsina, Executive Director for the Bhutanese Community Association (BCAP) of Pittsburgh.

Khara has over a decade of experience working in the translation and localization industry. But before his professional career began, he lived in a refugee camp in Nepal

for 17 years, after being forced to leave his home in Bhutan. In late 2009, he moved to Pittsburgh and started volunteering in the growing Bhutanese refugee community. Mr. Timsina was one of eight refugee leaders nationwide to be recognized by the Obama Administration at the White House for efforts in making America more welcoming. Khara's B.E.d was in education and teaching from Tribhuvan University, Nepal.

Pronouns: He/Him

Contact: ktimsina@bcap.us



Randi Vega works part-time for Age-Friendly Greater Pittsburgh as the Community Engagement Manager and UPMC St. Margaret.

She has more than 20 years of management experience in organizational leadership and relationship building. She has previously worked as the Director of Cultural Affairs at

the Baltimore Office of Promotion and the Arts and the Executive Director of the Martha's Vineyard Chamber of Commerce. Randi has a BA in Studio Art from Connecticut College and an MA in Arts Administration from Goucher College.

Pronouns: She/Her

Contact: randi.vega0102@gmail.com



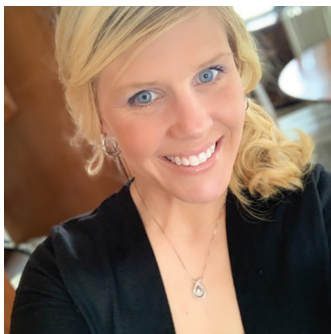
Laura Wiens is the Executive Director of Pittsburghers for Public Transit, an advocacy group that pushes for equal access to mass transit in Allegheny County and beyond.

Laura has been a member of the PPT board since 2013 and has been involved in its resident campaigns to restore bus service

to transit deserts. Laura has her roots in labor organizing with Unite HERE, and draws from her experience recruiting and training leaders in the service industry to mobilize transit riders for equity, access and transparency within our public agencies.

Pronouns: She/Her

Contact: laura@pittsburghforpublictransit.org



Megs Yunn is the Executive Director and Founder of Beverley's Birthdays, a nonprofit organization that provides birthday cheer and critical baby care items for children experiencing homelessness and families in need.

Megs oversees a \$1.8 million budget and seven unique

programs that recognize over 30,000 children/families annually. Her work has been featured locally and nationally, including Good Morning America, The Kelly Clarkson Show, and People. Com. Megs has her MBA from Point Park University and her BA in Communication and Media Studies from Marietta College.

Pronouns: She/Her

Contact: myunn@beverlysbirthdays.org



Laura Zinski, CEO of Mon Valley Initiative (MVI)

MVI works to improve the lives of people in the Mon Valley area by helping to rebuild community infrastructure (primarily housing and commercial spaces) and connecting people seeking new jobs and careers to

employers. Laura has a BA in History from Wheaton College and a MS from Carnegie Mellon University in Public Policy & Non-Profit Management.

Pronouns: She/Her

Contact: lzinski@monvalleyinitiative.com

COACH BIOS

Susan Chase



Susan ('Susie') Chase is the president of Open Minds LLC, which provides strategic planning, program evaluation and project management services. Susie has supported strategic and project planning efforts for a wide range of organizations.

She has published over a dozen peer-reviewed articles on rehabilitation outcomes, assessment approaches, and nonprofit management. Susie has a BA from Allegheny College and a MA from University of Pittsburgh.

Pronouns: She/Her

Contact: chase.susan@gmail.com

Lucille Dabney



Lucille ('Luci') Dabney is the President & CEO at Program to Aid Citizen Enterprise (PACE), a nonprofit management support organization and funder building individual, organizational and community capacity for the greater Pittsburgh region.

Before moving to Pittsburgh, she ran her own consulting firm;

Dabney and Associates. She has over thirty years' experience in nonprofit, corporate, small business, and higher education fields. Lucille has her BBA from University of Michigan and her MBA from University of Houston.

Pronouns: She/Her

Contact: ldabney@pacepgh.org

The 8th Annual JEFFERSON FORUM

COACH BIOS, *continued from previous page*

Tim Hinds



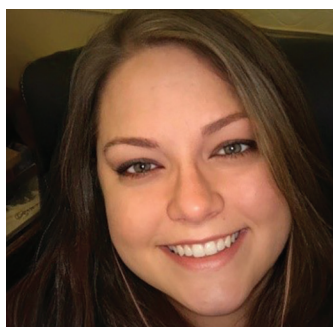
Tim Hinds is the Principal and CEO of TrailBlaze Creative and the humble originator of the Stronger Than Hate logo, which has become an international symbol for resilience following 2018's Tree of Life shooting. He has presented regionally and nationally on topics surrounding

social media, marketing, and branding. His career spans sales, marketing, strategy, nonprofit administration, communications, economic development, entrepreneurship, and grant writing. He has a BA in Communication Arts from Allegheny College.

Pronouns: He/Him

Contact: tim@trailblazecreative.com

Cindy Leonard



Cindy Leonard is the CEO of Cindy Leonard Consulting, which provides consulting and training services to mission-minded organizations with an emphasis on participation, respect, human dignity and results. With a combined 3-decade career, Cindy has over 20 years'

experience working with nonprofit organizations and 10 years with large and small businesses. They are an active community volunteer and have served on a number of boards. They hold a B.S. in computer science, an M.B.A. and a M.Ed. in instructional design technology, all from Seton Hill University.

Pronouns: (They/Them preferred but She/Her also accepted)

Contact: cindy@cindyleonardconsulting.com

Liz Monk



Liz Monk manages Community Engagement and Special Projects at the Western Pennsylvania Regional Data Center (WPRDC) at the University of Pittsburgh Center for Social and Urban Research and is the project manager for Civic Switchboard - a federally

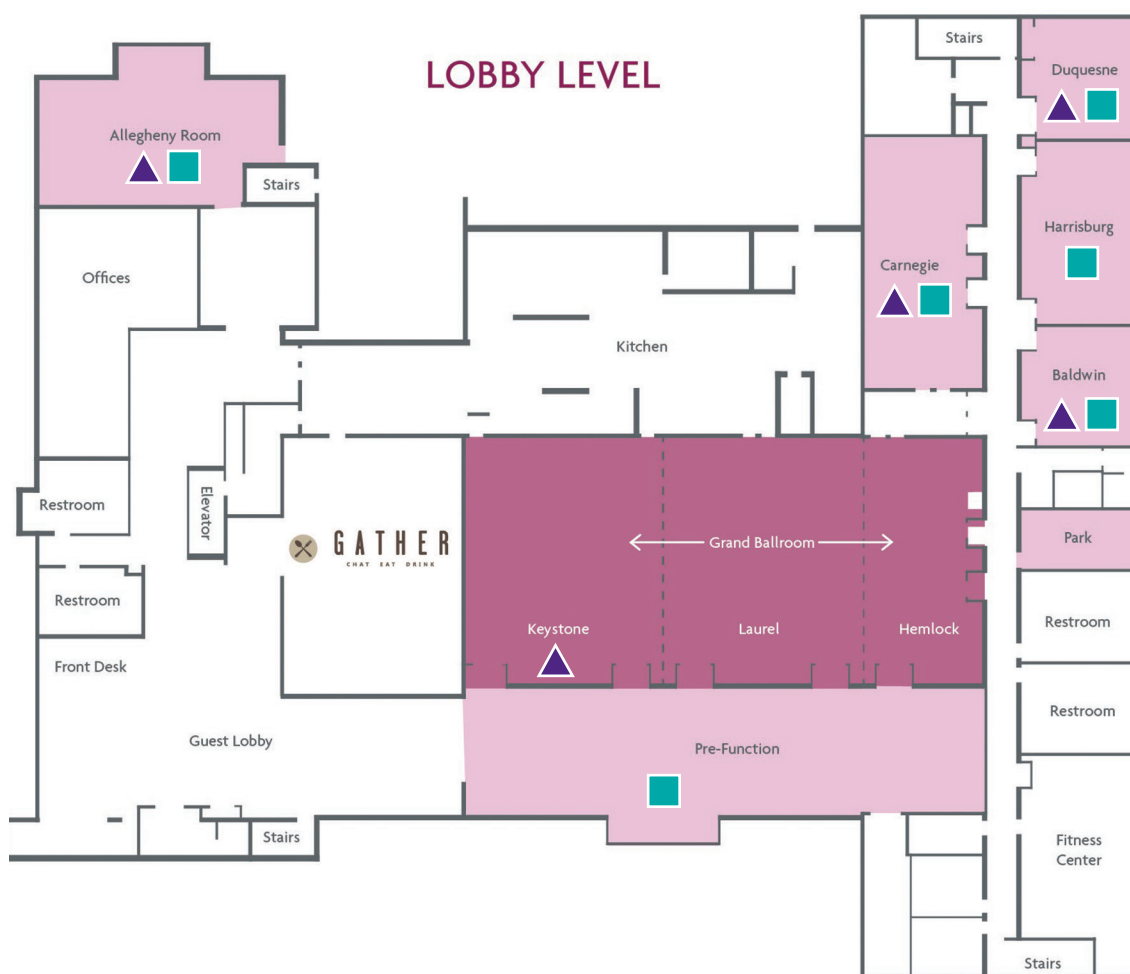
funded project working to connect libraries and community information networks. Before joining the WPRDC, Liz worked in a wide variety of positions in public engagement and sustainable agriculture. Her current interests include exploring alternative ways to communicate and convene around data especially through art and conversation.

Pronouns: She/Her

Contact: monk.e@pitt.edu

The 8th Annual JEFFERSON FORUM

FORUM LOCATIONS



Workshops (▲)

Keystone
Baldwin
Carnegie
Allegheny Room
Duquesne

Activities (■)

Baldwin
Harrisburg
Doors of Mission Control – Lobby
Allegheny Room
Carnegie
Duquesne