

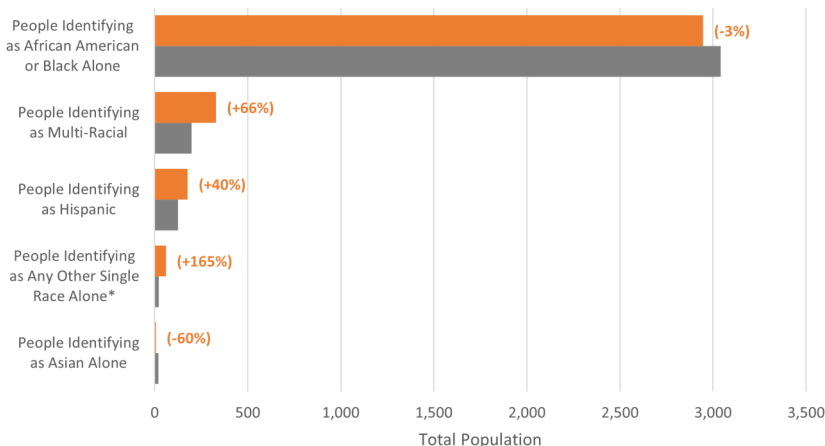
## Community

Population: 5,254

- The Duquesne City total population decreased by 6% from 5,565 in 2010<sup>1</sup>, and represents 2.5% of the total Jefferson area population.
- Similar to the Jefferson region as a whole, the city is experiencing changing racial demographics. The White Alone population decreased by about 20% from 2,157 in 2010 to 1,733 in 2020. **The African American and Black Alone population is the largest demographic group**, comprising almost 56% of the population.<sup>1</sup>
- The population of individuals identifying as Any Other Single Race Alone\* grew by 165% between 2010 and 2020, reflecting trends in the Jefferson area. The Multiracial population also grew by 66%.<sup>1</sup>
- The median age in Duquesne City is 30, younger than Allegheny County (41) and the City of Pittsburgh (33). Of the total population, 12% are under age 5, **31% are under 18 years**, 58% are ages 18-64, and 11% are 65 or and older.

### Changing Diversity in Duquesne City Change in Selected Racial & Ethnic Demographic Populations 2010 to 2020

The population of people who identify as White was 2,157 in 2010 and 1,733 in 2020 for a decrease of 19.7%. The White population is not included in the chart below to maintain readability.

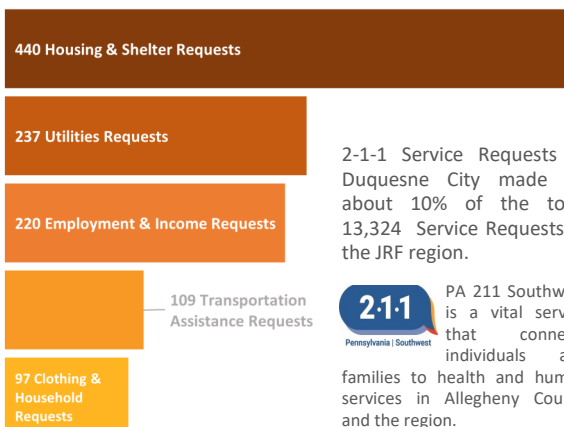


\*Due to small sample size, we have included individuals identifying as Native Hawaiian and Other Pacific Islander, American Indian, or as an identity not listed in the survey ("Other") in *People Identifying as Any Other Single Race Alone*. Note that racial categories are non-Hispanic.

Public Transportation	Median Household Income	College Education	Labor Force	Owner-Occupied Housing
<b>17%</b>	<b>\$35,264</b>	<b>11%</b>	<b>51%</b>	<b>40%</b>
All JRF: 7% Allegheny County: 9% City of Pittsburgh: 17%	All JRF: \$57,879 Allegheny County: \$62,320 City of Pittsburgh: \$50,536	All JRF: 30% Allegheny County: 43% City of Pittsburgh: 45%	All JRF: 63% Allegheny County: 65% City of Pittsburgh: 64%	All JRF: 71% Allegheny County: 64% City of Pittsburgh: 47%
<ul style="list-style-type: none"> <li>17% of population age 16 and over take public transportation to work.</li> <li>51% of workers drive alone with avg. commute time of 30 min.</li> </ul>	<ul style="list-style-type: none"> <li>On average, 56% of families have income below 200% of the federal poverty level (FPL).</li> <li>65% of families under 100% of the FPL are single mother families.</li> </ul>	<ul style="list-style-type: none"> <li>11% of population 25 years old and over has completed a Bachelor's Degree or higher.</li> <li>This represents a slight decrease from 2015 estimates (13%).</li> </ul>	<ul style="list-style-type: none"> <li>51% of residents age 16 and over are in the labor force.</li> <li>The labor force for the city is 49% female, 51% male.</li> </ul>	<ul style="list-style-type: none"> <li>40% of occupied housing units are owner occupied and 60% are renter occupied.</li> <li>73% of housing units are occupied.</li> </ul>

## Services

Top 5 PA 211 Services Requested in Duquesne City\*\*  
Number of Requests for Top 5 Requested Services<sup>2</sup>  
July 2021 to July 2022 (Total Requests=1,354)



2-1-1 Service Requests in Duquesne City made up about 10% of the total 13,324 Service Requests in the JRF region.

**2-1-1** PA 211 Southwest is a vital service that connects individuals and families to health and human services in Allegheny County and the region.

Sources: Unless noted, source is American Community Survey, 5 year estimate (2020)

- United States Census Bureau (2020)
- PA 2-1-1 Counts (2022) \*\*Data is for the 15110 and 15137 zip code.s
- Allegheny County Analytics Human Services Community Profile (2022); Data provided by DHS and local partners.
- LIHEAP data is from DHS / ECIS 2022.09.02 (aggregated data, zip codes data is for 15110.
- Data is from Partner 4 Work
- Data is from Medical Access of Allegheny County (aggregated data, zip codes Data is for 15110)
- Source: Education Data Portal (Version 0.17.0), Urban Institute, accessed 1/23/2023, <https://educationdata.urban.org/documentation/>, madeavailable under the ODC Attribution License

Note: ACS estimates are based on a sample of the population. Margins of error are not included here for simplicity.  
Note: The 2020 U.S. Census utilizes disclosure avoidance processes to ensure confidentiality of the data. Thus, total and racial/ethnic populations are

### Services Provided in Duquesne City

**4,292 Individuals receiving income supports from DHS<sup>3</sup>**

Services may include Supplemental Nutrition Assistance Program (SNAP), Supplemental Security Income (SSI), Temporary Assistance for Needy Families (TANF), Medicaid or receive health insurance through HealthChoices. Data is from 1/1/2022 through 8/1/2022.

**564 Households received utility assistance from LIHEAP<sup>4</sup>**

The Low Income Home Energy Assistance Program (LIHEAP) helps families living on low incomes pay their heating bills. Data is from 10/18/2021 through 6/17/2022.

**359 Homelessness & housing services have been provided by the DHS<sup>3</sup>**

Services are provided by DHS and DHS-contracted providers and include housing assistance, case management, prevention and outreach for individuals and families receiving prevention services, support services and/or housing who are homeless or at risk of becoming homeless. Data is from 1/1/2022 through 8/1/2022.

**286 Individuals received transportation assistance through ACCESS<sup>6</sup>**

ACCESS is a door-to-door, advance reservation, shared-ride transportation program provided throughout Allegheny County. Data is from 7/1/2021 through 6/30/2021.

**15 Individuals receiving Partner 4 Work services<sup>5</sup>**

Title I (WIOA & WIOA Dislocated Workers) includes services that focus on finding jobs and providing more in-depth services such as training programs for adults and dislocated workers. Participants are assigned a case manager and work with that manager to secure an employment position. Data is from 7/1/2021 through 6/30/2021.



University of Pittsburgh  
University Center for Social & Urban Research (UCSUR)

