





# JEFFERSON REGIONAL FOUNDATION: WHO WE ARE

The Jefferson Regional Foundation's footprint encompasses the 26 municipalities served by Jefferson Hospital, located in the South Hills and lower Mon Valley of Pittsburgh.

The Foundation is a convener of people and networks, a source of critical community data, and a grantmaker that invests in the health and vitality of the residents who live in our footprint. But even more than that – we are a committed **neighbor** and **thought partner**, seeking to raise the voices of those who are seldom heard.

**Our Vision:** People and families thriving by building on community strengths.

**Our Mission:** To improve the health and well-being of the communities served by Jefferson Hospital through engagement, community-driven research, and grantmaking.

## TABLE OF CONTENTS

### THEN: The Foundation's First 10 Years

Foundation Milestones .....	4
-----------------------------	---

### TEN: The Foundation Today

A Celebration – and a Charge .....	6
------------------------------------	---

#### ENGAGEMENT

The Community Voice Fund.....	7
Jefferson Community Collaborative .....	7
Meetings Across the Jefferson Service Area .....	8
Collaborative Celebration.....	8
Nonprofits Leading Action.....	8
Jefferson Votes Initiative .....	9
Outcomes .....	9
Jefferson Community Directory .....	9

#### COMMUNITY-DRIVEN RESEARCH

Our Changing Communities.....	10
Data Story Maps.....	10
Community Snapshots .....	11
Technical Assistance for Nonprofit Partners Using Community Data .....	11

#### GRANTMAKING

In Focus: Duquesne University Center for Integrated Health Asthma Project .....	12
In Focus: Melting Pot Ministries.....	13
In Focus: Mon Valley Initiative.....	14

### TIME AHEAD: What Comes Next

Communications Plan .....	15
Refreshing Our Digital Presence and Brand .....	15
Strategic Plan .....	15

#### Fast Facts

Our Board.....	16
Our Staff.....	17
Our New Office & Meeting Space .....	17

Jefferson Regional Foundation Grants for 2022-2023 .....	18
--	----

## Then, Ten, and Time Ahead:

A Letter from CEO Dr. Trisha Gadson and Board Chair Richard W. Talarico

Dear Community Partners,

The past 18 months at the Jefferson Regional Foundation have marked a time of celebration, acknowledging the infrastructure laid and the transformative accomplishments achieved over the Foundation's first ten years, from 2013 through 2023. It has also marked a time of transition due to the September 2022 retirement of founding CEO Mary Phan-Gruber, whose illustrious influence and dedication knows no bounds. And because of our rich history, we are embarking on a time of reflection and planning that will lead us into our second decade of commitment, investment, and partnership with the communities served by AHN Jefferson Hospital.

As a Foundation committed to grantmaking, convening nonprofit partners, and community driven research, we recognize that our diverse footprint — characterized by both enormous communal strengths and multiple vulnerabilities due to limited resources — is positively impacted by the dedicated nonprofit organizations who serve this area. Because our mission is to increase the health and well-being of the Jefferson communities, the focus of our efforts is accomplished by using social determinants of health as a lens. These factors (housing, education, employment, health, and others) determine the overall wellness of individuals and are influenced by the availability of resources where community members work, live, and grow.

This brief report issued to you, our partners, is both documentation of our work and an invitation to join us as thought partners to leverage our shared assets. The theme of our anniversary year, which ranges from March 2023 through March 2024, is **Then, Ten and Time Ahead**. Throughout this report, you will read more about our planning process that centers the voices of the residents of our Mon Valley and South Hills community service area. It is our hope that, together, we can work to equitably meet the needs and value the strengths of our neighbors — all with the goal of promoting a healthy and thriving **community**.

Sincerely,

**Trisha M. Gadson, Ph.D.**

Chief Executive Officer

**Richard W. Talarico**

Board Chair



## THEN: The Foundation's First Ten Years

### FOUNDATION MILESTONES

2013

Highmark and AHN affiliation agreement for Jefferson Regional Medical Center results in the Foundation's transition to **grantmaking**

2019

The Foundation surpasses  
**\$10 million in grants awarded**

***Around the Table South Report*** published, \$28,500 in grants awarded

**Jefferson Counts:** 2020 Census initiative awards \$66,200 in mini-grants

2014

**First grant** awarded

2020

\$500,000 Jefferson **COVID-19 Emergency Fund** launched

Foundation issues public statement: ***Racism is a Public Health Issue***

Foundation-supported **ADA renovations** completed at Carnegie Library of Homestead

2015

**First Community Convening** – 240 participants from 130 organizations

2021

\$700,000 **Jefferson Covid Impact Fund** awarded

**Asthma clinics** open in Clairton, South Allegheny, and Propel Homestead Schools with Foundation support

**Census & Vaccine Data Brief** published

**Jefferson Community Collaborative website** launched

2016

**CCAC South Food Pantry** opens with Foundation support

**Community Snapshot Data Profiles** released

Created **Jefferson Community Directory**

Launch of the **Jefferson Community Collaborative**

2022

**Greater Pittsburgh Community Food Bank** opens Duquesne warehouse expansion with Foundation support

**Jefferson Votes:** Non-partisan voting initiative engages 47 organizations, awards \$13,000 in mini-grants

**Open House** for new Whitehall Towers offices

Founding CEO **Mary Phan-Gruber** retires

Updated digital **Jefferson Community Directory** launched

2018

**Around the Table South:** 1,026 residents gather for community conversations



**DECEMBER  
2022**

The Foundation surpasses  
**\$20 million in grants  
awarded**  
for community impact

**MARCH  
2023**

**Community Voice  
Fund:** \$350,000 awarded to  
15 grantees to elevate  
resident voices

**JUNE  
2023**

With Foundation support, the  
**Western PA Diaper Bank**  
distributes 90,000 diapers to  
450 families at McKeesport event

**JUNE  
2023**

**Our Changing Communities:**  
Interactive data story maps and  
community snapshots released

**SEPTEMBER  
2023**

The Foundation supports  
United Way's Welcome Back  
Summer 2023 **summer youth  
programming** for 800+  
children in the  
JRF footprint

**DECEMBER  
2023**

The Foundation  
launches **new strategic  
and communications  
planning** efforts



# TEN: The Foundation Today

## A CELEBRATION — AND A CHARGE

In April 2023, residents, leaders, grantees, and partners from the communities served by AHN Jefferson Hospital gathered with the Foundation at the hospital to mark a milestone — and an inflection point.

As Chief Executive Officer Dr. Trisha Gadson shared in her remarks, the Jefferson Regional Foundation's 10th anniversary event was "both a celebration and a charge to continue to accomplish important work."

Reflecting on the *Then, Ten, and Time Ahead* theme, Dr. Gadson and her fellow speakers celebrated the accomplishments of the Foundation's first 10 years – including more than \$20 million in grants to improve health and wellbeing — and laid out a community-driven vision for the work ahead.



*Jefferson Regional Foundation past and present staff and Board members*



*PA Lt. Governor Austin Davis*

Joining Dr. Gadson and Board Chair Richard Talarico at the podium was special guest Lt. Governor Austin Davis, a McKeesport native who saw the Foundation's impact firsthand during his two terms as State Representative. He reflected on the "strong voice" JRF offers the communities it serves, a sentiment also shared in proclamations from State Senators Jim Brewster and Devlin Robinson read by their staff.

The event also spotlighted the legacy and tireless work of founding CEO Mary Phan-Gruber, who retired in September 2022. Phan-Gruber was honored along with the inaugural board members who helped guide the Foundation from its inception to today. That legacy was further explored in a [special tenth anniversary video screened at the event.](#)

In short, the 10th anniversary event was a chance to honor, reflect on, and recommit to the Jefferson Regional Foundation's guiding mission:

***To improve the health and well-being of the communities served by Jefferson Hospital through engagement, community-driven research, and grantmaking.***



## The Community Voice Fund

Who better to understand the needs of a community than those who live there?

The **Community Voice Fund**, announced in the leadup to the Foundation's 10th anniversary, is a unique effort to raise the voices of residents in the Jefferson service area — those who best know its history, neighborhoods, and challenges — and to nurture and elevate their work.

The Fund encouraged partners to convene residents and stakeholders to identify challenges in their communities and propose immediate and long-term action plans to improve health and well-being. Grant requests up to \$35,000 were accepted for a total of \$350,000.



## Jefferson Community Collaborative



The **Jefferson Community Collaborative**, an initiative and investment of the Jefferson Regional Foundation, is a network of community-serving organizations working to positively impact the health and well-being of the communities in the Jefferson service area.

With more than 120 partners, the Collaborative is committed to:

- Highlighting community strengths
- Working with partners to elevate resident voices
- Providing resources and training for Collaborative partners
- Working together on key challenges within the Jefferson service area



*Jefferson Community Collaborative Meeting, September 2023*



## Meetings Across the Jefferson Service Area

For the Collaborative's quarterly meetings, the Foundation is intentional about choosing locations throughout the Jefferson service area and highlighting the amenities within the Mon Valley and South Hills.

These meetings serve as an incubator for community building, a tool for improving the capacity of community-serving organizations, and as a way to facilitate collective action.

Meeting topics ranged from the nonprofit staffing shortage to facilitated table discussions around community strengths and needs.

## Collaborative Celebration

In honor of the Foundation's yearlong 10th anniversary celebration, a [special Collaborative meeting](#) was held on Wednesday, September 27 at the Crowne Plaza Pittsburgh South in Bethel Park, to acknowledge the work that nonprofit partners do within the community.

Nearly 150 individuals from over 70 organizations came to celebrate. In addition to an all-star slate of presenters, the celebration featured informal networking, a 360° camera, individual and organizational prizes, and a collaborative art project. The event culminated in a spoken word piece [Fingerprints – A Legacy of Impact](#) by Dr. Jonathan White.

## Nonprofits Leading Action

Collaborative partners participate in action teams that meet throughout the year to tackle specific challenges within the broader work of the Collaborative. These include:

- **Diversity, Equity, Inclusion and Racial Justice Action Team:** The team works to strengthen community engagement, equity, and inclusion via technical assistance to Collaborative partners. It advocates for professional development opportunities, and spearheads activities to improve service delivery and ensure equity in decision making.
- **Civic and Policy Engagement Action Team:** Advocacy creates positive change that impacts the communities in the Jefferson service area. This team provides Collaborative partners with nonpartisan resources on how to be their own best advocates. It also works to educate elected officials on the value of work being done by community-serving organizations in their area.



*Jefferson Community Collaborative Meeting, September 2023*



## Jefferson Votes Initiative

Few rights are more important to American citizens than the right to vote. [Jefferson Votes](#) – a nonpartisan initiative – was created by the Jefferson Collaborative to inspire and assist community members to engage in the electoral process by:

- Strengthening Collaborative organizations to increase voter registration and participation
- Ensuring voters are comfortable and well-informed about the voting process
- Promoting interest and enthusiasm for civic engagement

The initiative encouraged Collaborative partners to become designated Voter Engagement Champions within their respective communities. The Jefferson Votes page on the Collaborative website offers a wealth of resources, training workshops, and learning opportunities.



### Outcomes

In the 2022 election cycle, Jefferson Votes' work resulted in:

- 47 organizations registering as Voter Engagement Champions
- 17 organizations working with voters in the focus communities of Duquesne, Clairton, McKeesport, and Homestead
- 13 mini-grants totaling \$13,000 awarded to participating organizations
- 4 Lunch and Learn Workshops to educate Collaborative partners around civic engagement

## Jefferson Community Directory

Know a senior citizen who could use help finding a place to live, or help with their taxes? Looking for after-school programs for preteens? Have a neighbor who needs a job but doesn't know where to begin?

The [Jefferson Community Directory](#) is a user-friendly digital platform, completely redesigned in 2023, making it easier than ever for residents, stakeholders, and nonprofit partners to connect with a wide range of local organizations and services.

Now in its fourth iteration, the Community Directory has a fully accessible platform that is searchable by category of services; by school and school districts; and by community, township and municipality offices in the South Hills and the Mon Valley.



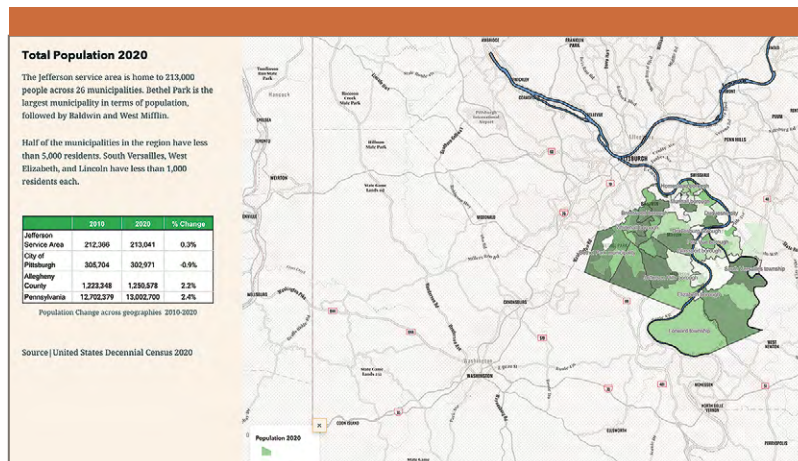
# COMMUNITY-DRIVEN RESEARCH

## Our Changing Communities

One of the Jefferson Regional Foundation's core objectives is driving community research and data that reflect the lived experiences of residents, and which can then inform decision making. That's where [Our Changing Communities](#) comes in.

Driven by recommendations from a council of nonprofit partners and stakeholders, the Jefferson Regional Foundation launched Our Changing Communities: A Review of Data Trends in the Jefferson Regional Service Area in 2022. The initiative is a partnership with Fourth Economy Consulting and the University of Pittsburgh Center for Social & Urban Research, and the Western Pennsylvania Regional Data Center.

The project focuses on changing demographics, economic mobility, and community health. It includes the release of **data story maps** and **one-page community snapshots** for each community and school district in the Foundation's service area.

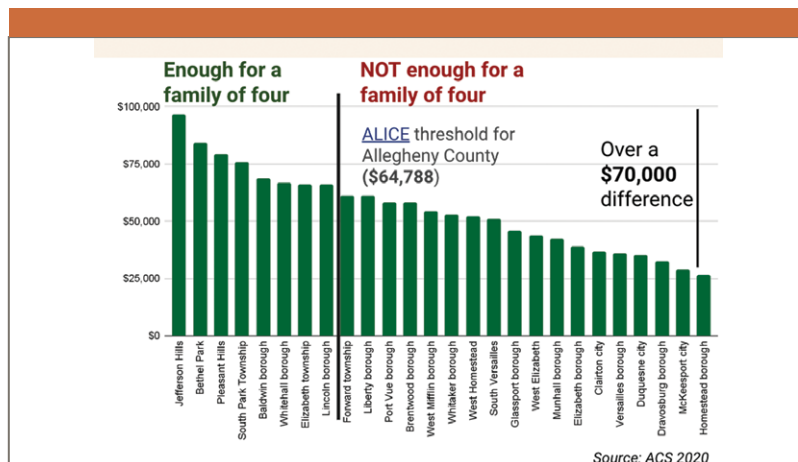


### Data Story Maps

The data story maps tell a narrative about the changes happening within our local communities, using an interactive web application in which text is layered with online maps. These maps are a critical tool for residents, foundations, county planners, and service-based nonprofit organizations.

Story maps include demographic data on the [growth of diverse populations; economic disparities, mobility, and homeownership](#); and a picture of [environmental and community health](#). Together, they highlight the intersectionality of factors like age, race, and geography across communities.

The maps also inform the Foundation's own work: the data is used to complement community engagement efforts and support planning and strategy for the Community Voice Fund.





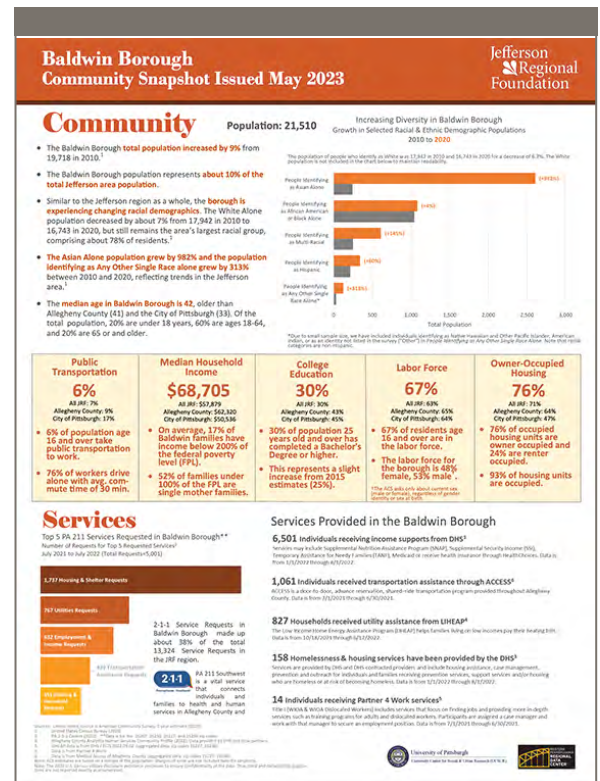
## Community Snapshots

Where you live matters – particularly when it comes to the social determinants of health. The Jefferson Area [Community Snapshots](#) give a larger picture on population demographics, such as household income, poverty level, and access to internet, transportation, and health insurance.

These Snapshots analyze data by municipalities and school districts in the region. For example, readers can find information on racial diversity of Baldwin Borough, median age in Dravosburg, owner-occupied housing in Elizabeth Borough, or the services provided by school districts in the Foundation's service area.

Additional highlights include findings such as:

- Diverse populations are growing in the area, including a 265% increase in the population identifying as Asian between 2010 and 2020.
- Large income disparities exist across the region: a middle earner in Homestead earns about \$70,000 less than a middle earner in Jefferson Hills.
- The Jefferson Regional service area has unique health and environmental challenges, including high rates of mental distress and poor air quality.



## Technical Assistance for Nonprofit Partners Using Community Data

There is a tremendous amount of data in the story maps and community snapshots. Because of this, Stephen Ankney, the Foundation's Grants, Evaluation and Data Manager, led three online training classes in 2023 for employees representing 36 of the Foundation's nonprofit partners.

The classes demonstrated features such as accessing pop out menus, viewing specific census tracks, switching between 2010 and 2020 data, and more.

Any community member needing technical assistance with using the story maps can view this presentation on the Foundation's website via the [Our Changing Communities](#) page.

### What Are Data Story Maps?

Data story maps combine visuals like maps and charts with written narrative to a story about a particular subject.

There are three data story maps, one for each of the focus areas of this project:

Demographics

Economic Mobility

Community Health

There's a lot of data available for you to dig into on each map.

## IN FOCUS:

### Duquesne University Center for Integrated Health Asthma Project

The statistics are alarming: more than 20% of children in some Mon Valley school districts have asthma, compared to about 10% statewide.

Those are the findings of the [Duquesne University Center for Integrative Health \(DUCIH\)](#), a Jefferson Regional Foundation grantee since 2015. DUCIH is a key partner in the Foundation's Health and Wellness and Early Childhood/Youth Development priorities, and has conducted analyses over the past two decades to monitor asthma in our region.

DUCIH further estimates that 10 to 15% of children and adults living here have not been diagnosed. And 35% of those who have been diagnosed do not have their asthma under control. Untreated asthma can lead to reduced learning capabilities and significantly impact youth development.

DUCIH was awarded a JRF grant to support its "Bridges to Health" (B2H) program in December 2022. The grant expands their work in school-based asthma clinics, where they screen more than 2,200 school children in Clairton, South Allegheny, and Homestead communities. They have also screened more than 400 adults for asthma and chronic health issues since the Foundation began its support of the B2H program.



**In the words of DUCIH Director Jennifer Elliot, "[We] really meet residents where they are, so that everybody has an equitable chance to be healthy."**





## IN FOCUS: Mon Valley Initiative

**Mon Valley communities are close-knit, and have developed strong social and communal networks. Yet families continue to struggle financially.**

The one-two punch of losing the region's large manufacturing base, plus the unexpected challenges of the Covid pandemic, created even greater need for residents served by the [Mon Valley Initiative \(MVI\)](#).

But with MVI's help, signs of growth — and hope — are emerging.

MVI works one-on-one with individuals to overcome barriers to financial stability. They served 398 Jefferson area residents from January through December 2022.

MVI's work includes "searching for sustainable career track employment, financial coaching that focuses on personal financial management, and benefits screening that offers security such as food stamps or Medical Assistance," explained Dr. Charles Howell, MVI's Director of Workforce Development and Financial Coaching.

121 Jefferson area residents increased their incomes due to securing employment and/or more skilled financial management via MVI's Workforce and Financial Coaching. In total, 139 unique employers hired MVI

participants, including companies from the manufacturing, hospitality, and healthcare industries. Average starting wages were \$15/hour.

**MVI is building on the skills and strengths that Mon Valley residents possess and is co-building a brighter future for the region in the process.**





## IN FOCUS:

### Melting Pot Ministries

It was the tipping point for a crisis in their schools and neighborhoods — and a catalyst that called residents to action.

**Melting Pot Ministries (MPM)** was founded in 2005 as a response to five area African American boys dropping out of one high school on the same day. Five churches in the lower South Hills became formally unified — “melted” into one — because church members, families and youth advocates saw a steadily rising tide of unmet community needs. Melting Pot Ministries looks to meet those needs, focusing on the educational, health, and wellbeing of young people in their community.



Today, 93% of participants in MPM's activities graduate from high school and go on to seek some form of higher education.

MPM is a Black-led organization which primarily serves children of color and offers role modeling using a racially affirming approach. It operates in Baldwin-Whitehall, South Park, and Bethel Park.

MPM has been a grantee of the Foundation since 2015 and a key partner in work related to the Foundation's priority area of Early Childhood and Youth Development. It provides on-site after-school programs, summer camps, one-on-one academic coaching, tutoring, and mentoring, workshops, events, and retreats for families.



Academic excellence is an important goal, but MPM also champions the development of the whole person, says Executive Director Diane Ford. “We try and help them become the best they can be,” she explains. “And I’m very serious when we talk about being a loving atmosphere. Melting Pot is where love touches hearts and transforms lives. We see it happening every day.”

**The results are remarkable: one hundred percent of those attending the after school program raised their reading and math skills by at least one letter grade and advanced to the next grade level.**





## TIME AHEAD: WHAT COMES NEXT

As the Jefferson Regional Foundation looks towards the future, our team is already hard at work creating the framework for the Foundation's *next* 10 years — and beyond.

### > Communications Plan

Over the course of the spring and summer of 2023, the Foundation worked with a consulting firm to systematically review, assess, and update how it communicates with the communities and partners it serves.

The result was a new Communications Plan, with key recommendations presented at the Foundation's board retreat in September, that refined the vision, mission, and principles — while also updating messaging to key stakeholders.

### > Refreshing Our Digital Presence and Brand

The Communications plan laid the groundwork and provided key recommendations for the next step: a systematic update of the Foundation's website, social media presence, and brand design elements.

In 2024, the Foundation will be rolling out its new look and digital presence — all to better reflect the work we do as conveners, partners, and capacity-builders for the communities we serve.

### > Strategic Plan

In 2024, the Foundation's board and staff will complete a strategic plan to direct its work over the next few years, as it works to implement a vision of people and families thriving by building on community strengths.

The strategic planning process will reflect input from residents and service providers throughout the communities served by Jefferson Hospital. A central theme will be approaching work through an equity lens and an intentional purpose of inclusivity.

The new strategic plan will impact all aspects of operational practices. The overarching goal? Addressing the social determinants of health to improve the communities' health and well-being.



# Fast Facts

## OUR BOARD

### **Richard W. Talarico, Board Chair**

Partner, The Hawthorne Group

### **Aaron B. Bilger**

Vice President, Corporate Communications,  
Highmark Health

### **Kenya Boswell**

Senior Vice President, Community Affairs,  
Highmark Health

### **Dr. Richard F. Collins**

Retired, Chief Medical Officer, AHN Jefferson  
Hospital

### **Jo DeBolt**

Partner Emeritus, La Piana Consulting

### **John J. Dempster**

Former President and Chief Executive Officer,  
AHN Jefferson Hospital

### **Dr. James Doyle**

Program Officer, The Grable Foundation

### **Gary Evans, Vice Chair**

Retired, Chief Transformation Officer, Microbac  
Laboratories

### **Dr. Tiffany Evans**

Dean of Students, CCAC South Campus

### **Helen Fallon**

Emeritus Professor of Journalism, Point Park  
University

### **Dr. Mark P. Gannon**

Surgeon, Jefferson Hospital/AHN

### **Caitlin Green**

Senior Vice President, Head of Marketing and  
Corporate Communications, ServiceLink

### **Gregory A. Harbaugh**

Of Counsel, Houston Harbaugh, PC

### **Erin Ickes**

Senior Director of Legal, American Textile  
Company

### **Thomas Kavanaugh**

Senior Vice President and Deputy General Counsel,  
Highmark Health

### **Edward R. Marasco, Secretary**

Vice President, Business Development,  
Quick Med Claims

### **Dr. Manzoor Mohideen**

Director of Clinical Operations, Academic Research  
Center for Hematology, University of Pittsburgh

### **Samantha Strahota Paolo**

Director of Development, Family House

### **Daniel Onorato**

Executive Vice President, Chief Corporate Affairs  
Officer, Highmark Health

### **Frances Smith-Rohrich**

Senior Vice President, Learning Director of  
Leadership Development Program, PNC Bank

### **Virginia Weida, Treasurer**

President, Virginia Weida Designs LLC



## OUR STAFF

### Dr. Trisha Gadson

Chief Executive Officer

### Kelleigh Boland

Director of Grantmaking and Strategy

### Daniel Vereb

Community Engagement Manager

### Stephen Ankney

Grants, Evaluation and Data Manager

### Tyler Wheeler

Office Manager

**“The First and most important choice a leader makes is the choice to serve, without which one’s capacity to lead is severely limited.”**

– Robert Greenleaf



## OUR NEW OFFICE & MEETING SPACE

After calling the Jefferson Hospital campus home since its current inception, in Spring 2022 the Jefferson Regional Foundation moved to a new space in Whitehall Towers, a four story building on the border of Baldwin and Whitehall, near the intersection of Streets Run Rd and Rt. 51.

Since then, our team has been enjoying the expanded space and appreciating the new opportunities it provides to fulfill our mission and continue serving the Jefferson area.



# Jefferson Regional Foundation Grants for 2022-2023

## Allegheny Health Network

\$45,000

*CHILL Project in Clairton*

### Community-Based Youth Behavioral Health

Improve long-term and sustainable behavioral health outcomes of Clairton School District students and educators by supporting the third year of a collaborative model/pilot with AHN and Awaken Pittsburgh.

## American National Red Cross

\$25,000

### Home Fire Relief

Increase health, well-being, and home safety by providing direct assistance, fire safety and preparedness education, and smoke alarms to Jefferson individuals/families to reduce injury and death from fires through partnerships with local fire departments.

## Anna Middleton Waite Learning Center

\$30,000

### Providing Digital Equity for Older Adults

Provide older adults the necessary tools to engage in the digital world by providing personal computers, wi-fi access, technical support, and training.

## Ansar of Pittsburgh

\$25,000

### Mental Health and Wellness Initiative

Support the mental health and wellness of refugees living in Duquesne through increased access to resources to foster good mental health practices and self-expression.

## Beverly's Birthdays

\$50,000

### Championing Social/Emotional Youth Development

Provide support and opportunity to Jefferson women and parents/caregivers experiencing financial hardship during pregnancy and through the early years of a child's life by offering group birthday parties, community baby showers, providing tangible items of support (baby/birthday supplies and clothing), and providing access to the newly formed Greater Pittsburgh Infant Formula Bank.





<b>Black Women's Policy Center, Inc.</b>	<b>\$150,000</b>
--	------------------

#### **Building Civic Engagement Power for Black Women**

Improve the health and wellness of Black women living in McKeesport, Duquesne, Clairton, West Mifflin, and Homestead, and share their lived experience by offering support and coaching through system navigation, connection to resources, advocacy on shaping public policy, and training and education.

<b>Black Women's Policy Center, Inc.</b>	<b>\$10,000</b>
--	-----------------

#### **Supporting Capacity for Community Engagement**

Secure a new location for the Black Women's Policy Center to continue its community development work.

<b>Borough of Baldwin (Borough of Baldwin Police Department)</b>	<b>\$100,000</b>
--	------------------

#### **Increased Response to Sudden Cardiac Arrest**

Increase the opportunity to save Jefferson residents' lives from sudden cardiac arrest through the purchase of 44 automated external defibrillators (AED) to be installed in police patrol vehicles serving Baldwin Borough, Pleasant Hills Borough, and West Mifflin Borough.

<b>Citizen Science Lab</b>	<b>\$34,000</b>
----------------------------	-----------------

#### **STEM Programming for Jefferson Young People**

Increase the number of students of color interested in Science, Technology Engineering and Math (STEM) by providing 10 interactive STEM workshops for 100 young people participating in out-of-school time programs at Dragon's Den, SHIM, and YouthPlaces.

<b>Dragon's Den</b>	<b>\$120,000</b>
---------------------	------------------

#### **Out of-School Time Youth Programming**

Build self-confidence, trust, and sociability of Jefferson school-age youth and develop deeper community engagement in Homestead by offering after school programs, summer camps, and introducing community workshops/events using the challenge course and zipline in the historic St. Mary Magdalene church.



<b>Duquesne University</b>	<b>\$60,000</b>
<b>Bridges to Health for the Mon Valley</b>	
Increase overall health and wellness for Mon Valley residents by working to address health disparities and community identified health priorities, with a focus on asthma, cardiovascular disease, diabetes, mental health, and social determinants of health.	
<b>Filipino American Association of Pittsburgh</b>	<b>\$30,000</b>
<b>Capacity Building for Expansion of Programming</b>	
Provide capacity-building support through an organizational assessment in partnership with a consultant and assist the FAAP in expanding services and increasing health and well-being in the local Filipino community.	
<b>Footbridge for Families, Inc</b>	<b>\$60,000</b>
<b>Rapid Response Funding to Support Jefferson Families</b>	
Assist 15-30 Jefferson residents during times of short-term financial crisis and provide connections to additional supports through an innovative technology platform which facilitates rapid financial response to vendors.	
<b>Footbridge for Families, Inc</b>	<b>\$65,000</b>
<b>Technology Capacity-Building</b>	
Provide operational assistance because of accelerated growth of this nonprofit due to continuous support offered to families in low socioeconomic communities. Operational assistance is needed in building the technology capacity to serve Jefferson residents. Updating the technology platform which facilitates rapid financial response to vendors on behalf of families is critical to the support of families.	
<b>McKees Point Development Group (McKeesport NAACP)</b>	<b>\$75,000</b>
<b>Addressing Community Violence</b>	
Decrease community violence in McKeesport by supporting convenings and community building events to engage residents in anti-violence educational programming, facilitated community improvement discussions and community led youth programming.	





<b>Melanin Mommies Pittsburgh</b>	<b>\$40,000</b>
<b>H.E.A.L. Together, Mental Health Circle for Black Women and Mothers</b>	
Assist 50 Black mothers and women living in the Mon Valley communities of McKeesport, Duquesne, and Homestead who have experienced the impacts of gun violence in their healing journey by providing free, accessible, and stigma-free therapy and grief counseling.	
<b>Melting Pot Ministries</b>	<b>\$150,000</b>
<b>Youth and Family Support</b>	
Positive development for youth and their caregivers in South Park, Baldwin-Whitehall, and Bethel Park by providing afterschool and summer programming focused on educational, social-emotional, and cultural life challenges.	
<b>Operation Troop Appreciation</b>	<b>\$60,000</b>
<b>Capacity-Building for New Space</b>	
Provide capacity-building support for costs associated with a transition to a new building to increase the health and well-being of the veteran community living at or below the poverty line.	
<b>PA CleanWays of Allegheny County, Inc. d.b.a Allegheny CleanWays</b>	<b>\$30,000</b>
<b>Eliminating Illegal Trash Dumping to Increase Public Health</b>	
Engage and empower residents of McKeesport to eliminate illegal dumping by participating in community cleaning of illegal dumpsites and assess illegal dumping for Clairton, West Mifflin, and Elizabeth Township, and Forward Township.	
<b>Southwestern PA Partnership for Aging</b>	<b>\$250,000 (\$125,000/over two years)</b>
<b>Age Friendly Greater Pittsburgh</b>	
Improve health and well-being for Jefferson older adults by increasing access to resources in neighborhoods, strengthening intergenerational connections to reduce isolation and loneliness, and championing new ideas through a collaborative effort.	



<b>Storehouse for Teachers d.b.a The Education Partnership</b>	<b>\$70,000</b>
--	-----------------

#### **Providing Essential School Supplies to Promote Learning**

Improve the long-term overall health and well-being and educational outcomes of students attending Clairton Middle/High School, Duquesne Elementary School, Founders' Hall Middle School (McKeesport), and Twin Rivers Elementary School (McKeesport) by providing each student with individual school supplies and providing teachers access to the teacher resource center for supplies and equipment.

<b>The Blessing Board</b>	<b>\$75,000</b>
---------------------------	-----------------

#### **South Showroom: West Mifflin Location**

Increase the quality of life and overall health and wellness for families and individuals experiencing low-income status living in the Jefferson Regional service area by supporting the operations and sustainability of a furniture/durable medical equipment bank in West Mifflin.

<b>The Mon Valley Initiative</b>	<b>\$175,000</b>
----------------------------------	------------------

#### **Operating Support to Address Social Determinants of Health**

Provide general operational support to strengthen MVI's ability to offer healthy opportunities and address the social determinants of health for Mon Valley residents which include services related to housing, education, financial literacy, and workforce development.

<b>The Mon Valley Initiative</b>	<b>\$175,000</b>
----------------------------------	------------------

#### **Workforce Development and Financial Coaching**

Assist unemployed and under-employed Jefferson residents in achieving their goals of financial self-sufficiency through offering a comprehensive workforce development program.

<b>United Way of Southwestern Pennsylvania</b>	<b>\$85,000</b>
--	-----------------

#### **Welcome Back Summer 2023**

Provide in-person summer programming with hands-on and social and emotional learning opportunities for youth in kindergarten through high school by managing and implementing a collaborative funding model.





<b>Venture Outdoors</b>	<b>\$50,000</b>
-------------------------	-----------------

### Outdoors for All

Continue to engage Jefferson youth, mentors, and volunteers in outdoor activity through targeted programming promoting health and wellness and offer teens a mentorship/ internship program to explore outdoor careers.

<b>Ventures in People</b>	<b>\$45,000</b>
---------------------------	-----------------

### Capital Improvement for Early Literacy and Capacity-Building

Provide capital support for costs associated with a new roof to ensure the health and well-being of 30 children and families attending Early Head Start programming and enable future community offerings.

<b>Women for a Healthy Environment</b>	<b>\$125,000</b>
--	------------------

### Strengthening and Sustaining Healthy Spaces

Increase awareness of environmental health factors for employees and families in 20 early childcare centers and conduct 40 home assessments for Jefferson residents/families by providing technical assistance on an Eco-Healthy Checklist and offering low-cost, sustainable solutions that will improve health outcomes for Jefferson families/children.

<b>Young People in Recovery</b>	<b>\$42,000</b>
---------------------------------	-----------------

### Building Safe Recovery Networks for Young People

Improve access to a peer-recovery network, treatment, education, housing, and employment for Jefferson young people in substance abuse recovery through launching a peer-led chapter to conduct pro-social activities, all-recovery meetings, and life skill workshops in the Jefferson area.

<b>Youth Opportunities Development</b>	<b>\$45,000</b>
--	-----------------

### Capacity-Building for New Space

Provide capacity-building support for costs associated with a transition to new space to provide out-of-school time programming for Clairton youth in partnership with Clairton City School District.



## Additional Investments via the Community Voice Fund

<b>Allegheny Intermediate Unit</b>	<b>\$30,000</b>
Utilize a Parent Advisory Council to agenda set and hold four convenings with families of young children from Homestead, West Homestead, and Duquesne.	
<b>Bhutanese Community Association of Pittsburgh</b>	<b>\$22,000</b>
Hold five to six convenings of 15-20 participants targeting residents from Bethel Park, South Park, Pleasant Hills, Jefferson Hills, Brentwood, Baldwin, Whitehall, and West Mifflin at BCAP offices or local sites utilizing partner connections and robocall services to enlist participants.	
<b>Black Women's Policy Center</b>	<b>\$35,000</b>
Hold a total of nine convenings with Black women from Clairton, McKeesport, and Duquesne through creation of an 810-women leadership council.	
<b>Clairton Unity Group (Adult Focus)</b>	<b>\$19,000</b>
Hold a convening for 45 people from Clairton on the Gateway Clipper focused on the social determinants of health.	
<b>Clairton Unity Group (Youth Focus)</b>	<b>\$29,000</b>
Hold two separate convenings: one for 7th and 8th grade students and one for 9th-11th grade students from Clairton focused on community needs and community violence.	





## Additional Investments via the Community Voice Fund, contd.

<b>Filipino American Association of Pittsburgh</b>	<b>\$16,000</b>
Hold a total of five convenings reaching an estimated 100 Filipino women and mothers from Bethel Park, Homestead, McKeesport, South Park, and West Mifflin.	
<b>Heuer House</b>	<b>\$30,000</b>
Hold six roundtable conversations with 10 residents from Glassport and McKeesport at Heuer House.	
<b>Latino Community Center</b>	<b>\$28,000</b>
Hold four convenings with Latinx families from McKeesport to discuss hopes, dreams, and needs of the community.	
<b>Melting Pot Ministries</b>	<b>\$35,000</b>
Hold four convenings at local sites with residents from Baldwin, Whitehall, Bethel Park, and South Park with meals provided and an opportunity for audience members to set the agenda.	
<b>New Evangelistic Ministry</b>	<b>\$6,000</b>
One convening of 25 Duquesne residents aged 18-65 centered around health and well-being.	
<b>Special Olympics Pennsylvania, Three Rivers Region</b>	<b>\$18,000</b>
Hold four convenings totaling 50-75 residents from Jefferson Hills, Brentwood, McKeesport, Elizabeth Township, and Homestead focused on the needs of people with disabilities.	



## Additional Investments via the Community Voice Fund, contd.

<b>Steel Rivers Council of Governments (Elizabeth's Guardian Angels)</b>	<b>\$10,000</b>
Hold two separate convenings with senior citizens, business owners, clergy, and community officials to discuss community needs in the Elizabeth area.	
<b>Student Athletes Taking Action to Universally Succeed</b>	<b>\$8,000</b>
Hold one convening of student-athletes attending McKeesport School District to be held at the AIU in Homestead.	
<b>Veterans Breakfast Club</b>	<b>\$26,000</b>
Hold ten convenings, two per each Community Voice Fund geographic focus area, with upwards of 250 local veterans spread between day and night to discuss veterans' needs.	
<b>When She Thrives</b>	<b>\$32,000</b>
Hold eight weekly sessions with single mothers from West Mifflin and the Mon View Heights public housing community centered around the areas highlighted in the 2019 Pittsburgh Gender Equity Report.	
<b>Xposure Mentoring Program</b>	<b>\$6,000</b>
Hold a weekend retreat to discuss Duquesne community and youth needs at Camp Allegheny.	









Jefferson Regional Foundation  
Whitehall Towers Suite 301  
470 Streets Run Road  
Pittsburgh, PA 15236  
412-990-7111  
[jeffersonrf.org](http://jeffersonrf.org)